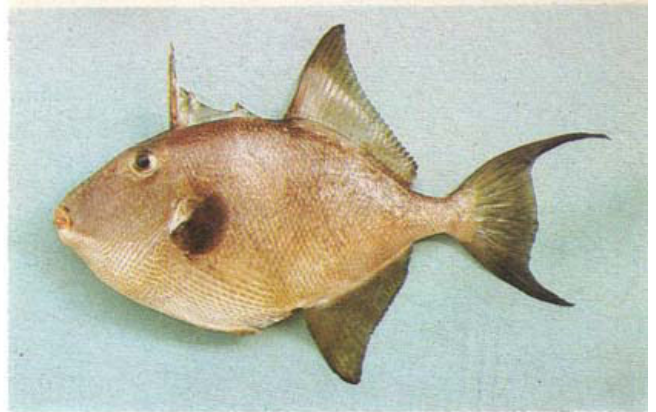


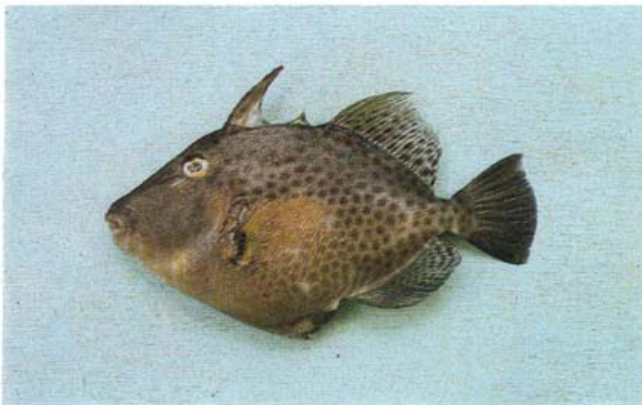
PLATE I



(1) ACANTHURIDAE: *Acanthurus monroviae* 230 mm SL
(Ph.: Bianchi)



(2) BALISTIDAE: *Balistes capricus*
(Ph.: Bellemans)



(3) BALISTIDAE: *Balistes punctatus*
(Ph.: Bellemans)



(4) BOTHIDAE: *Bothus podas africanus*
(Ph.: Bellemans)



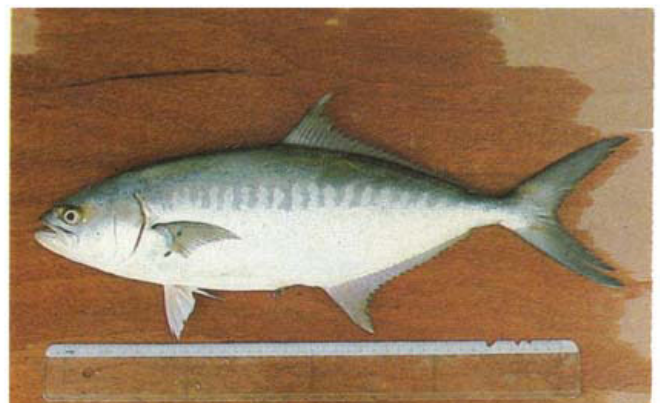
(5) BRANCHIOSTEGIDAE: *Branchiostegus semifasciatus*
(Ph.: Bellemans)



(6) CARANGIDAE: *Alectis alexandrinus* (juvenile)
230 mm SL (Ph.: Bianchi)

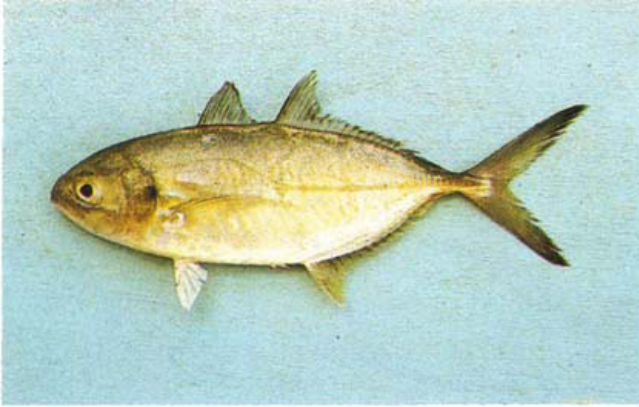


(7) CARANGIDAE: *Alectis alexandrinus* (adult)
(Ph.: Bellemans)



(8) CARANGIDAE: *Campogramma glaycos*
(Ph.: Bellemans)

PLATE II



(9) CARANGIDAE: *Caranx crysos*
(Ph.: Bellemans)



(10) CARANGIDAE: *Caranx hippos*
(Ph.: Bianchi)



(11) CARANGIDAE: *Caranx senegallus*
(Ph.: Bellemans)



(12) CARANGIDAE: *Decapterus punctatus* 125 mm SL
(Ph.: Bianchi)



(13) CARANGIDAE: *Decapterus rhonchus* 305 mm SL
(Ph.: Bianchi)



(14) CARANGIDAE: *Lichia amia*
(Ph.: Bellemans)

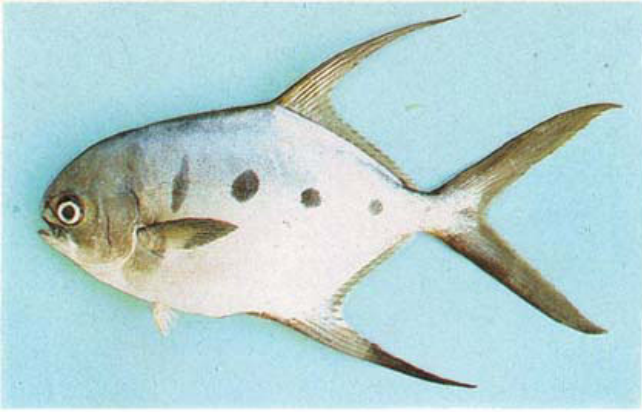


(15) CARANGIDAE: *Selene dorsalis* 160 mm SL
(Ph.: Bianchi)

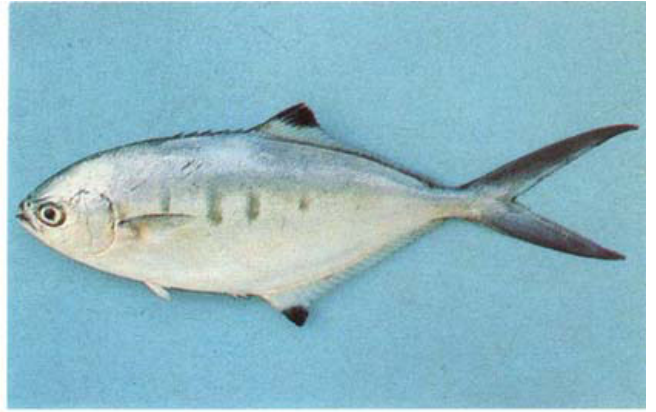


(16) CARANGIDAE: *Seriola carpenteri* 325 mm SL
(Ph.: Bianchi)

PLATE III



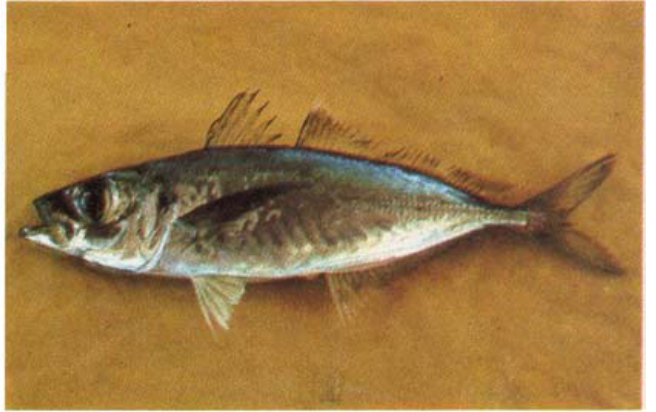
(17) CARANGIDAE: *Trachinotus goreensis*
(Ph.: Bellemans)



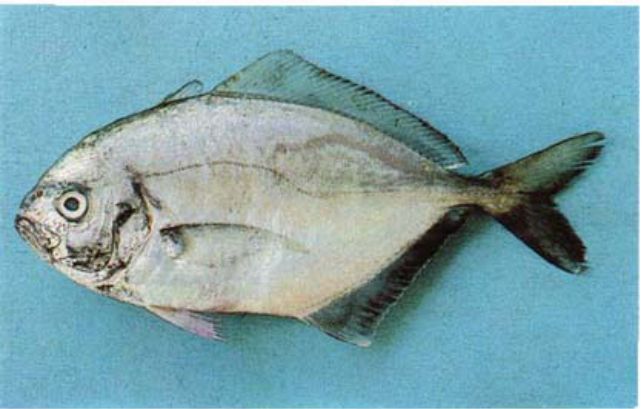
(18) CARANGIDAE: *Trachinotus ovatus*
(Ph.: Bellemans)



(19) CARANGIDAE: *Trachinotus teraia* 300 mm SL
(Ph: Bianchi)



(20) CARANGIDAE *Trachurus trecae* 150 mm SL
(Ph : Bianchi)



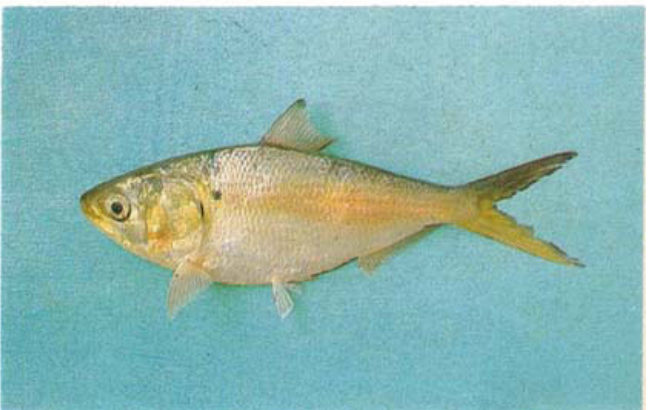
(21) CARANGIDAE: *Uraspis helvola*
(Ph.: Bellemans)



(22) CENTRACANTHIDAE: *Spicara alta* 210 mm SL
(Ph.: Bianchi)



(23) CENTRACANTHIDAE: *Spicara alta* (protracted mouth)
(Ph.: Bellemans)

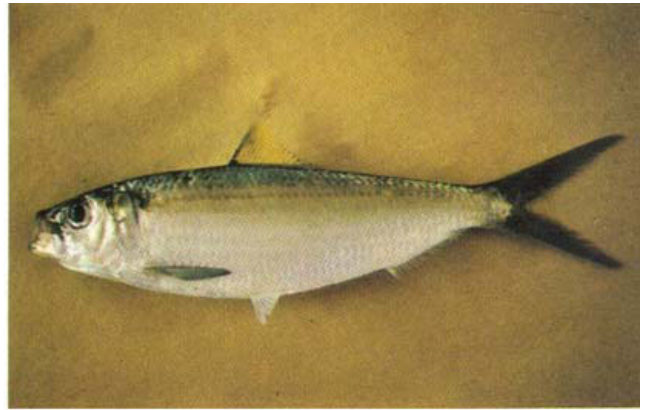


(24) CLUPEIDAE: *Ethmalosa fimbriata*
(Ph.: Bellemans)

PLATE IV



(25) CLUPEIDAE: *Sardinella aurita* 125 mm SL
(Ph.: Bianchi)



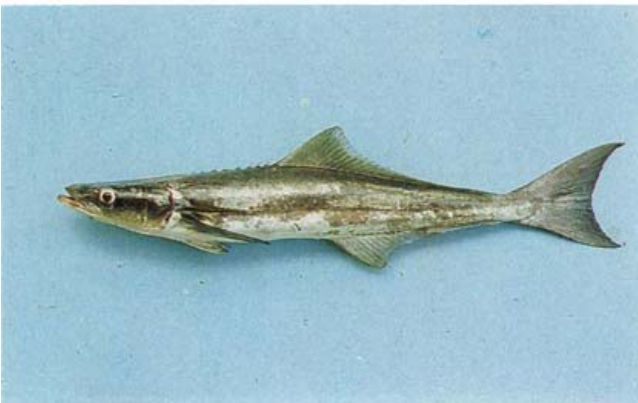
(26) CLUPEIDAE: *Sardinella maderensis* 190 mm SL
(Ph.: Bianchi)



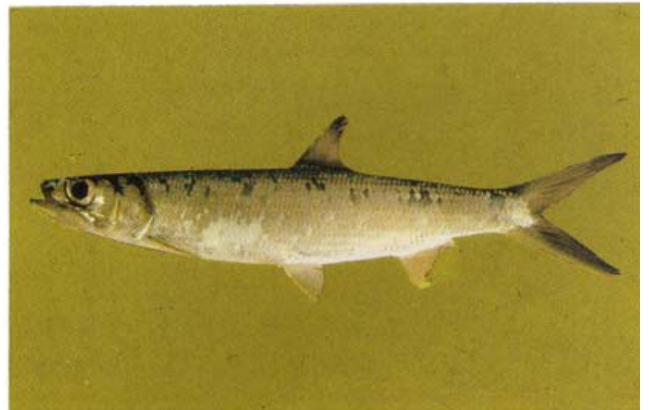
(27) CYNOGLOSSIDAE: *Cynoglossus monodi*
(Ph.: Bellemans)



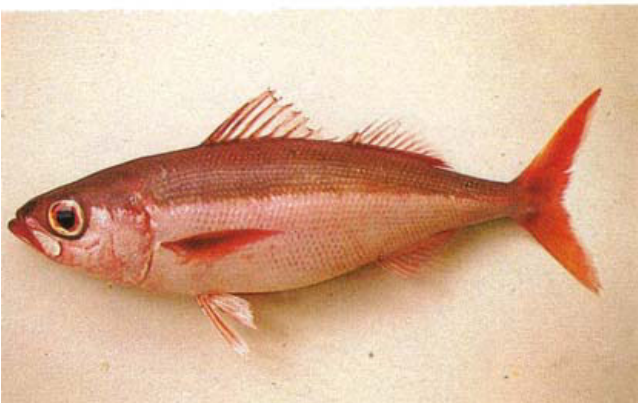
(28) DREPANIDAE: *Drepane africana*
(Ph.: W. Schneider)



(29) ECHENEIDAE: *Echeneis naucrates*
(Ph.: Bellemans)



(30) ELOPIDAE: *Elops lacerta* 300 mm SL
(Ph.: Bianchi)



(31) EMMELICHTHYIDAE: *Erythrocles monodi*
(Ph.: Bellemans)



(32) EPHIPPIDAE: *Chaetodipterus goreensis* 120 mm SL
(Ph.: Bianchi)