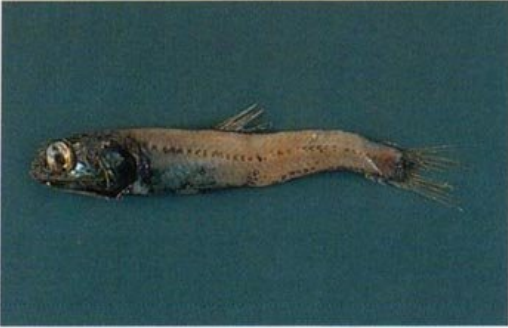
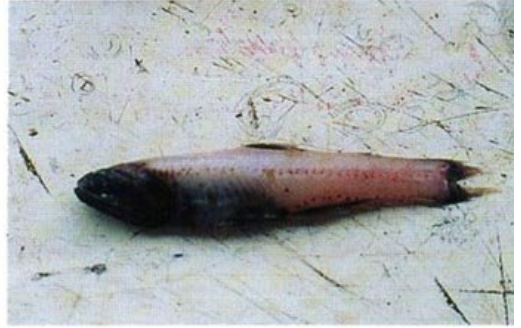


## PLANCHE XVII



106. MYCTOPHIDAE: *Ceratoscopelus maderensis*  
(photo: J. Biosca)



107. MYCTOPHIDAE: *Lampanyctus crocodilus*  
(photo: D. Lloris)



108. OPHICHTHIDAE: *Echelus myrus*  
(photo: J. Biosca)



109. OPHICHTHIDAE: *Ophichthus rufus*  
(photo: J. Biosca)



110. OPHIDIIDAE: *Ophidion barbatum*  
(photo: J. Biosca)



111. PHYCIDAE: *Phycis phycis*  
(photo: J. Biosca)



112. POMATOMIDAE: *pomatomus salatrix*  
(photo: M. Bellemans)

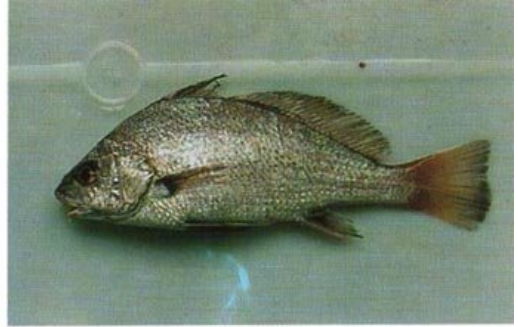


113. SCARIDAE: *Sprarisoma cretense*  
(photo: T. Moreno)

PLANCHE XVIII



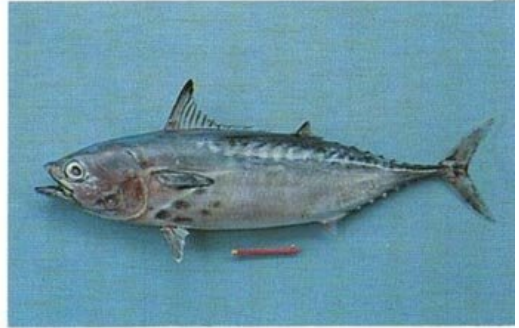
114. SCIAENIDAE: *Umbrina canariensis*  
(photo: M. Bianchi)



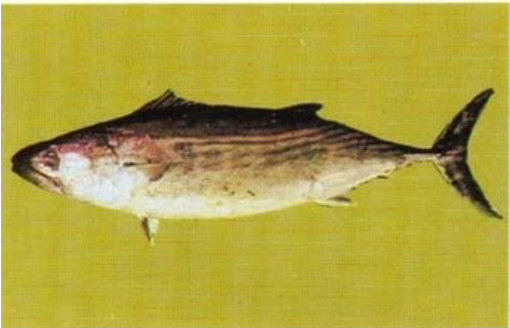
115. SCIAENIDAE: *Umbrina ronchus*  
(photo: D. Lloris)



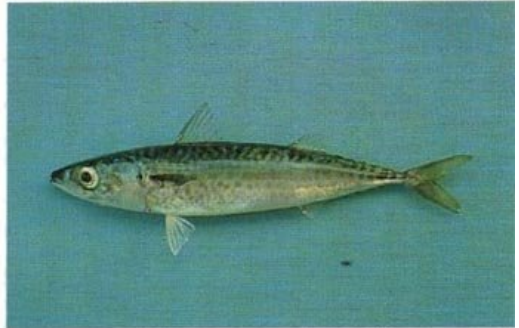
116. SCOMBRIDAE: *Auxis thazard*  
(photo: J. E. Randall)



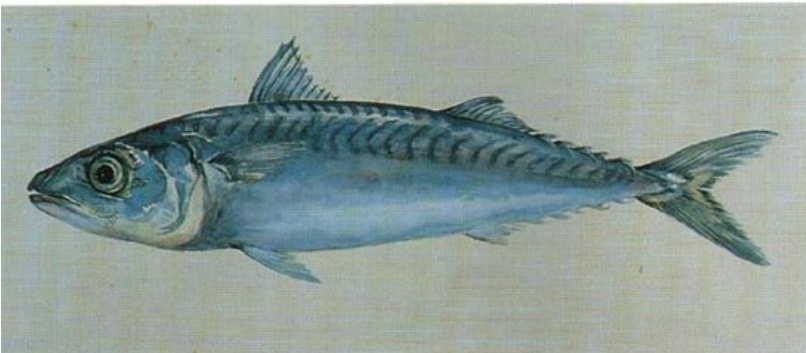
117. SCOMBRIDAE: *Euthynnus alletteratus*  
(photo: M. Bellemans)



118. SCOMBRIDAE: *Sarda sarda*  
(photo: G. Bianchi)



119. SCOMBRIDAE: *Scomber japonicus*  
(photo: M. Bellemans)



120. SCOMBRIDAE:  
*Scomber scombrus*  
(dessin: G. Davit)

PLANCHE XIX



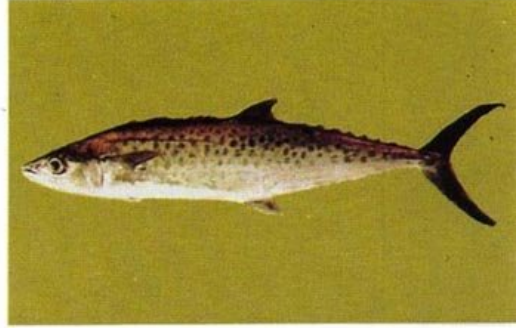
121. SCOMBRIDAE: *Scomber scombrus*  
(photo: D. Lloris)



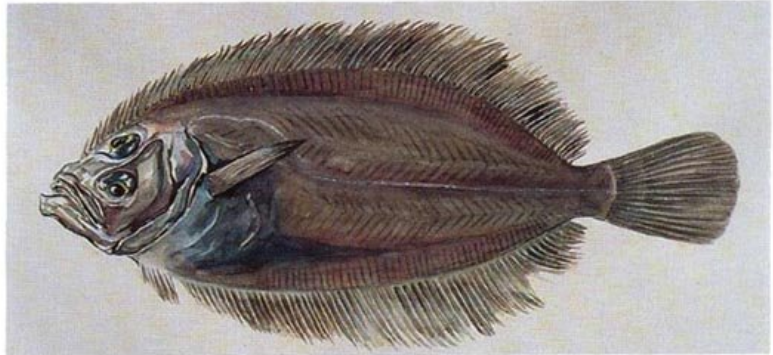
122. SCOMBRIDAE: *Thunnus alalunga*  
(photo: D. Lloris)



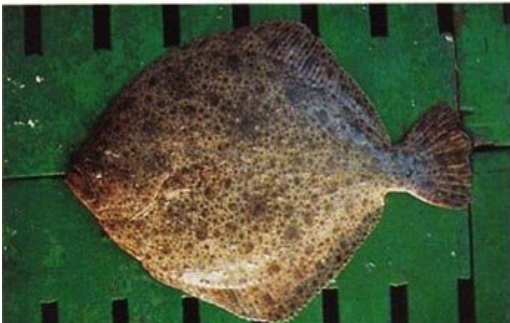
123. SCOMBRIDAE: *Thunnus thynnus thynnus*  
(photo: J. L. Cort)



124. SCOMBRIDAE: *Scomberomorus tritor*  
(photo: G. Bianchi)



125. SCOPHTHALMIDAE: *Lepidorhombus boscii*  
(dessin: G. Davit)



126. SCOPHTHALMIDAE: *Psetta maxima maxima*  
(photo: D. Lloris)



127. SCORPAENIDAE: *Helicolenus dactylopterus dactylopterus* juvenile (photo: J. Biosca)

PLANCHE XX



128. SCORPAENIDAE: *Pontinus kuhlii*  
(photo: B. Sansò)



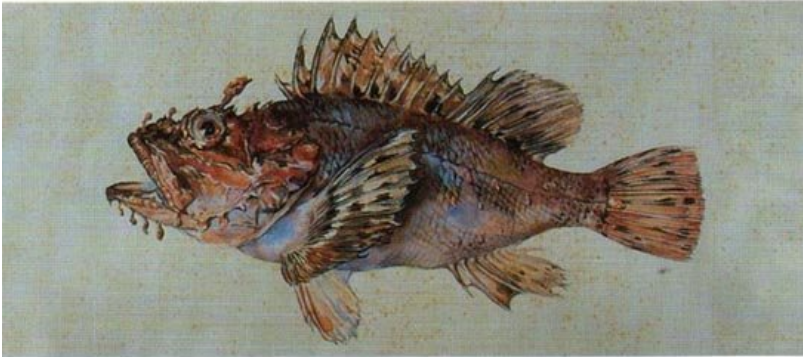
129. SCORPAENIDAE: *Scorpaena elongata*  
(photo: J. Biosca)



130. SCORPAENIDAE: *Scorpaena loppei*  
(photo: D. Lloris)



131. SCORPAENIDAE: *Scorpaena notata*  
(photo: J. Biosca)



132. SCORPAENIDAE:  
*Scorpaena scrofa*  
(dessin: G. Davit)

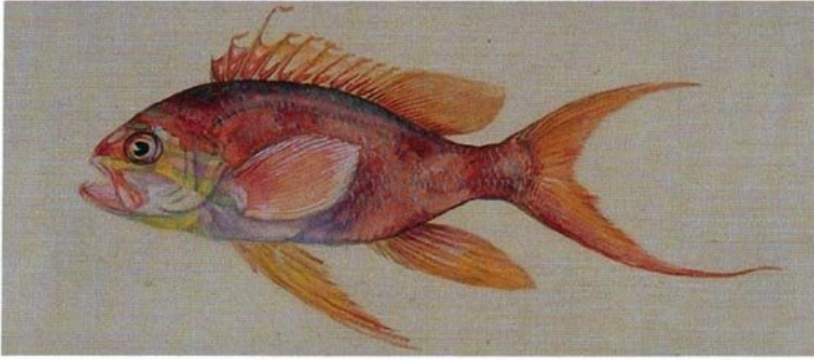


133. SCORPAENIDAE: *Scorpaena scrofa*  
(photo: D. Lloris)



134. SCORPAENIDAE: *Trachyscorpia cristulata echinata* (photo: I. Franco)

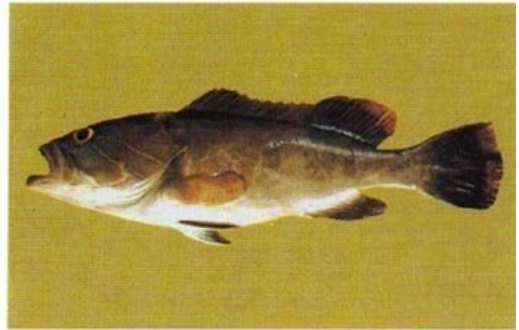
PLANCHE XXI



135. SERRANDINAE: *Anthias anthias*  
(dessin: G. Davit)



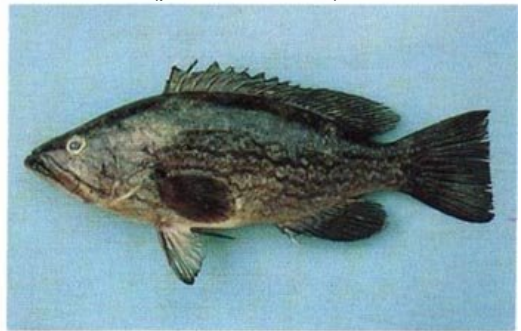
136. SERRANDINAE: *Anthias anthias*  
(photo: I. Franco)



137. SERRANDINAE: *Epinephelus aeneus*  
(photo: G. Bianchi)



138. SERRANDINAE: *Epinephelus marginatus*  
(photo: M. Bellemans)



139. SERRANDINAE: *Mycteroperca rubra*  
(photo: M. Bellemans)



140. SERRANDINAE: *Polyprion americanus*  
(photo: D. Lloris)

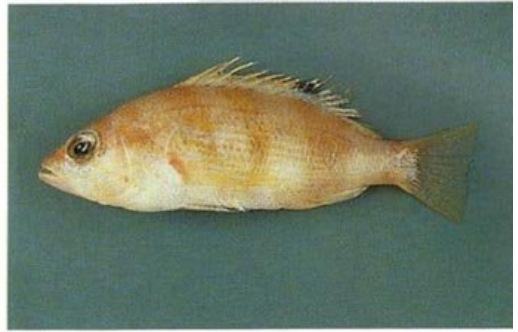


141. SERRANDINAE: *Serranus atricauda*  
(photo: P. Rè)

PLANCHE XXII



142. SERRANDINAE: *Serranus cabrilla*  
(photo: M. Bellemans)



143. SERRANDINAE: *Serranus hepatus*  
(photo: J. Biosca)



144. SOLEIDAE: *Dicologlossa hexophthalma*  
(photo: W. Schneider)



145. SOLEIDAE: *Microchirus ocellatus*  
(photo: D. Lloris)



146. SOLEIDAE: *Microchirus variegatus*  
(photo: D. Lloris)



147. SOLEIDAE: *Monochirus hispidus*  
(photo: D. Lloris)



148. SOLEIDAE: *Pegusa lascaris*  
(photo: W. Schneider)



149. SPARIDAE: *Boops boops*  
(photo: G. Bianchi)