

**JOPPATOWNE HIGH SCHOOL
LIMITED RENOVATION
JOPPATOWNE, MARYLAND**

ADDENDUM NO. 3

May 12, 2020

ADDENDUM NO. 3

Please attach this Addendum to the Project Manual. The Addendum is hereby made part of the Contract Documents on which the Contract will be based and is issued to modify or correct the Original Contract Documents.

Bid Date: The Bid Date is **Thursday, May 21, 2020 at 10:00 A.M.** local time.

GENERAL:

A3.0 ELECTRICAL ADDENDUM DRAWINGS WERE INADVERTANTLY OMITTED FROM THE SEPARATE ATTACHMENT WITH THE INITIAL ISSUE OF ADDENDUM NO. 2.

DRAWINGS: UNDER SEPARATE ATTACHMENT THE FOLLOWING DRAWINGS ARE REVISED AS PART OF THIS ADDENDUM.

ELECTRICAL:

- E0.01 ELECTRICAL SYMBOLS, ABBREVIATIONS AND NOTES –
- E0.22 ELECTRICAL SCHEDULES – *Updated panel schedules.*
- E0.23 ELECTRICAL SCHEDULES– *Updated panel schedules.*
- E0.26 ELECTRICAL SCHEDULES– *Updated panel schedules.*
- E0.27 ELECTRICAL SCHEDULES– *Updated panel schedules.*
- E0.29 SCHEDULE OF TELECOMMUNICATION OUTLETS
 - A. *Updated notes.*
 - B. *Added Details of Classroom Telecomm Devices*
- E2.02 MAIN LEVEL AREA B – POWER – *Revised room name from "Cust. b126" to "Elec. b126."*
- E2.05 MAIN LEVEL AREA E – POWER
 - A. *Added symbology and circuits for EUH's & VF-7 in main electric room (VF-7 had a circuit just not symbology)*
 - B. *Added symbology and circuits for FCU-5*
- E2.09 LOWER LEVEL AREA D – POWER – *Added symbology and circuits for EUH's*
- E2.10 PARTIAL ROOF PLAN ELECTRICAL – *Revised schedule of mechanical equipment connections, added row for HP-5*
- E3.02 MAIN LEVEL AREA B – BASE BID LIGHTING – *Added light fixture tags for wall packs*
- E3.03 MAIN LEVEL AREA C – BASE BID LIGHTING – *Shifted light fixtures and added (2) light fixtures in FOT C121.*
- E3.05 MAIN LEVEL AREA E - BASE BID LIGHTING – *Removed light fixtures showing over new cooler in main kitchen, revised light fixtures in OFFICE E138, CUST E239, TCKT E140, IDF E141*
- E4.03 MAIN LEVEL AREA C – ADD ALTERNATE LIGHTING - *Shifted light fixtures and added (2) light fixtures in FOT C121.*
- E4.05 MAIN LEVEL AREA E – ADD ALTERNATE LIGHTING - *Removed light fixtures showing over new cooler in main kitchen, revised light fixtures in OFFICE E138, CUST E239, TCKT E140, IDF*

**JOPPATOWNE HIGH SCHOOL
LIMITED RENOVATION
JOPPATOWNE, MARYLAND**

ADDENDUM NO. 3

May 12, 2020

- E6.02 ELECTRICAL PART PLANS – *Added receptacle for chemical treatment system, added power for EUH's in boiler room*
- E6.07 ELECTRICAL PART PLANS – *Shifted light fixtures in MULTIPURPOSE ROOM C120*

End of Addendum No. 3

ABBREVIATIONS

- CD CHASING TO BE REPEATED
CND CHASING TO BE REPEATED
CND CHASING TO BE REPEATED
CND CHASING TO BE REPEATED

POWER DISTRIBUTION

- WIRING SYMBOLS AND NOTATION
WIRING SYMBOLS AND NOTATION
WIRING SYMBOLS AND NOTATION
WIRING SYMBOLS AND NOTATION

LIGHTING CONTROLS

- GENERAL NOTES
GENERAL NOTES
GENERAL NOTES
GENERAL NOTES

POWER AND LIGHTING CIRCUIT DESIGNATIONS

- POWER AND LIGHTING CIRCUIT DESIGNATIONS
POWER AND LIGHTING CIRCUIT DESIGNATIONS
POWER AND LIGHTING CIRCUIT DESIGNATIONS

ELECTRICAL GENERAL NOTES

- A. REFER TO SPECIFICATIONS FOR ADDITIONAL REQUIREMENTS
A. REFER TO SPECIFICATIONS FOR ADDITIONAL REQUIREMENTS
A. REFER TO SPECIFICATIONS FOR ADDITIONAL REQUIREMENTS

FIRE ALARM SYSTEM

- 1. FIRE ALARM SYSTEM
1. FIRE ALARM SYSTEM
1. FIRE ALARM SYSTEM

MOUNTING HEIGHTS

- 1. MOUNTING HEIGHTS
1. MOUNTING HEIGHTS
1. MOUNTING HEIGHTS

SECURITY/PAGING

- 1. SECURITY/PAGING
1. SECURITY/PAGING
1. SECURITY/PAGING

LUMINAIRES

- 1. LUMINAIRES
1. LUMINAIRES
1. LUMINAIRES

ELECTRICAL LOAD SUMMARY

Table with columns: CATEGORY, LOAD, DEMAND FACTOR, TOTAL LOAD. Includes categories like LIGHTING, PLUG LOADS, etc.

MULTI-OUTLET ASSEMBLIES

REFER TO SPECIFICATIONS FOR ADDITIONAL INFORMATION AND UNPUBLISHED DETAILS. VERIFY SEATING SECTIONS WITH ARCHITECTURAL CONTRACTOR.

CONVENTIONS

- 1. CONVENTIONS
1. CONVENTIONS
1. CONVENTIONS

ELECTRICAL DRAWING LIST

Table with columns: SHEET NO., SHEET TITLE, QUANTITY, UNIT, etc. Lists various electrical drawings and their quantities.

Table with columns: No., DESCRIPTION, DATE. Shows revision history for the drawing.

JOPPATOWNE HIGHER EDUCATION CENTER
PSC NO. 12.046.16P
BALA SWA ENGINEERS

JOPPATOWNE HIGH SCHOOL LIMITED RENOVATION
555 JOPPA FARM ROAD
JOPPATOWNE, MARYLAND 21085

HARFORD COUNTY PUBLIC SCHOOLS
123 SOUTH HICKORY AVENUE
DEL. AVE, MARYLAND 21018

ELECTRICAL SYMBOLS, ABBREVIATIONS AND NOTES

PROFESSIONAL CERTIFICATION
I certify that these drawings were prepared or prepared under my direct supervision and that I am a duly Licensed Professional Engineer in the State of Maryland, License No. 7099, Expired Date 06/30/2020.

DATE: 04/11/2020
PROJ. NUMBER: E0.01
SCALE: 10'-0"=1'

PANEL SECTION LOCATION	AREA OFFICE AREA	MAN. WT. RATING MAIN CIRCUIT V. B. W.	TR. MVA 250 A MID 480/277V, 3Ø, 3W	LOADING STANDARD NEUTRAL GROUNDING STANDARD	LOADING STANDARD NEUTRAL GROUNDING STANDARD	WIRE AND CONDUIT	WIRE AND CONDUIT
1.2	1.2	1.2	1.2	1.2	1.2	1.2	1.2

PANEL SECTION LOCATION	AREA OFFICE AREA	MAN. WT. RATING MAIN CIRCUIT V. B. W.	TR. MVA 100 A MID 480/277V, 3Ø, 3W	LOADING STANDARD NEUTRAL GROUNDING STANDARD	LOADING STANDARD NEUTRAL GROUNDING STANDARD	WIRE AND CONDUIT	WIRE AND CONDUIT
1.2	1.2	1.2	1.2	1.2	1.2	1.2	1.2

PANEL SECTION LOCATION	AREA OFFICE AREA	MAN. WT. RATING MAIN CIRCUIT V. B. W.	TR. MVA 100 A MID 480/277V, 3Ø, 3W	LOADING STANDARD NEUTRAL GROUNDING STANDARD	LOADING STANDARD NEUTRAL GROUNDING STANDARD	WIRE AND CONDUIT	WIRE AND CONDUIT
1.2	1.2	1.2	1.2	1.2	1.2	1.2	1.2

NO.	DESCRIPTION	DATE
1	CD SUBMISSION	02/20/20
2	FINAL REVIEW	04/12/20
3	RELEASE FOR BIDDING	04/12/20
4	ADDENDUM NO. 2	05/11/20

JOPPATOWNE
PSC NO. 12.046.16LP
BALA *3M*

PANEL SECTION LOCATION	AREA OFFICE AREA	MAN. WT. RATING MAIN CIRCUIT V. B. W.	TR. MVA 250 A MID 480/277V, 3Ø, 3W	LOADING STANDARD NEUTRAL GROUNDING STANDARD	LOADING STANDARD NEUTRAL GROUNDING STANDARD	WIRE AND CONDUIT	WIRE AND CONDUIT
1.2	1.2	1.2	1.2	1.2	1.2	1.2	1.2

PANEL SECTION LOCATION	AREA OFFICE AREA	MAN. WT. RATING MAIN CIRCUIT V. B. W.	TR. MVA 100 A MID 480/277V, 3Ø, 3W	LOADING STANDARD NEUTRAL GROUNDING STANDARD	LOADING STANDARD NEUTRAL GROUNDING STANDARD	WIRE AND CONDUIT	WIRE AND CONDUIT
1.2	1.2	1.2	1.2	1.2	1.2	1.2	1.2

PANEL SECTION LOCATION	AREA OFFICE AREA	MAN. WT. RATING MAIN CIRCUIT V. B. W.	TR. MVA 100 A MID 480/277V, 3Ø, 3W	LOADING STANDARD NEUTRAL GROUNDING STANDARD	LOADING STANDARD NEUTRAL GROUNDING STANDARD	WIRE AND CONDUIT	WIRE AND CONDUIT
1.2	1.2	1.2	1.2	1.2	1.2	1.2	1.2

JOPPATOWNE HIGH SCHOOL LIMITED RENOVATION
555 JOPPA FARM ROAD
JOPPATOWNE, MARYLAND 21085

PANEL SECTION LOCATION	AREA OFFICE AREA	MAN. WT. RATING MAIN CIRCUIT V. B. W.	TR. MVA 250 A MID 480/277V, 3Ø, 3W	LOADING STANDARD NEUTRAL GROUNDING STANDARD	LOADING STANDARD NEUTRAL GROUNDING STANDARD	WIRE AND CONDUIT	WIRE AND CONDUIT
1.2	1.2	1.2	1.2	1.2	1.2	1.2	1.2

PANEL SECTION LOCATION	AREA OFFICE AREA	MAN. WT. RATING MAIN CIRCUIT V. B. W.	TR. MVA 100 A MID 480/277V, 3Ø, 3W	LOADING STANDARD NEUTRAL GROUNDING STANDARD	LOADING STANDARD NEUTRAL GROUNDING STANDARD	WIRE AND CONDUIT	WIRE AND CONDUIT
1.2	1.2	1.2	1.2	1.2	1.2	1.2	1.2

PANEL SECTION LOCATION	AREA OFFICE AREA	MAN. WT. RATING MAIN CIRCUIT V. B. W.	TR. MVA 100 A MID 480/277V, 3Ø, 3W	LOADING STANDARD NEUTRAL GROUNDING STANDARD	LOADING STANDARD NEUTRAL GROUNDING STANDARD	WIRE AND CONDUIT	WIRE AND CONDUIT
1.2	1.2	1.2	1.2	1.2	1.2	1.2	1.2



HARFORD COUNTY PUBLIC SCHOOLS
OWNERS/CLIENTS
102 SOUTH HANCOCK AVENUE
BCL AIR, MARYLAND 21018

PANEL SECTION LOCATION	AREA OFFICE AREA	MAN. WT. RATING MAIN CIRCUIT V. B. W.	TR. MVA 250 A MID 480/277V, 3Ø, 3W	LOADING STANDARD NEUTRAL GROUNDING STANDARD	LOADING STANDARD NEUTRAL GROUNDING STANDARD	WIRE AND CONDUIT	WIRE AND CONDUIT
1.2	1.2	1.2	1.2	1.2	1.2	1.2	1.2

PANEL SECTION LOCATION	AREA OFFICE AREA	MAN. WT. RATING MAIN CIRCUIT V. B. W.	TR. MVA 100 A MID 480/277V, 3Ø, 3W	LOADING STANDARD NEUTRAL GROUNDING STANDARD	LOADING STANDARD NEUTRAL GROUNDING STANDARD	WIRE AND CONDUIT	WIRE AND CONDUIT
1.2	1.2	1.2	1.2	1.2	1.2	1.2	1.2

PANEL SECTION LOCATION	AREA OFFICE AREA	MAN. WT. RATING MAIN CIRCUIT V. B. W.	TR. MVA 100 A MID 480/277V, 3Ø, 3W	LOADING STANDARD NEUTRAL GROUNDING STANDARD	LOADING STANDARD NEUTRAL GROUNDING STANDARD	WIRE AND CONDUIT	WIRE AND CONDUIT
1.2	1.2	1.2	1.2	1.2	1.2	1.2	1.2

PANEL SECTION LOCATION	AREA OFFICE AREA	MAN. WT. RATING MAIN CIRCUIT V. B. W.	TR. MVA 250 A MID 480/277V, 3Ø, 3W	LOADING STANDARD NEUTRAL GROUNDING STANDARD	LOADING STANDARD NEUTRAL GROUNDING STANDARD	WIRE AND CONDUIT	WIRE AND CONDUIT
1.2	1.2	1.2	1.2	1.2	1.2	1.2	1.2

PANEL SECTION LOCATION	AREA OFFICE AREA	MAN. WT. RATING MAIN CIRCUIT V. B. W.	TR. MVA 100 A MID 480/277V, 3Ø, 3W	LOADING STANDARD NEUTRAL GROUNDING STANDARD	LOADING STANDARD NEUTRAL GROUNDING STANDARD	WIRE AND CONDUIT	WIRE AND CONDUIT
1.2	1.2	1.2	1.2	1.2	1.2	1.2	1.2

PANEL SECTION LOCATION	AREA OFFICE AREA	MAN. WT. RATING MAIN CIRCUIT V. B. W.	TR. MVA 100 A MID 480/277V, 3Ø, 3W	LOADING STANDARD NEUTRAL GROUNDING STANDARD	LOADING STANDARD NEUTRAL GROUNDING STANDARD	WIRE AND CONDUIT	WIRE AND CONDUIT
1.2	1.2	1.2	1.2	1.2	1.2	1.2	1.2

SHEET TITLE
ELECTRICAL SCHEDULES

SCALE: AS SHOWN
PROFESSIONAL CERTIFICATION
I certify that these documents are prepared or approved by me or a duly licensed professional engineer under my direct supervision and I am a duly licensed professional engineer in the State of Maryland. License No. 14066, expires 06/30/2024.

BCA
Banta Campbell Architects, Inc.
1021 Northport Circle, Suite 214
Columbia, Maryland 21046
410.326.6666
www.bantacampbell.com

DATE: 04/12/2020
PROJ. NUMBER: E0.23
SCALE: TO-R-40
BCL R-204

PANEL SECTION LOCATION	W/RE AND COND.	W/RE AND COND.	W/RE AND COND.	W/RE AND COND.	W/RE AND COND.	W/RE AND COND.	W/RE AND COND.	W/RE AND COND.	W/RE AND COND.	W/RE AND COND.	W/RE AND COND.	W/RE AND COND.	W/RE AND COND.	W/RE AND COND.	W/RE AND COND.	W/RE AND COND.	W/RE AND COND.	W/RE AND COND.
1	1	1	1	1	1	1	1	1	1	1	1	1	1	1	1	1	1	1

CONNECTED LOADS

1 REFER TO CONDUIT AND FEEDER SCHEDULE ON BS 19
2 FOR CONDUIT AND FEEDER INFORMATION REFER TO STANDARD 3 PHASE DRY TYPE TRANSFORMER CHART ON BS 15

PANEL SECTION LOCATION	W/RE AND COND.	W/RE AND COND.	W/RE AND COND.	W/RE AND COND.	W/RE AND COND.	W/RE AND COND.	W/RE AND COND.	W/RE AND COND.	W/RE AND COND.	W/RE AND COND.	W/RE AND COND.	W/RE AND COND.	W/RE AND COND.	W/RE AND COND.	W/RE AND COND.	W/RE AND COND.	W/RE AND COND.	W/RE AND COND.
1	1	1	1	1	1	1	1	1	1	1	1	1	1	1	1	1	1	1

CONNECTED LOADS

1 REFER TO CONDUIT AND FEEDER SCHEDULE ON BS 19
2 FOR CONDUIT AND FEEDER INFORMATION REFER TO STANDARD 3 PHASE DRY TYPE TRANSFORMER CHART ON BS 15

PANEL SECTION LOCATION	W/RE AND COND.	W/RE AND COND.	W/RE AND COND.	W/RE AND COND.	W/RE AND COND.	W/RE AND COND.	W/RE AND COND.	W/RE AND COND.	W/RE AND COND.	W/RE AND COND.	W/RE AND COND.	W/RE AND COND.	W/RE AND COND.	W/RE AND COND.	W/RE AND COND.	W/RE AND COND.	W/RE AND COND.	W/RE AND COND.
1	1	1	1	1	1	1	1	1	1	1	1	1	1	1	1	1	1	1

CONNECTED LOADS

1 REFER TO CONDUIT AND FEEDER SCHEDULE ON BS 19
2 FOR CONDUIT AND FEEDER INFORMATION REFER TO STANDARD 3 PHASE DRY TYPE TRANSFORMER CHART ON BS 15

PANEL SECTION LOCATION	W/RE AND COND.	W/RE AND COND.	W/RE AND COND.	W/RE AND COND.	W/RE AND COND.	W/RE AND COND.	W/RE AND COND.	W/RE AND COND.	W/RE AND COND.	W/RE AND COND.	W/RE AND COND.	W/RE AND COND.	W/RE AND COND.	W/RE AND COND.	W/RE AND COND.	W/RE AND COND.	W/RE AND COND.	W/RE AND COND.
1	1	1	1	1	1	1	1	1	1	1	1	1	1	1	1	1	1	1

CONNECTED LOADS

1 REFER TO CONDUIT AND FEEDER SCHEDULE ON BS 19

PANEL SECTION LOCATION	W/RE AND COND.	W/RE AND COND.	W/RE AND COND.	W/RE AND COND.	W/RE AND COND.	W/RE AND COND.	W/RE AND COND.	W/RE AND COND.	W/RE AND COND.	W/RE AND COND.	W/RE AND COND.	W/RE AND COND.	W/RE AND COND.	W/RE AND COND.	W/RE AND COND.	W/RE AND COND.	W/RE AND COND.	W/RE AND COND.
1	1	1	1	1	1	1	1	1	1	1	1	1	1	1	1	1	1	1

CONNECTED LOADS

1 REFER TO CONDUIT AND FEEDER SCHEDULE ON BS 19

PANEL SECTION LOCATION	W/RE AND COND.	W/RE AND COND.	W/RE AND COND.	W/RE AND COND.	W/RE AND COND.	W/RE AND COND.	W/RE AND COND.	W/RE AND COND.	W/RE AND COND.	W/RE AND COND.	W/RE AND COND.	W/RE AND COND.	W/RE AND COND.	W/RE AND COND.	W/RE AND COND.	W/RE AND COND.	W/RE AND COND.	W/RE AND COND.
1	1	1	1	1	1	1	1	1	1	1	1	1	1	1	1	1	1	1

CONNECTED LOADS

1 REFER TO CONDUIT AND FEEDER SCHEDULE ON BS 19

PANEL SECTION LOCATION	W/RE AND COND.	W/RE AND COND.	W/RE AND COND.	W/RE AND COND.	W/RE AND COND.	W/RE AND COND.	W/RE AND COND.	W/RE AND COND.	W/RE AND COND.	W/RE AND COND.	W/RE AND COND.	W/RE AND COND.	W/RE AND COND.	W/RE AND COND.	W/RE AND COND.	W/RE AND COND.	W/RE AND COND.	W/RE AND COND.
1	1	1	1	1	1	1	1	1	1	1	1	1	1	1	1	1	1	1

CONNECTED LOADS

1 REFER TO CONDUIT AND FEEDER SCHEDULE ON BS 19
2 FOR CONDUIT AND FEEDER INFORMATION REFER TO STANDARD 3 PHASE DRY TYPE TRANSFORMER CHART ON BS 15

PANEL SECTION LOCATION	W/RE AND COND.	W/RE AND COND.	W/RE AND COND.	W/RE AND COND.	W/RE AND COND.	W/RE AND COND.	W/RE AND COND.	W/RE AND COND.	W/RE AND COND.	W/RE AND COND.	W/RE AND COND.	W/RE AND COND.	W/RE AND COND.	W/RE AND COND.	W/RE AND COND.	W/RE AND COND.	W/RE AND COND.	W/RE AND COND.
1	1	1	1	1	1	1	1	1	1	1	1	1	1	1	1	1	1	1

CONNECTED LOADS

1 REFER TO CONDUIT AND FEEDER SCHEDULE ON BS 19

PANEL SECTION LOCATION	W/RE AND COND.	W/RE AND COND.	W/RE AND COND.	W/RE AND COND.	W/RE AND COND.	W/RE AND COND.	W/RE AND COND.	W/RE AND COND.	W/RE AND COND.	W/RE AND COND.	W/RE AND COND.	W/RE AND COND.	W/RE AND COND.	W/RE AND COND.	W/RE AND COND.	W/RE AND COND.	W/RE AND COND.	W/RE AND COND.
1	1	1	1	1	1	1	1	1	1	1	1	1	1	1	1	1	1	1

CONNECTED LOADS

1 REFER TO CONDUIT AND FEEDER SCHEDULE ON BS 19

PANEL SECTION LOCATION	W/RE AND COND.	W/RE AND COND.	W/RE AND COND.	W/RE AND COND.	W/RE AND COND.	W/RE AND COND.	W/RE AND COND.	W/RE AND COND.	W/RE AND COND.	W/RE AND COND.	W/RE AND COND.	W/RE AND COND.	W/RE AND COND.	W/RE AND COND.	W/RE AND COND.	W/RE AND COND.	W/RE AND COND.	W/RE AND COND.
1	1	1	1	1	1	1	1	1	1	1	1	1	1	1	1	1	1	1

CONNECTED LOADS

1 REFER TO CONDUIT AND FEEDER SCHEDULE ON BS 19
2 FOR CONDUIT AND FEEDER INFORMATION REFER TO STANDARD 3 PHASE DRY TYPE TRANSFORMER CHART ON BS 15

PANEL SECTION LOCATION	W/RE AND COND.	W/RE AND COND.	W/RE AND COND.	W/RE AND COND.	W/RE AND COND.	W/RE AND COND.	W/RE AND COND.	W/RE AND COND.	W/RE AND COND.	W/RE AND COND.	W/RE AND COND.	W/RE AND COND.	W/RE AND COND.	W/RE AND COND.	W/RE AND COND.	W/RE AND COND.	W/RE AND COND.	W/RE AND COND.
1	1	1	1	1	1	1	1	1	1	1	1	1	1	1	1	1	1	1

CONNECTED LOADS

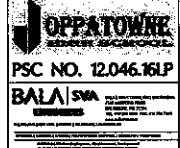
1 REFER TO CONDUIT AND FEEDER SCHEDULE ON BS 19

PANEL SECTION LOCATION	W/RE AND COND.	W/RE AND COND.	W/RE AND COND.	W/RE AND COND.	W/RE AND COND.	W/RE AND COND.	W/RE AND COND.	W/RE AND COND.	W/RE AND COND.	W/RE AND COND.	W/RE AND COND.	W/RE AND COND.	W/RE AND COND.	W/RE AND COND.	W/RE AND COND.	W/RE AND COND.	W/RE AND COND.	W/RE AND COND.
1	1	1	1	1	1	1	1	1	1	1	1	1	1	1	1	1	1	1

CONNECTED LOADS

1 REFER TO CONDUIT AND FEEDER SCHEDULE ON BS 19
2 FOR CONDUIT AND FEEDER INFORMATION REFER TO STANDARD 3 PHASE DRY TYPE TRANSFORMER CHART ON BS 15

NO.	DESCRIPTION	DATE
1	CD SUBMISSION	04/20/20
2	FINAL REVIEW	04/20/20
3	RELEASE FOR BIDDING	04/21/20
4	ADDENDUM NO. 2	05/11/20



JOPPATOWNE HIGH SCHOOL
LIMITED RENOVATION
555 JOPPA FARM ROAD
JOPPATOWNE, MARYLAND 21085



OWNER: HARFORD COUNTY PUBLIC SCHOOLS
102 SOUTH HICKORY AVENUE
BEL AIR, MARYLAND 21038

BEST TITLE ELECTRICAL SCHEDULES

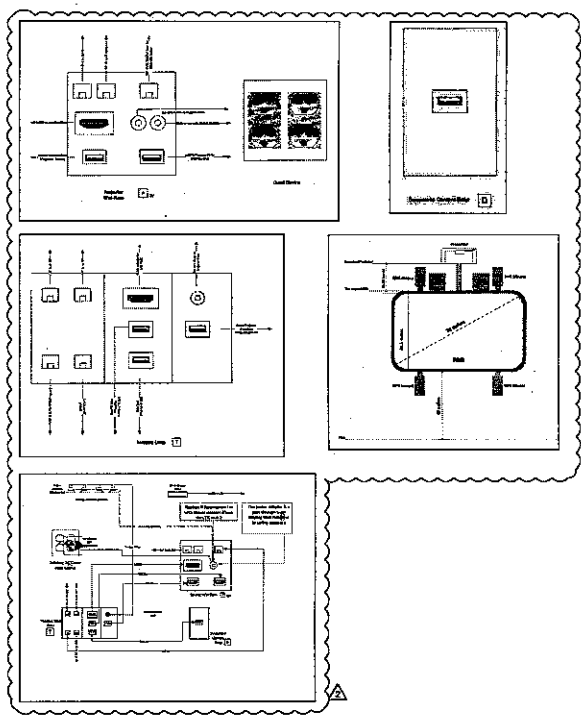
SCALE: AS SHOWN
PROFESSIONAL CERTIFICATION:
I, the undersigned, being a duly licensed Professional Engineer in the State of Maryland, do hereby certify that I am a duly licensed Professional Engineer in the State of Maryland and that I am the author of the above-entitled document, and that the same complies with the Maryland Electrical Code, as amended through 2017, and the National Electrical Code, as amended through 2017.



DATE: 04/11/2020
FIRM NUMBER: E0.26

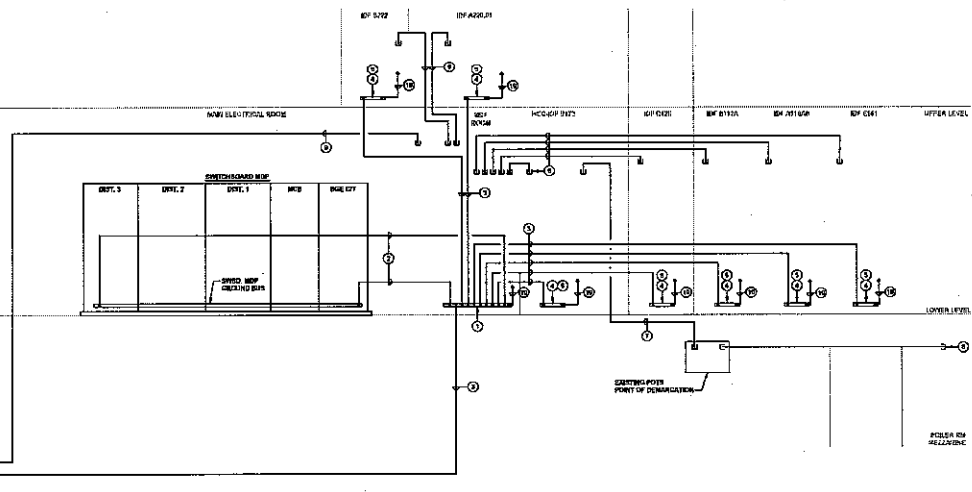
SCALE: 10'-0"=1'-0"
BCA: H-554

SCHEDULE OF TELECOMMUNICATIONS OUTLETS									
OUTLET	OCCUPATION	MECHANICAL ARRANGEMENT	OUTLET IDENTIFIER	RECEPTACLE IN COMMON USE	JACK	WIRELESS CABLE TYPE	CABLE OR DIRECTION	WIRELESS TERMINATION	NOTES
A	WIRELESS ACCESS POINT	CLEAR	STANDARD OUTLET BOX	NO	(1) CAT 6/56A DATA	(1) CAT 6/56A	CLOSEST BY CLOSET	W/4-PATCH PANEL	
B	DIGITAL PHONE	WALL @ 7' AFF. (REVERSE DISPLAY)	WIRELESS EVOLUTION FIBER OPTICS (S&C) WALL BOX	NO	(1) CAT 6/56A DATA	(1) CAT 6/56A	CLOSEST BY CLOSET	DATA PATCH PANEL	
C	DOCUMENT CAMERA	WALL @ 7' AFF. (REVERSE DISPLAY)	STANDARD OUTLET BOX	NO	(1) CAT 6/56A DATA	(1) CAT 6/56A	CLOSEST BY CLOSET	DATA PATCH PANEL	
D	EXISTING DOCUMENT CAMERA	EXISTING	STANDARD OUTLET BOX	NO	(1) CAT 6/56A DATA	(1) CAT 6/56A	CLOSEST BY CLOSET	DATA PATCH PANEL	
E	SECURITY CAMERA TELEPHONE	CHIMNEY POINT OF SHIRT	INDOOR	NO	(1) CAT 6/56A DATA	(1) CAT 6/56A	CLOSEST BY CLOSET	DATA PATCH PANEL	COORDINATE EXACTY ROOM NUMBER & WITH ELEVATION COORDINATOR.
F	CONFERENCE ROOM FLOOR IN/OUT	FLOOR	WIRELESS EVOLUTION FIBER OPTICS (S&C) WALL BOX	NO	(1) CAT 6/56A DATA	(1) CAT 6/56A	CLOSEST BY CLOSET	DATA PATCH PANEL	
G	GENERAL FLOOR BOX	FLOOR	FLOOR BOX	YES	(1) CAT 6/56A DATA (BY QUANTITY AS INDICATED)	(1) CAT 6/56A	CLOSEST BY CLOSET	DATA PATCH PANEL	
GH	GENERAL DATA OUTLET	WALL @ 7' AFF.	STANDARD OUTLET BOX	NO	(1) CAT 6/56A DATA (BY QUANTITY AS INDICATED)	(1) CAT 6/56A	CLOSEST BY CLOSET	DATA PATCH PANEL	
GO	EXISTING GENERAL DATA OUTLET	EXISTING	STANDARD OUTLET BOX	NO	(1) CAT 6/56A DATA (BY QUANTITY AS INDICATED)	(1) CAT 6/56A	CLOSEST BY CLOSET	DATA PATCH PANEL	
D	OFFICE DESK	WALL @ 7' AFF.	STANDARD OUTLET BOX	NO	(1) CAT 6/56A DATA	(1) CAT 6/56A	CLOSEST BY CLOSET	DATA PATCH PANEL	
M	RECEPTION OUTLET	WALL @ 7' AFF. OR EXTENDED PLANK	WIRELESS EVOLUTION FIBER OPTICS (S&C) WALL BOX	NO	(1) CAT 6/56A DATA	(1) CAT 6/56A	CLOSEST BY CLOSET	DATA PATCH PANEL	
P	DISPLAY WALL PLATE FOR INTERACTIVE VIDEO DISPLAY BOARD	WALL @ 7' AFF.	WIRELESS EVOLUTION FIBER OPTICS (S&C) WALL BOX	NO	(1) CAT 6/56A DATA	(1) CAT 6/56A	CLOSEST BY CLOSET	DATA PATCH PANEL	
R	RETAIL POINT OF SALE OUTLET	FIBER OPTICS (S&C) WALL BOX	WIRELESS EVOLUTION FIBER OPTICS (S&C) WALL BOX	NO	(1) CAT 6/56A DATA	(1) CAT 6/56A	CLOSEST BY CLOSET	DATA PATCH PANEL	
S	SHORT THROW VIDEO PROJECTOR	CEILING CENTERED ON WALL DISPLAY	WIRELESS EVOLUTION FIBER OPTICS (S&C) WALL BOX	NO	(1) CAT 6/56A DATA	(1) CAT 6/56A	CLOSEST BY CLOSET	DATA PATCH PANEL	
T	TEACHER WALL PLATE	WALL @ 7' AFF.	WIRELESS EVOLUTION FIBER OPTICS (S&C) WALL BOX	NO	(1) CAT 6/56A DATA	(1) CAT 6/56A	CLOSEST BY CLOSET	DATA PATCH PANEL	
TX	EXISTING TEACHER WALL PLATE WITH INTERACTIVE VIDEO DISPLAY BOARD	EXISTING	WIRELESS EVOLUTION FIBER OPTICS (S&C) WALL BOX	NO	(1) CAT 6/56A DATA	(1) CAT 6/56A	CLOSEST BY CLOSET	DATA PATCH PANEL	
V	WALL MOUNTED VIDEO DISPLAY	WALL MOUNTED DISPLAY	WIRELESS EVOLUTION FIBER OPTICS (S&C) WALL BOX	NO	(1) CAT 6/56A DATA	(1) CAT 6/56A	CLOSEST BY CLOSET	DATA PATCH PANEL	
W	WALL MOUNTED TELEPHONE	WALL @ 7' AFF.	STANDARD OUTLET BOX	NO	(1) CAT 6/56A DATA	(1) CAT 6/56A	CLOSEST BY CLOSET	DATA PATCH PANEL	



GENERAL NOTES:
 A. TELECOMMUNICATIONS CORDING SYSTEM SHALL BE INSTALLED BY STREET ARCHITECTS, WITH THE APPROVAL OF THE CITY OF JOPPTOWNE, MARYLAND.

- DRAWING NOTES:**
- PROVIDE 2" DIA. (MIN.) CONDUIT FOR TELECOMMUNICATIONS CORDING SYSTEM FROM BROWNS CROOKING BARN, BOWEN ARCHITECTS TO WALL ON STAIRWAY. PROVIDE 1/2" DIA. (MIN.) INSULATED BRASS CONDUCTORS.
 - TELECOMMUNICATIONS CORDING SYSTEM SHALL BE INSTALLED BY STREET ARCHITECTS, WITH THE APPROVAL OF THE CITY OF JOPPTOWNE, MARYLAND.
 - PROVIDE 1/2" DIA. (MIN.) CONDUIT FOR TELECOMMUNICATIONS CORDING SYSTEM FROM BROWNS CROOKING BARN, BOWEN ARCHITECTS TO WALL ON STAIRWAY. PROVIDE 1/2" DIA. (MIN.) INSULATED BRASS CONDUCTORS.
 - PROVIDE 1/2" DIA. (MIN.) CONDUIT FOR TELECOMMUNICATIONS CORDING SYSTEM FROM BROWNS CROOKING BARN, BOWEN ARCHITECTS TO WALL ON STAIRWAY. PROVIDE 1/2" DIA. (MIN.) INSULATED BRASS CONDUCTORS.
 - IN ADDITION TO LABEL FOR CONNECTIONS OF THE BROWNS CROOKING BARN, BOWEN ARCHITECTS TO WALL ON STAIRWAY. PROVIDE 1/2" DIA. (MIN.) CONDUIT FOR TELECOMMUNICATIONS CORDING SYSTEM FROM BROWNS CROOKING BARN, BOWEN ARCHITECTS TO WALL ON STAIRWAY. PROVIDE 1/2" DIA. (MIN.) INSULATED BRASS CONDUCTORS.
 - PROVIDE 1/2" DIA. (MIN.) CONDUIT FOR TELECOMMUNICATIONS CORDING SYSTEM FROM BROWNS CROOKING BARN, BOWEN ARCHITECTS TO WALL ON STAIRWAY. PROVIDE 1/2" DIA. (MIN.) INSULATED BRASS CONDUCTORS.
 - PROVIDE 1/2" DIA. (MIN.) CONDUIT FOR TELECOMMUNICATIONS CORDING SYSTEM FROM BROWNS CROOKING BARN, BOWEN ARCHITECTS TO WALL ON STAIRWAY. PROVIDE 1/2" DIA. (MIN.) INSULATED BRASS CONDUCTORS.
 - PROVIDE 1/2" DIA. (MIN.) CONDUIT FOR TELECOMMUNICATIONS CORDING SYSTEM FROM BROWNS CROOKING BARN, BOWEN ARCHITECTS TO WALL ON STAIRWAY. PROVIDE 1/2" DIA. (MIN.) INSULATED BRASS CONDUCTORS.
 - PROVIDE 1/2" DIA. (MIN.) CONDUIT FOR TELECOMMUNICATIONS CORDING SYSTEM FROM BROWNS CROOKING BARN, BOWEN ARCHITECTS TO WALL ON STAIRWAY. PROVIDE 1/2" DIA. (MIN.) INSULATED BRASS CONDUCTORS.
 - PROVIDE 1/2" DIA. (MIN.) CONDUIT FOR TELECOMMUNICATIONS CORDING SYSTEM FROM BROWNS CROOKING BARN, BOWEN ARCHITECTS TO WALL ON STAIRWAY. PROVIDE 1/2" DIA. (MIN.) INSULATED BRASS CONDUCTORS.



1 TELECOMMUNICATIONS TRUNK CABLE AND GROUNDING RISER DIAGRAM
 NOT TO SCALE

ISSUE or REVISION:

NO.	DESCRIPTION	DATE
02	REVISED	02/25/20
01	FINAL REVIEW	04/02/20
1	RELEASE FOR BIDDING	04/12/20
	ADDENDUM NO. 2	05/11/20

JOPPTOWNE
 PSC NO. 12.046.16LP
BALA *SWA*
 ARCHITECTS

**JOPPTOWNE HIGH SCHOOL
 LIMITED RENOVATION**
 555 JOPPA FARM ROAD
 JOPPTOWNE, MARYLAND 21085

**HARFORD COUNTY
 PUBLIC SCHOOLS**

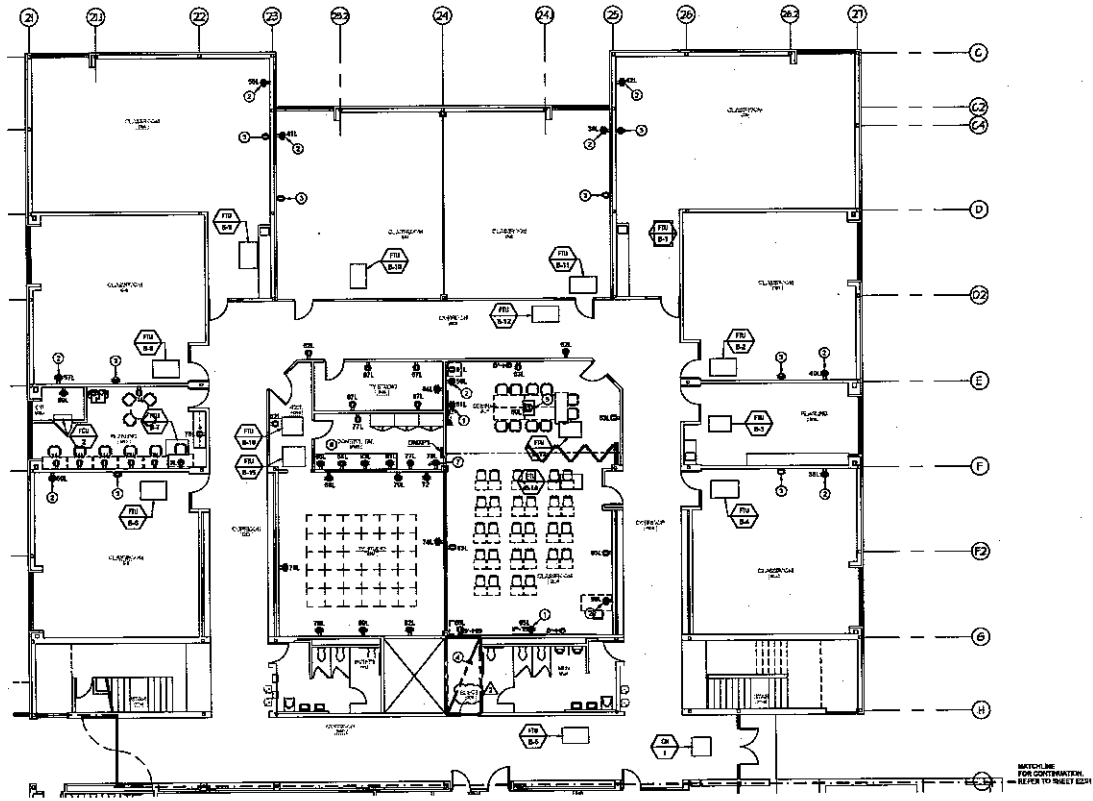
OWNER/CLIENT:
**HARFORD COUNTY
 PUBLIC SCHOOLS**
 100 SOUTH HANCOCK AVENUE
 BEL AIR, MARYLAND 21015

PROJECT TITLE:
**SCHEDULE OF
 TELECOMMUNICATION
 OUTLETS**

SCALE: AS SHOWN
PROFESSIONAL CERTIFICATION:
 I, the undersigned, being a duly licensed Professional Engineer in the State of Maryland, do hereby certify that I am the author of and I am a duly registered Professional Engineer in the State of Maryland, License No. 1074, expiration date August 6, 2022.

BCA
 Banta Campbell
 ARCHITECTS, INC.
 1020 Northwood Circle, Suite 204
 Columbia, Maryland 21046
 410-320-0000
 www.bantacampbell.com

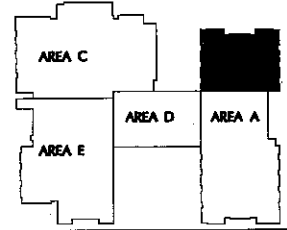
DATE: 04/17/2020
 PROJ. NUMBER:
 SHEET: 10-11-410
 OF: 324
E029



MAIN LEVEL FLOOR PLAN - AREA B - POWER
 SCALE: 1/8" = 1'-0"

SCHEDULE OF MECHANICAL EQUIPMENT CONNECTIONS - AREA B						
CONNECTION NO.	VOLTS - PHASE	ELECTRICAL CAPACITIES		DEVICE	CIRCUIT NO.	
		MOTOR (HP)	HEAT (KW)			
F1L B-1	277V-1Ø	Ø2	-	3.5	Ø	MS1A-1
F1L B-2	277V-1Ø	Ø2	-	3.5	Ø	MS1A-1
F1L B-3	277V-1Ø	Ø3	-	2	Ø	MS1A-2
F1L B-4	277V-1Ø	Ø3	-	2	Ø	MS1A-2
F1L B-5	277V-1Ø	Ø2	-	3.5	Ø	MS1A-1
F1L B-6	277V-1Ø	Ø2	-	3.5	Ø	MS1A-1
F1L B-7	277V-1Ø	Ø3	-	2	Ø	MS1A-2
F1L B-8	277V-1Ø	Ø2	-	3.5	Ø	MS1A-1
F1L B-9	277V-1Ø	Ø2	-	3.5	Ø	MS1A-1
F1L B-10	277V-1Ø	Ø2	-	3.5	Ø	MS1A-1
F1L B-11	277V-1Ø	Ø2	-	3.5	Ø	MS1A-1
F1L B-12	277V-1Ø	Ø3	-	2	Ø	MS1A-2
F1L B-13	277V-1Ø	Ø3	-	2	Ø	MS1A-2
F1L B-14	277V-1Ø	Ø2	-	2	Ø	MS1A-2
F1L B-15	277V-1Ø	Ø2	-	3.5	Ø	MS1A-1
F1L B-16	277V-1Ø	Ø3	-	2	Ø	MS1A-2
PC12	208V-1Ø	-	-	Ø.35	Ø	MS1A-1
Ø17	120V-1Ø	Ø3	-	7	Ø	MS1A-1

CIRCUIT DESIGNATION SCHEDULE	
CIRCUIT	PANEL DESIGNATION
X	MS1A
Y	MS1A
Z	MS1A



ELECTRICAL GENERAL NOTES:

- REFER TO DRAWING SETS FOR SYMBOLS AND ABREVIATIONS.
- A "V" INSIDE A RECEPTACLE SYMBOLS NON-STANDARD MOUNTING HEIGHT OR DEVICE IS MOUNTED ABOVE COUNTERTOP OR CASING. COORDINATE THE MOUNTING HEIGHT WITH ARCHITECTURAL DETAILS, ELEVATIONS, AND APPROVED CRAFTSMAN SHOP DRAWINGS.

ELECTRICAL DRAWING NOTES:

- DO NOT QUOTE INSIDE ANY BOX FOR INTERACTIVE PANEL. ALL SYMBOLS REFER TO SCHEDULE OF TELECOMMUNICATIONS OUTLET ON SHEET E201 AND SHEET E202 FOR MORE INFORMATION.
- DO NOT QUOTE INSIDE BOX FOR TEACHER WALL PLATE. COORDINATE LIGHT LOCATION WITH OWNER. REFER TO SCHEDULE OF TELECOMMUNICATIONS OUTLET ON SHEET E201 FOR MORE INFORMATION.
- CEILING RECEPTACLE TO SERVICE SHORT TRAVEL PROJECTOR. COORDINATE EXACT LOCATION WITH OWNER. CIRCLES REPRESENTING EXISTING CEILING RECEPTACLE SHALL BE RECORDED AND REPEATED AS REQUIRED. REFER TO SCHEDULE OF TELECOMMUNICATIONS OUTLET ON SHEET E201 FOR MORE INFORMATION.
- FOR VEHICULAR TRAFFIC REFER TO "PART PLAN - AREA B - ELECTRICAL BORN-POWER" ON SHEET E201.
- PROVIDE 5-MINUTE CONDUIT WITH PULL FORD FROM FLOOR BOX TO INTERACTIVE PANEL WALL BOX FOR ROOM CONNECTION.
- COORDINATE ALL RECEPTACLE LOCATIONS AND MOUNTING HEIGHTS IN THIS ROOM WITH OWNER.
- COORDINATE ALL RECEPTACLE LOCATIONS AND MOUNTING HEIGHTS IN THIS ROOM WITH OWNER.
- DO NOT LIST POWER BY OUTDOOR UNIT. MAKE ALL FINAL CONNECTIONS EXTERIOR TO THE UNIT OR ROOF ABOVE. EXTERNALLY MOUNTED CONDENSATE PUMP SHALL BE POWERED FROM BROWN AND WHITE FINAL CONNECTIONS AS REQUIRED.

ISSUE or REVISION		
No.	DESCRIPTION	DATE
00	SUBMISSION	02/02/20
01	FINAL REVIEW	04/02/20
02	RELEASE FOR BIDDING	04/12/20
03	ADDENDUM NO. 2	05/18/20

JOPPATOWNE LIMITED RENOVATION
 PSC NO. 12046.16LP
 BALAI SPA

JOPPATOWNE HIGH SCHOOL LIMITED RENOVATION
 555 JOPPA FARM ROAD
 JOPPOTOWNE, MARYLAND 21085

HARFORD COUNTY PUBLIC SCHOOLS

OWNER/DEVELOPER:
HARFORD COUNTY PUBLIC SCHOOLS
 102 SOUTH HICKORY AVENUE
 DEL. AVE, MARYLAND 21018

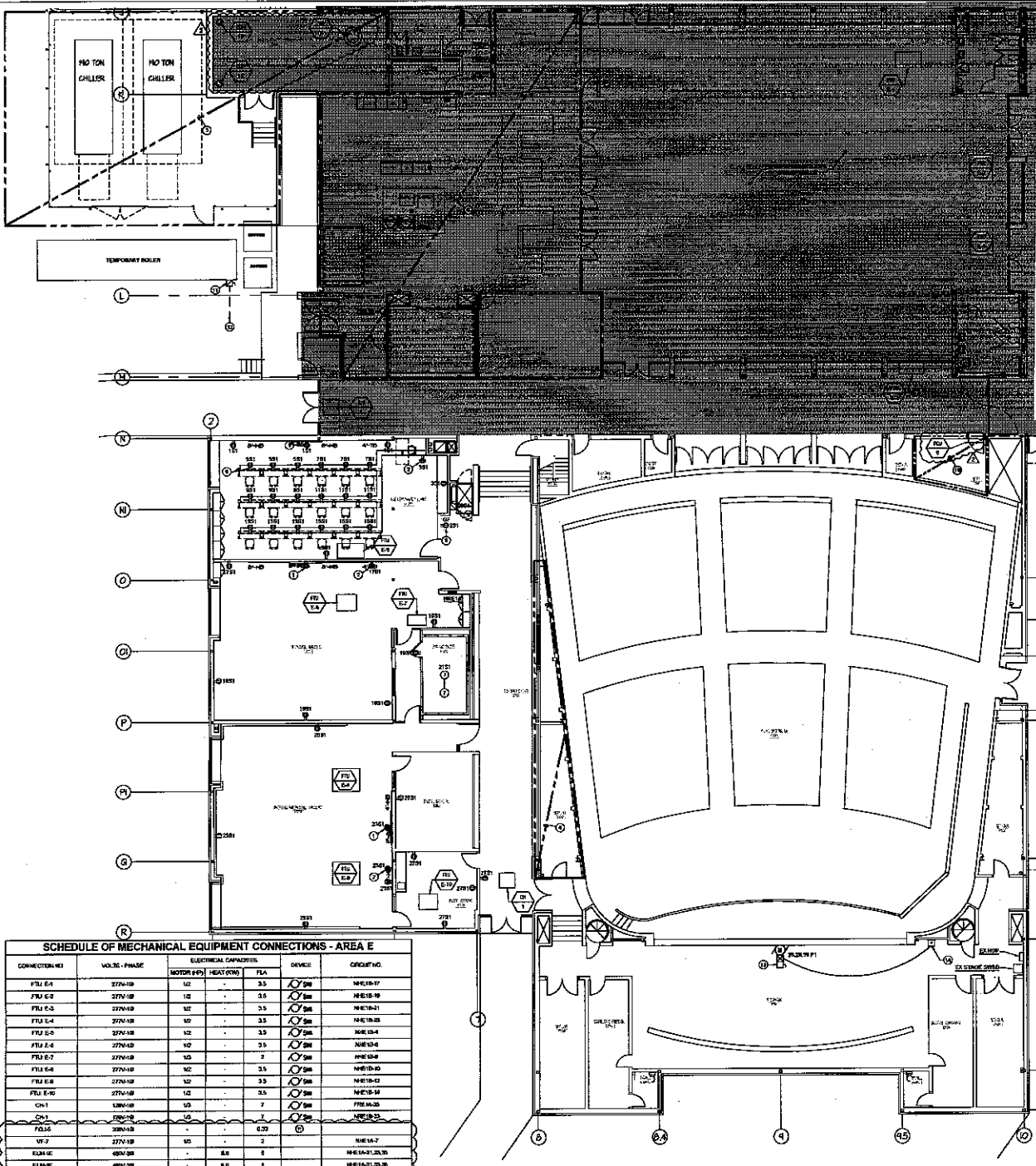
SHEET TITLE:
MAIN LEVEL AREA B - POWER

SCALE: AS SHOWN
 PROFESSIONAL CERTIFICATION:
 I, the undersigned, being a duly licensed Professional Engineer in the State of Maryland, do hereby certify that I am the author of and I prepared the design of the drawings herein.

BCA
 Banta Campbell Architects, Inc.
 10271 Woodloch Circle, Suite 218
 Columbia, Maryland 21046
 410.326.9000
 www.bcaarchitects.com

DATE: 04/12/2020

PROJ. NUMBER	E202
NUMBER	10-R-410
SCALE	AS SHOWN



REPLACE FOR CONTINUATION
REFER TO SHEET E201

REPLACE FOR CONTINUATION
REFER TO SHEET E202

ELECTRICAL GENERAL NOTES:

- REFER TO CHANGES IS BY FOR SYMBOLS AND DIMENSIONS.
- A "V" INSIDE A RECEIPTABLE DEVICES NEW STANDARD MOUNTED HEIGHT OR DEVICE IS MOUNTED ABOVE CEILING OR CHANGING. COORDINATE THE MOUNTING HEIGHT WITH ARCHITECTURAL DETAILS, ELEVATIONS, AND APPROVED CONTRACTOR SHOP DRAWINGS.

ELECTRICAL DRAWING NOTES:

- MOUNT CHASSIS BUSES AND BUS FOR INTERACTIVE PANELS. AC ADAPTERS REFER TO SCHEDULE OF TELECOMMUNICATIONS OUTLETS ON SHEET E201 AND SHEET E202 FOR MORE INFORMATION.
- MOUNT CHASSIS BUSES AND BUS TRUCKS FOR WALL PLATE. COORDINATE EXACT LOCATION WITH OWNER. REFER TO SCHEDULE OF TELECOMMUNICATIONS OUTLETS ON SHEET E201 AND SHEET E202 FOR MORE INFORMATION.
- FOR WORK IN THIS AREA, REFER TO "WALL PLATE - BARR ELECTRICAL ROOM, CHILLER AND GENERATION YARD - POWER ON SHEET E201."
- FOR WORK IN THIS ROOM REFER TO "PART PLAN - AREA E - STORAGE BTL - POWER ON SHEET E201."
- PROVIDE 1-PHASE PULSED SAFETY SWITCH PLACES AT 50 AMPERES, PROVIDE PROVISIONS ON ENCLOSURE FOR LUGGING IN THE OPEN POSITION BY INSTALLATION RECOMMENDED BY PLATFORM LIFT MANUFACTURER. MAKE ALL FINAL CONNECTIONS TO PLATFORM LIFT AND ASSOCIATED CONTROLS AND SAFETY DEVICES.
- REFER TO ARCHITECTURAL DRAWINGS FOR INSTALLATION OF FLOOR TRIMMS. MOUNT RECEPTABLES TO DECK AS DIRECTED BY OWNER.
- CONDUCTOR FOR MODULAR PRACTICE ROOM COORDINATE EXACT LOCATION WITH TRIMMING DRAWINGS. MAKE ALL FINAL CONNECTIONS AS REQUIRED.
- FOR WORK IN THIS ROOM REFER TO "PART PLAN - AREA E - NOTION - POWER ON SHEET E201."
- COORDINATE WITH PLUMBING CONTRACTOR FOR EXACT LOCATION OF DRINKING FOUNTAIN RECEPTABLE PRIOR TO ROOMS.
- FOR WORK IN THIS ROOM REFER TO "PART PLAN - REF. E-1 - POWER AND SPECIAL SYSTEMS PLAN" ON SHEET E201.
- PROVIDE 1-PHASE 50 AMP 2-PHASE PULSED SAFETY SWITCH WITH FUSE AS REQUIRED. MAKE ALL FINAL CONNECTIONS TO TEMPORARY HOLES.
- PROVIDE 1-PHASE 50 AMP 2-PHASE PULSED SAFETY SWITCH WITH FUSE AS REQUIRED IN IT CONDUCTED FROM 3-PHASE CIRCUIT BREAKER IN EXISTING PANEL. SEE E201.
- PROVIDE DISCONNECT SWITCH AND MAKE ALL FINAL CONNECTIONS TO 1-PHASE CIRCULAR MOTOR. 240 VOLTS, 3-PHASE, 10HP. PROVIDE PIPING AS DIRECTED BY MOTOR OPERATOR. MAKE ALL FINAL CONNECTIONS TO 1-PHASE AND 3-PHASE. PROVIDE WITH MOTOR OPERATOR.
- INSTALL AND CONDUCT OPERATIONAL STOP PULSED SAFETY SWITCH PROVIDED WITH MAIN CURTAIN OPERATOR. MAKE ALL FINAL CONNECTIONS AS REQUIRED.
- PROVIDE UNIT POWER BY OUTDOOR UNIT. MAKE ALL FINAL CONNECTIONS TO 1-PHASE AND 3-PHASE ON ROOF. EXTERNALLY MOUNTED CONDENSATE PUMP PROVIDED POWERED FROM ROOM UNIT. MAKE FINAL CONNECTIONS AS REQUIRED.

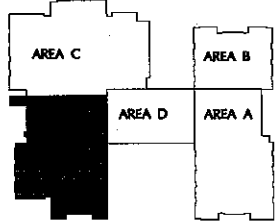
CIRCUIT DESIGNATION SCHEDULE

CIRCUIT	PANEL DESIGNATION
E1	FACE1
E2	FACE2
E3	FACE3
E4	FACE4
E5	FACE5
E6	FACE6
E7	FACE7
E8	FACE8
E9	FACE9
E10	FACE10

SCHEDULE OF MECHANICAL EQUIPMENT CONNECTIONS - AREA E

CONNECTION NO.	VOLTS - PHASE	ELECTRICAL CAPACITIES			DEVICE	CIRCUIT NO.
		MOTOR (HP)	HEAT (KW)	FLA		
F1U E-1	277V-1Ø	1/2	-	3.5	Ø 200	N/E18-17
F1U E-2	277V-1Ø	1/2	-	0.5	Ø 200	N/E18-18
F1U E-3	277V-1Ø	1/2	-	3.5	Ø 200	N/E18-21
F1U E-4	277V-1Ø	1/2	-	3.5	Ø 200	N/E18-23
F1U E-5	277V-1Ø	1/2	-	3.5	Ø 200	N/E18-24
F1U E-6	277V-1Ø	1/2	-	3.5	Ø 200	N/E18-25
F1U E-7	277V-1Ø	1/2	-	7	Ø 200	N/E18-26
F1U E-8	277V-1Ø	1/2	-	3.5	Ø 200	N/E18-28
F1U E-9	277V-1Ø	1/2	-	3.5	Ø 200	N/E18-31
F1U E-10	277V-1Ø	1/2	-	3.5	Ø 200	N/E18-34
CH-1	120V-1Ø	1/3	-	7	Ø 200	F1E18-23
CH-2	120V-1Ø	1/3	-	7	Ø 200	N/E18-23
F0116	208V-1Ø	-	-	0.20	Ø	
W-7	277V-1Ø	1/2	-	2	Ø 200	N/E18-7
ELM1E	480V-3Ø	-	-	8.0	Ø	N/E18-1,2,3,5
ELM1F	480V-3Ø	-	-	8.0	Ø	N/E18-1,2,3,5

1 MAIN LEVEL FLOOR PLAN - AREA E - POWER
1/8" = 1'-0"



ISSUE or REVISION

NO.	DESCRIPTION	DATE
1	CD SUBMISSION	02/08/20
2	FINAL REVIEW	04/07/20
3	RELEASE FOR BIDDING	04/17/20
4	ADDENDUM #2	05/16/20

JOPPATOWNE
RESIDENTIAL SERVICES

PSC NO. 12.046.16LP

BALAJI SWA
ENGINEERS

10000 Greenway Plaza, Suite 210
Columbus, Maryland 21046
410.226.3800
www.balajiswa.com

**JOPPATOWNE HIGH SCHOOL
LIMITED RENOVATION**

555 JOPPA FARM ROAD
JOPPTOWNE, MARYLAND 21085



OWNER/DESIGNER:
**HARFORD COUNTY
PUBLIC SCHOOLS**
102 SOUTH HICKORY AVENUE
BEL AIR, MARYLAND 21038

SHEET TITLE:
**MAIN LEVEL
AREA E - POWER**

SCALE: AS SHOWN

PROFESSIONAL CERTIFICATION:
I, the undersigned, being a duly licensed Professional Engineer in the State of Maryland, do hereby certify that I am the author of and I am a registered professional engineer in the State of Maryland, and I am the holder of the Professional Engineer License No. 10000, State of Maryland, and I am duly qualified to perform the services hereinafter mentioned in accordance with the laws of the State of Maryland.

BCA
Barita Campbell
ARCHITECTS, INC.

18225 Westgate Circle, Suite 210
Columbia, Maryland 21046
410.226.3800
www.bcarc.com

DATE: 04/17/2020
PROJ. NUMBER:
MARK: 10-FI-410
REV: R-004

E205

ELECTRICAL GENERAL NOTES:

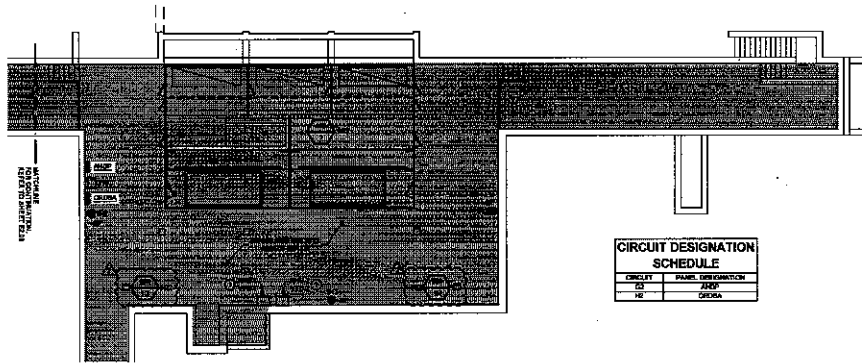
A. REFER TO DRAWING E201 FOR SYMBOLS AND ABBREVIATIONS.

ELECTRICAL DRAWING NOTES: Ⓞ

1. INSTALL AND CONNECT VFD PURCHASED WITH EQUIPMENT. PROVIDE DISCONNECT SWITCH UPSTREAM OF DISCONNECT SWITCH AND MAKE ALL FINAL CONNECTIONS BETWEEN DISCONNECT SWITCH VFD AND MOTOR AS REQUIRED.

ISSUE or REVISION:	
NO.	DATE
02	02/05/20
03	04/02/20
04	04/17/20
05	05/11/20

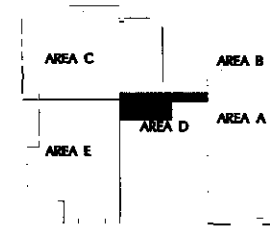
JOPPATOWNE
 PSC NO. 12.046.16LP
BALAJWA



CIRCUIT DESIGNATION SCHEDULE

CIRCUIT	PANEL DESIGNATION
01	200P
02	0200A

LOWER LEVEL FLOOR PLAN - AREA D - POWER



JOPPATOWNE HIGH SCHOOL LIMITED RENOVATION
 555 JOPPA FARM ROAD
 JOPPATOWNE, MARYLAND 21085



OWNER/DEVELOPER:
 HARBOR COUNTY PUBLIC SCHOOLS
 102 SOUTH HICKORY AVENUE
 DEL AIR, MARYLAND 21038

SHEET TITLE:
 LOWER LEVEL
 AREA D - POWER

SCALE: AS SHOWN
 PROFESSIONAL CERTIFICATION:
 I hereby certify that this work was prepared or approved by me, and that I am a duly licensed professional engineer in the State of Maryland, under the State Engineering Law, Article 2-22.

BCA
 Banta Campbell
 ARCHITECTS, INC.
 10221 Westgate Circle, Suite 270
 Columbia, Maryland 21044
 410.270.5000
 www.bantacampbell.com

DATE: 04/17/2020	E2.09
PROJ. NUMBER:	
OWNER: 30-14-410	
SCALE: R-054	

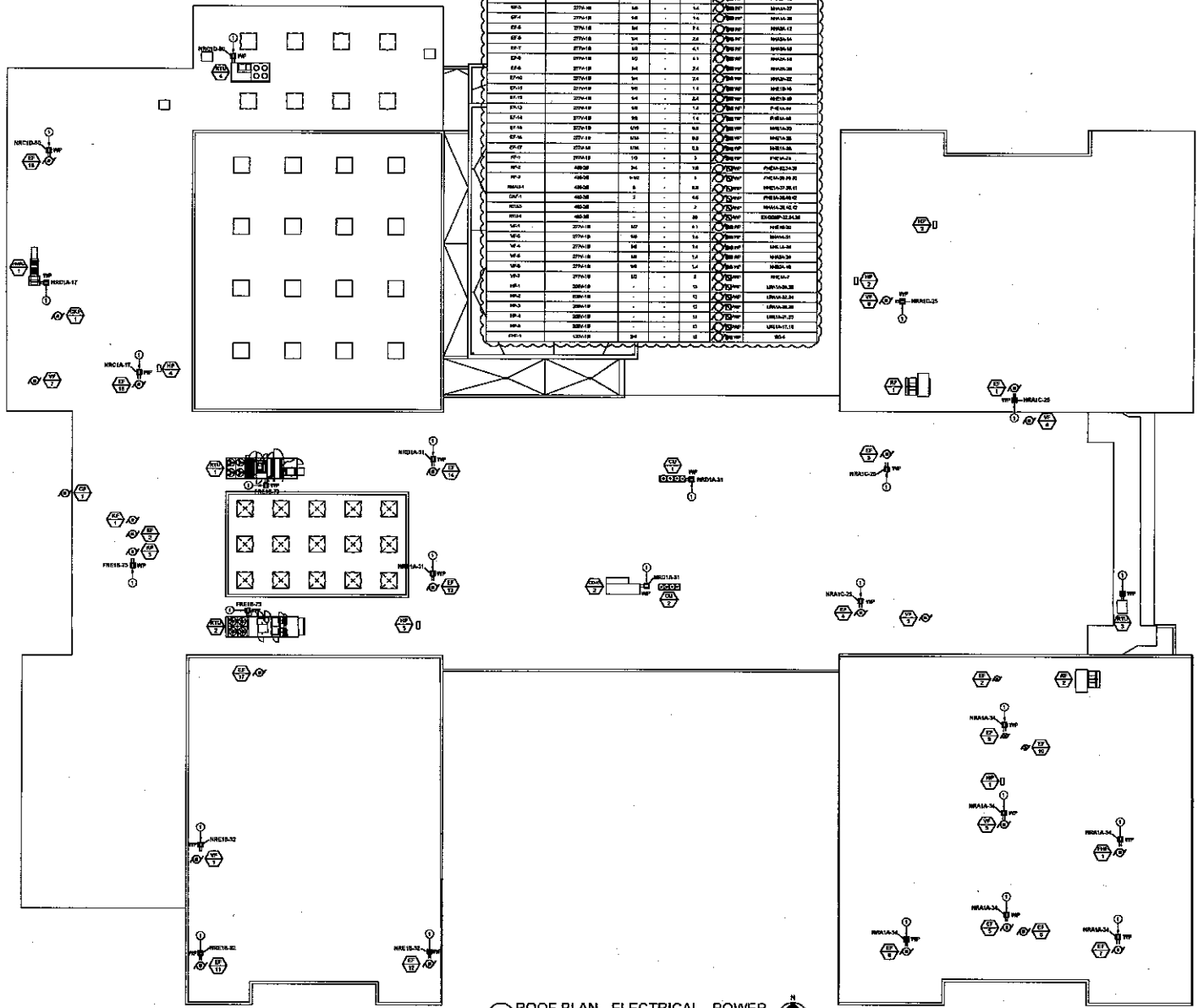
SCHEDULE OF MECHANICAL EQUIPMENT CONNECTIONS - ROOF

CONNECTION NO.	VOLTS - PHASE	ELECTRICAL CAPACITY	DEVICE	CREW NO.
		MINIMUM	MAXIMUM	
ME1	480-3P	-	15	ME1A.1
ME2	480-3P	-	15	ME2A.1
ME3	480-3P	-	15	ME3A.1
ME4	480-3P	-	15	ME4A.1
ME5	480-3P	-	15	ME5A.1
ME6	480-3P	-	15	ME6A.1
ME7	480-3P	-	15	ME7A.1
ME8	480-3P	-	15	ME8A.1
ME9	480-3P	-	15	ME9A.1
ME10	480-3P	-	15	ME10A.1
ME11	480-3P	-	15	ME11A.1
ME12	480-3P	-	15	ME12A.1
ME13	480-3P	-	15	ME13A.1
ME14	480-3P	-	15	ME14A.1
ME15	480-3P	-	15	ME15A.1
ME16	480-3P	-	15	ME16A.1
ME17	480-3P	-	15	ME17A.1
ME18	480-3P	-	15	ME18A.1
ME19	480-3P	-	15	ME19A.1
ME20	480-3P	-	15	ME20A.1
ME21	480-3P	-	15	ME21A.1
ME22	480-3P	-	15	ME22A.1
ME23	480-3P	-	15	ME23A.1
ME24	480-3P	-	15	ME24A.1
ME25	480-3P	-	15	ME25A.1
ME26	480-3P	-	15	ME26A.1
ME27	480-3P	-	15	ME27A.1
ME28	480-3P	-	15	ME28A.1
ME29	480-3P	-	15	ME29A.1
ME30	480-3P	-	15	ME30A.1
ME31	480-3P	-	15	ME31A.1
ME32	480-3P	-	15	ME32A.1
ME33	480-3P	-	15	ME33A.1
ME34	480-3P	-	15	ME34A.1
ME35	480-3P	-	15	ME35A.1
ME36	480-3P	-	15	ME36A.1
ME37	480-3P	-	15	ME37A.1
ME38	480-3P	-	15	ME38A.1
ME39	480-3P	-	15	ME39A.1
ME40	480-3P	-	15	ME40A.1
ME41	480-3P	-	15	ME41A.1
ME42	480-3P	-	15	ME42A.1
ME43	480-3P	-	15	ME43A.1
ME44	480-3P	-	15	ME44A.1
ME45	480-3P	-	15	ME45A.1
ME46	480-3P	-	15	ME46A.1
ME47	480-3P	-	15	ME47A.1
ME48	480-3P	-	15	ME48A.1
ME49	480-3P	-	15	ME49A.1
ME50	480-3P	-	15	ME50A.1
ME51	480-3P	-	15	ME51A.1
ME52	480-3P	-	15	ME52A.1
ME53	480-3P	-	15	ME53A.1
ME54	480-3P	-	15	ME54A.1
ME55	480-3P	-	15	ME55A.1
ME56	480-3P	-	15	ME56A.1
ME57	480-3P	-	15	ME57A.1
ME58	480-3P	-	15	ME58A.1
ME59	480-3P	-	15	ME59A.1
ME60	480-3P	-	15	ME60A.1
ME61	480-3P	-	15	ME61A.1
ME62	480-3P	-	15	ME62A.1
ME63	480-3P	-	15	ME63A.1
ME64	480-3P	-	15	ME64A.1
ME65	480-3P	-	15	ME65A.1
ME66	480-3P	-	15	ME66A.1
ME67	480-3P	-	15	ME67A.1
ME68	480-3P	-	15	ME68A.1
ME69	480-3P	-	15	ME69A.1
ME70	480-3P	-	15	ME70A.1
ME71	480-3P	-	15	ME71A.1
ME72	480-3P	-	15	ME72A.1
ME73	480-3P	-	15	ME73A.1
ME74	480-3P	-	15	ME74A.1
ME75	480-3P	-	15	ME75A.1
ME76	480-3P	-	15	ME76A.1
ME77	480-3P	-	15	ME77A.1
ME78	480-3P	-	15	ME78A.1
ME79	480-3P	-	15	ME79A.1
ME80	480-3P	-	15	ME80A.1
ME81	480-3P	-	15	ME81A.1
ME82	480-3P	-	15	ME82A.1
ME83	480-3P	-	15	ME83A.1
ME84	480-3P	-	15	ME84A.1
ME85	480-3P	-	15	ME85A.1
ME86	480-3P	-	15	ME86A.1
ME87	480-3P	-	15	ME87A.1
ME88	480-3P	-	15	ME88A.1
ME89	480-3P	-	15	ME89A.1
ME90	480-3P	-	15	ME90A.1
ME91	480-3P	-	15	ME91A.1
ME92	480-3P	-	15	ME92A.1
ME93	480-3P	-	15	ME93A.1
ME94	480-3P	-	15	ME94A.1
ME95	480-3P	-	15	ME95A.1
ME96	480-3P	-	15	ME96A.1
ME97	480-3P	-	15	ME97A.1
ME98	480-3P	-	15	ME98A.1
ME99	480-3P	-	15	ME99A.1
ME100	480-3P	-	15	ME100A.1

ELECTRICAL GENERAL NOTES:
 A. REFER TO DRAWING SETS PREVIOUS FOR SYMBOLS AND ABBREVIATIONS.

ELECTRICAL DRAWING NOTES: Ⓞ

1. PROVIDE GROUNDING AND WEATHERPROOF COVER ON ROOF ADJACENT TO MECHANICAL EQUIPMENT. SECURELY MOUNT RECEIPLER ON EQUIPMENT SUPPORT STRUCTURE. TRUCK SUPPORT STRUCTURE SHALL NOT BE USED FOR ELECTRICAL SUPPORT. TRUCK SUPPORT STRUCTURE SHALL NOT BE USED FOR ELECTRICAL SUPPORT. ALL EQUIPMENT SHALL BE MOUNTED TO THE EQUIPMENT MANUFACTURER'S ACCEPTABLE GROUNDING CONNECTIONS. GROUNDING SHALL BE INSTALLED SEPARATE TO GROUNDING EQUIPMENT MANUFACTURER'S GROUNDING DATA. SEAL ALL ATTACHMENT PROVIDING WEATHERPROOF.



1 ROOF PLAN - ELECTRICAL - POWER
 1/8" = 1'-0"

ISSUE OF REVISION:

NO.	DESCRIPTION	DATE
01	ISSUE	03/08/20
02	ADD SUBMISSION	04/02/20
03	FINAL REVIEW	04/02/20
04	RELEASE FOR BIDDING	04/17/20
05	ADDENDUM NO. 2	05/11/20

JOPPATOWNE LIMITED RENOVATION

555 JOPPA FARM ROAD
 JOPPATOWNE, MARYLAND 21085

HARFORD COUNTY PUBLIC SCHOOLS

OWNER/DEVELOPER:
 HARFORD COUNTY PUBLIC SCHOOLS
 100 SOUTH HICKORY AVENUE
 DE. ARL, MARYLAND 21015

SHEET TITLE:
 PARTIAL ROOF PLAN
 ELECTRICAL

SCALE: AS SHOWN

PROFESSIONAL CERTIFICATION:
 I hereby certify that these drawings were prepared or prepared by me, and that I am a duly Licensed Professional Engineer in the State of Maryland, License No. 1076, Expire Date 06/30/2028.

BCA
 Barita Campbell
 ARCHITECTS, INC.
 10221 Wilshire Drive, Suite 210
 Columbia, Maryland 21046
 410.276.2008
 www.bcaarchitects.com

DATE: 04/17/2020
 PROJ. NUMBER:
 10-14-107
 10-354

E2.10

ELECTRICAL GENERAL NOTES:

A. REFER TO DRAWING SET FOR SYMBOLS AND ABBREVIATIONS.

ELECTRICAL DRAWING NOTES: (S)

1. FOR WORK IN THIS AREA REFER TO TV STUDIO LIGHTING PART PLAN IN THIS SET.
2. USE CONTROLLED IMPEDANCE WIRING TO LIGHTS. PLEASANT AND PROTECT ALL WIRING AS DIRECTED BY MANUFACTURERS SHOW SPECIFICATIONS.

ISSUE or REVISION:

NO.	DESCRIPTION	DATE
CD	SUBMISSION	02/03/20
	FINAL REVIEW	04/03/20
	RELEASE FOR BIDDING	04/17/20
1	ADDENDUM NO. 2	05/11/20



PSC NO. 12.046.16LP

BALASWA
ARCHITECTS

JOPPATOWNE HIGH SCHOOL
LIMITED RENOVATION

555 JOPPA FARM ROAD
JOPPTOWNE, MARYLAND 21085



OWNER/DEVELOPER:
HARFORD COUNTY PUBLIC SCHOOLS
102 SOUTH HICKORY AVENUE
DEL AIR, MARYLAND 21034

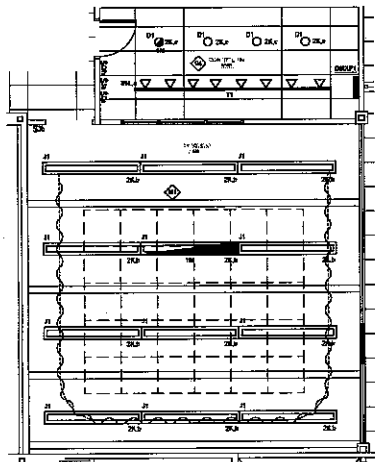
SHEET TITLE:
MAIN LEVEL
AREA B - BASE BID LIGHTING

SCALE: AS SHOWN
PROFESSIONAL CERTIFICATION:
I hereby certify that I am a duly licensed professional architect in the State of Maryland, License No. 15764, and I have prepared the drawings herein for the project shown.

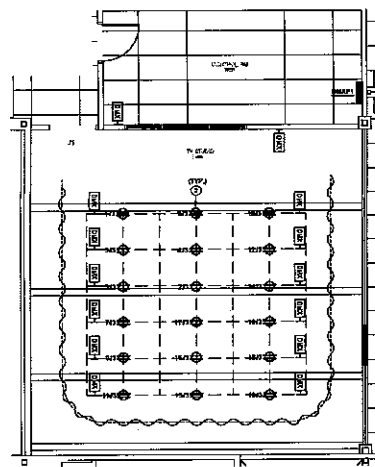
BCA
Banta Campbell
ARCHITECTS, INC.
1929 Henwood Circle, Suite 214
Columbia, Maryland 21046
410.332.9999
www.bccampbell.com

DATE: 04/17/2020
PROJ. NUMBER:
DATE: 10-21-20
BCA: F-354

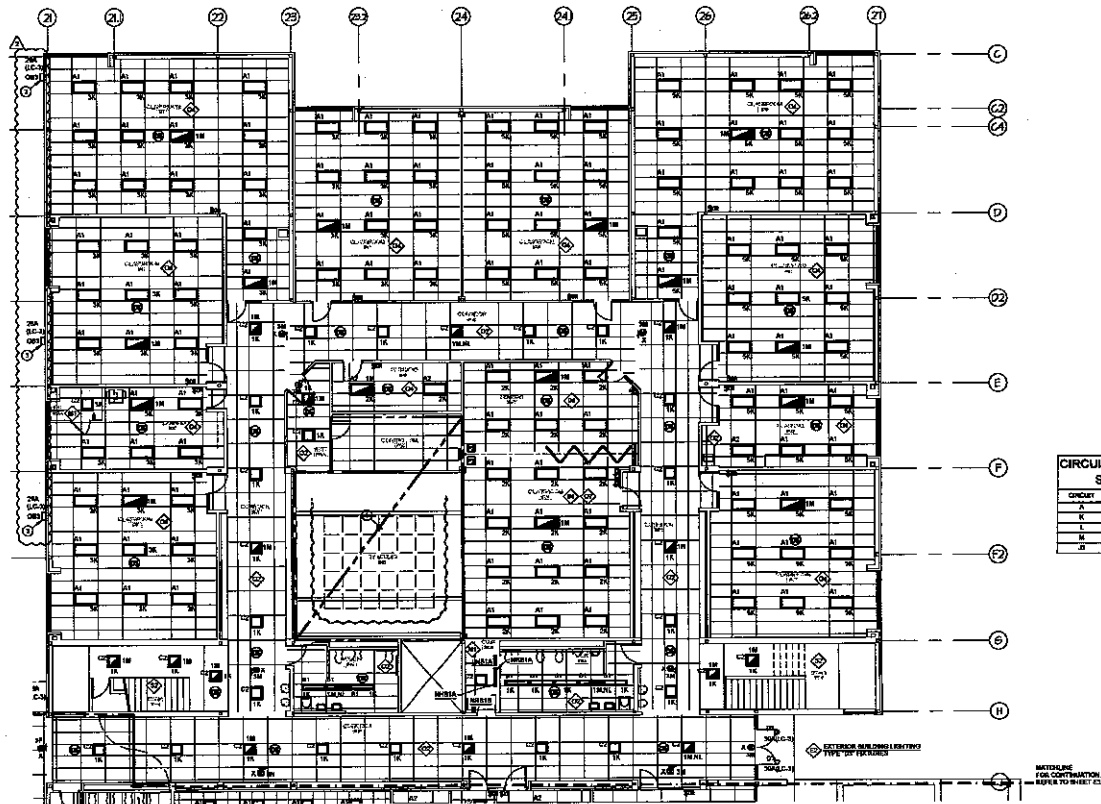
E3.02



2 PART PLAN - TV STUDIO HOUSE LIGHTING AND CONTROL ROOM LIGHTING
1/4" = 1'-0"



1 PART PLAN - TV STUDIO THEATRICAL LIGHTING
1/4" = 1'-0"



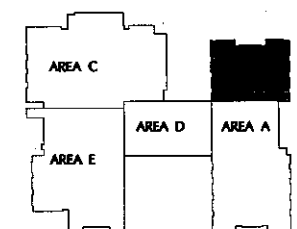
ELV MAIN LEVEL FLOOR PLAN - AREA B - BASE BID LIGHTING
1/8" = 1'-0"

CIRCUIT DESIGNATION SCHEDULE

CIRCUIT	PANEL DESIGNATION
A	TV/VA
B	ME/EA
C	ME/EA
D	ME/EA
E	EMPT

EXTERIOR BUILDING LIGHTING TYPE OF FIXTURES

NOTE: LINE FOR CONTINUATION REFERS TO SHEET E3.01



ISSUE or REVISION		
No.	DESCRIPTION	DATE
00	SUBMISSION	02/08/20
	FINAL REVIEW	04/02/20
	RELEASE FOR BIDDING	04/10/20
1	ADDENDUM NO. 2	05/11/20

JOPPTOWNE
ARCHITECTS, INC.

PSC NO. 12.046.16LP

BALA | SWA
INCORPORATED

**JOPPTOWNE HIGH SCHOOL
LIMITED RENOVATION**

555 JOPPA FARM ROAD
JOPPTOWNE, MARYLAND 21085



OWNER/DEVELOPER:
**HARFORD COUNTY
PUBLIC SCHOOLS**
102 SOUTH HICKORY AVENUE
DEL. AVE., MARYLAND 21038

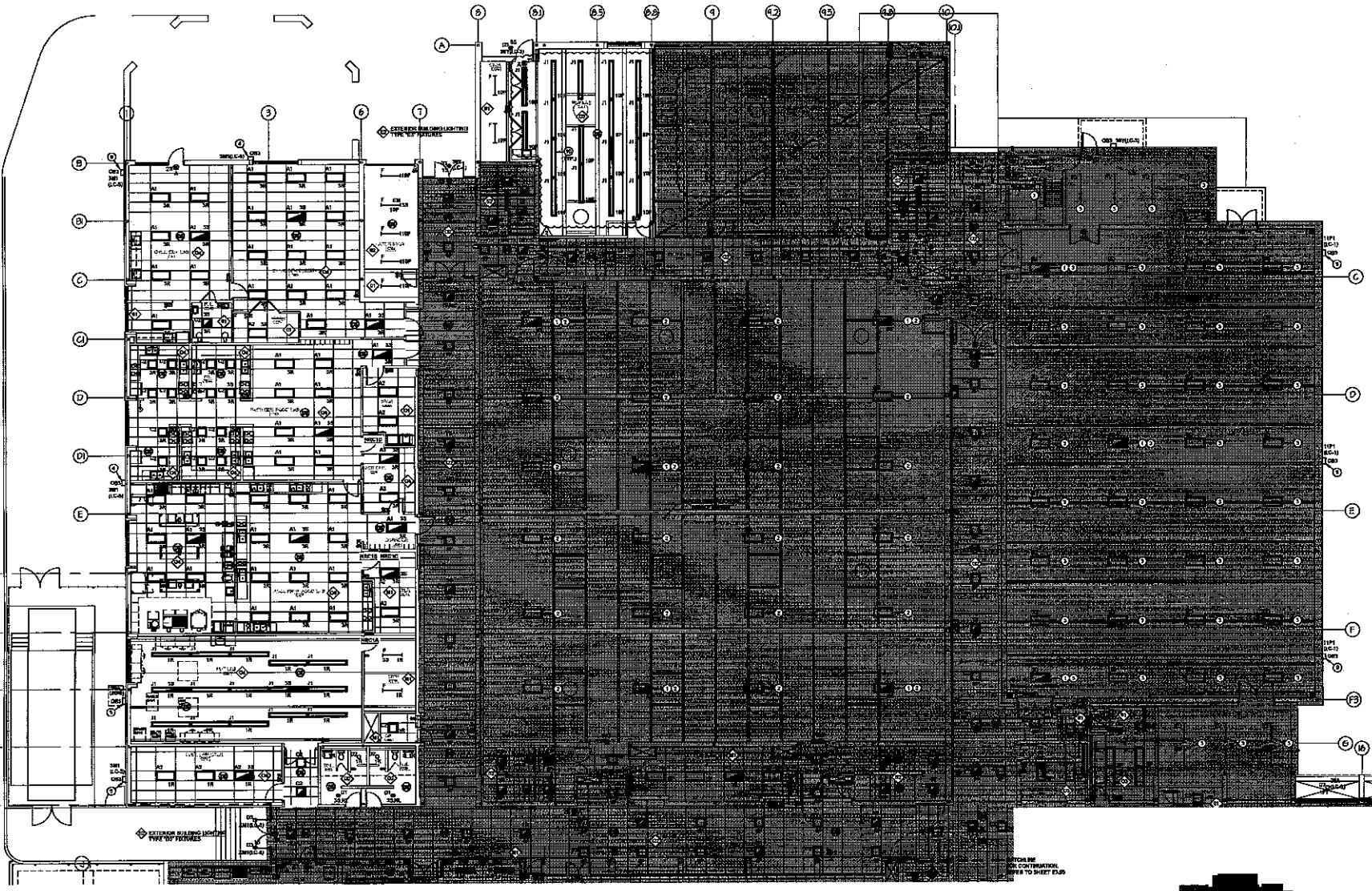
SHEET TITLE:
**MAIN LEVEL
AREA C - BASE BID
LIGHTING**

SCALE: AS SHOWN

PROFESSIONAL CERTIFICATION:
I certify that these documents were prepared or prepared under my direct supervision and under my seal as a duly Licensed Professional Engineer in the State of Maryland, License No. 16246, expiring on 06/30/2025.

BCA
Bartha Campbell
ARCHITECTS, INC.
15221 Veterans Circle, Suite 210
Columbia, Maryland 21044
410.726.0000
www.barthacampbell.com

DATE: 04/11/2020
PROJ. NUMBER:
E3.03
DRAWING TO: R-410
BY: R-204



MAIN LEVEL FLOOR PLAN - AREA C - BASE BID LIGHTING

ELECTRICAL GENERAL NOTES:

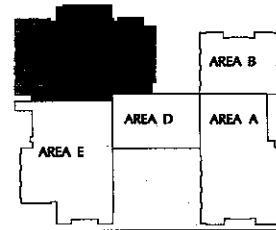
- A. REFER TO DRAWING ELM FOR SYMBOLS AND ABBREVIATIONS.

ELECTRICAL DRAWING NOTES:

1. PROVIDE GENERATION TRANSFER DEVICE IN EXISTING LIGHT FIXTURE FOR EMERGENCY OPERATION.
2. LIGHT FIXTURE SHALL BE CONNECTED TO PANEL FROM EXISTING SWITCHING SCHEME AND CIRCUITING SHALL REMAIN, REFER TO PANEL SCHEDULE ON ELD.
3. LIGHT FIXTURE SHALL REMAIN CONNECTED TO PANEL "TO STAY" EXISTING SWITCHING SCHEME AND CIRCUITING SHALL REMAIN, REFER TO PANEL SCHEDULE ON ELD.
4. RETAIN NEW LIGHT FIXTURE IN SAME LOCATION AS EXISTING LIGHT FIXTURE, CONNECT TO NEW LIGHTING CIRCUIT AS INDICATED.
5. MATCH HEIGHT OF EXISTING WALL FACES.
6. EXISTING LIGHT FIXTURES IF MOUNTED TO CORNER REMOVE EXISTING FINISH AND MOUNT A FINISH IN LOCATION AS INDICATED, SWITCH INDICATING HEIGHT FROM EXISTING FINISHES ON THIS SIDE OF BUILDING.
7. OUTDOOR LIGHTING CONTRACTOR - CONTRACTOR SHALL BE COORDINATED TO BAS. REFER TO SPECIFICATIONS FOR SHORT INFORMATION, MOUNT CONNECTION TO RIGHT SIDE FIELD CONNECTION.
8. FOR WORK IN THIS AREA REFER TO "PART PLAN" MULTIPURPOSE ROOM THEATRICAL LIGHTING ON SHEET E-107.
9. MOUNT FIXTURE SELF-APP.
10. SUSPEND ALL LIGHT FIXTURES AT 8'-0" AFF. WHERE SECTION COLLIDES WITH EXISTING STRUCTURE PROVIDE FRAMED CHANNEL SUPPORTS AS REQUIRED FOR ALL LIGHTS WITH HOOKS TO COORDINATE FUTURE SUSPENSION CABLE WITH EXISTING STRUCTURE.

CIRCUIT DESIGNATION SCHEDULE

CIRCUIT	PANEL	LOAD CONNECTION
0	FREED	
1	FREED	
2	MEDIA	
3	FREED	
4	MEDIA	
5	MEDIA	
6	MEDIA	
7	EL COMP	
8	ELEPH	
9	ELCOMP	
10	MEDIA	
11	MEDIA	
12	MEDIA	



ISSUE or REVISION:

NO.	DESCRIPTION	DATE
	CD SUBMISSION	02/09/20
	FINAL REVIEW	04/02/20
	RELEASE FOR BIDDING	04/17/20
1	ADDENDUM NO. 2	05/11/20

JOPPATOWNE
 LIMITED RENOVATION
 PSC NO. 12.046.16LP
BALAJI SW
 ENGINEERS

JOPPATOWNE HIGH SCHOOL LIMITED RENOVATION
 555 JOPPA FARM ROAD
 JOPPTOWNE, MARYLAND 21085



OWNER/SLOPE:
HARFORD COUNTY PUBLIC SCHOOLS
 102 SOUTH HICKORY AVENUE
 DEL MAR, MARYLAND 21038

SHEET TITLE:
MAIN LEVEL AREA E - BASE BID LIGHTING

SCALE: AS SHOWN
 PROFESSIONAL CERTIFICATION:
 I hereby certify that I am a duly licensed and registered Professional Engineer in the State of Maryland, and that I am the author of the design shown on this drawing.

BCA
 Santa Campbell
 ARCHITECTS, INC.
 1823 Waverly Oaks, Suite 218
 Columbia, Maryland 21046
 410.729.9999
 www.bcasanta.com

DATE: 04/17/2020
 PROJ. NUMBER: **E3.05**
 DRAWN: TD-PR-410
 CHECK: PR-024

ELECTRICAL GENERAL NOTES:

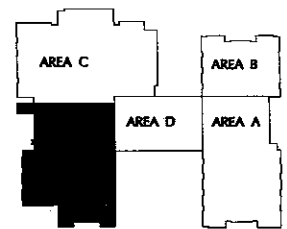
- A. REFER TO DRAWING FOR SYMBOLS AND ABREVIATIONS.

ELECTRICAL DRAWING NOTES:

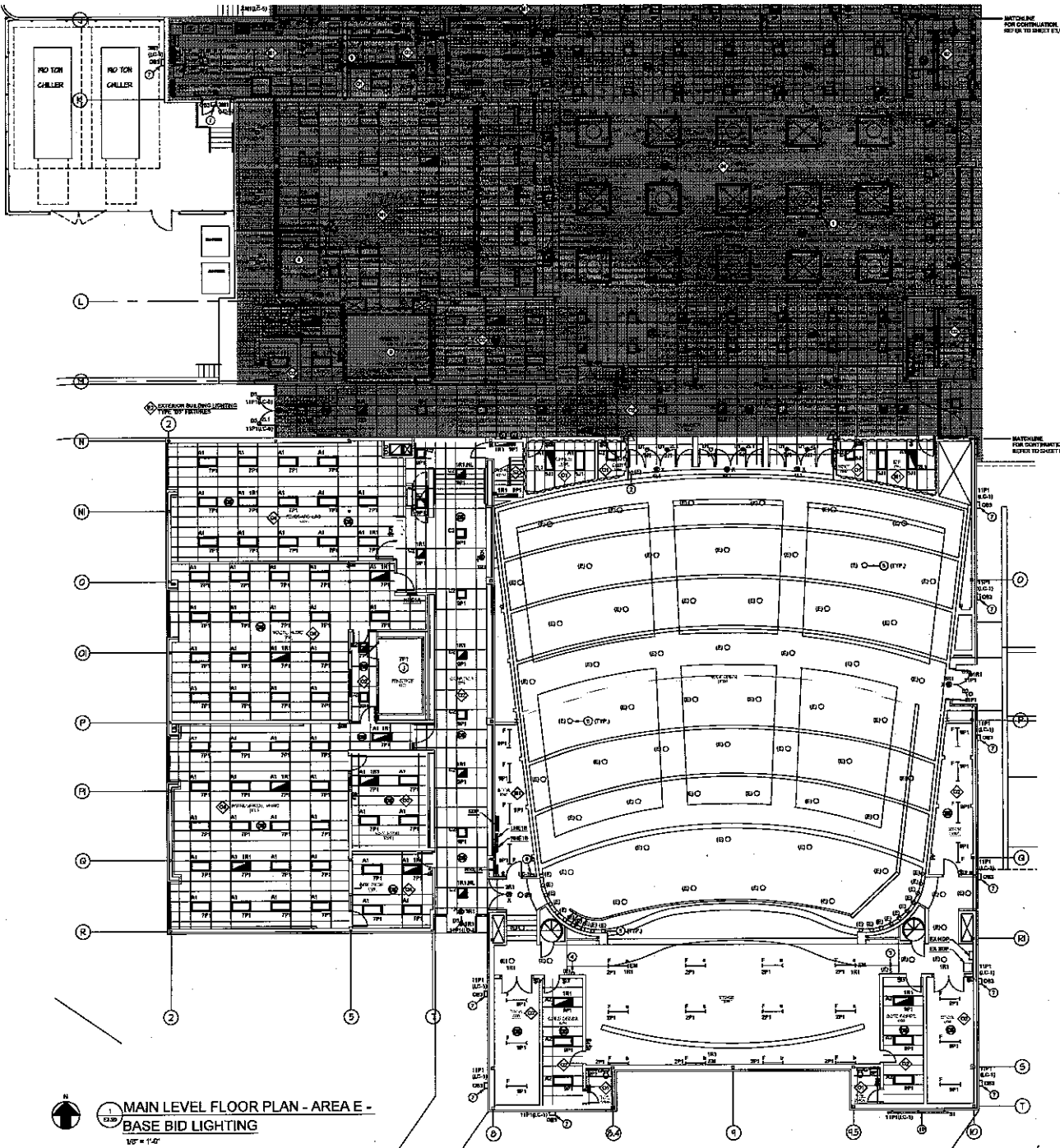
- 1. REFER TO LIGHT FIXTURE MOUNTING AT LIGHT TYPE DETAIL ON DLS1
- 2. EXISTING HOLES UNDER CONTROLS TO REMAIN.
- 3. EXISTING HOLES UNDER CONTROLS TO REMAIN.
- 4. EXISTING HOLES UNDER CONTROLS TO REMAIN.
- 5. EXISTING HOLES UNDER CONTROLS TO REMAIN.
- 6. EXISTING HOLES UNDER CONTROLS TO REMAIN.
- 7. MOUNT FEATURE AT 36" AFF.
- 8. REFER TO SHEET E-301 AND CUMMANY NOTES FOR LIGHTING INFORMATION IN DOORS.
- 9. REFER TO SHEET E-301 AND CUMMANY NOTES FOR LIGHTING INFORMATION IN DOORS.
- 10. MOUNT FEATURE 3" BELOW THE LETTER "F" IN SIGN ARE CONTAINED ON SIGN.

CIRCUIT DESIGNATION SCHEDULE

CIRCUIT	PANEL DESIGNATION
1	AREA A
2	AREA B
3	AREA C
4	AREA D
5	AREA E
6	AREA F
7	AREA G
8	AREA H
9	AREA I
10	AREA J
11	AREA K
12	AREA L



MAIN LEVEL FLOOR PLAN - AREA E - BASE BID LIGHTING
 1/8" = 1'-0"



ISSUE or REVISION		
NO.	DESCRIPTION	DATE
00	SUBMISSION	02/08/20
	FINAL REVIEW	04/09/20
	RELEASE FOR BIDDING	04/10/20
1	ADDENDUM NO. 2	05/11/20

JOPPATOWNE
ARCHITECTS & INTERIORS, P.C.
PSC NO. 12.046.16LP
BALA STAR
CONSTRUCTION

**JOPPATOWNE HIGH SCHOOL
LIMITED RENOVATION**
555 JOPPA FARM ROAD
JOPPATOWNE, MARYLAND 21085

**HARFORD COUNTY
PUBLIC SCHOOLS**

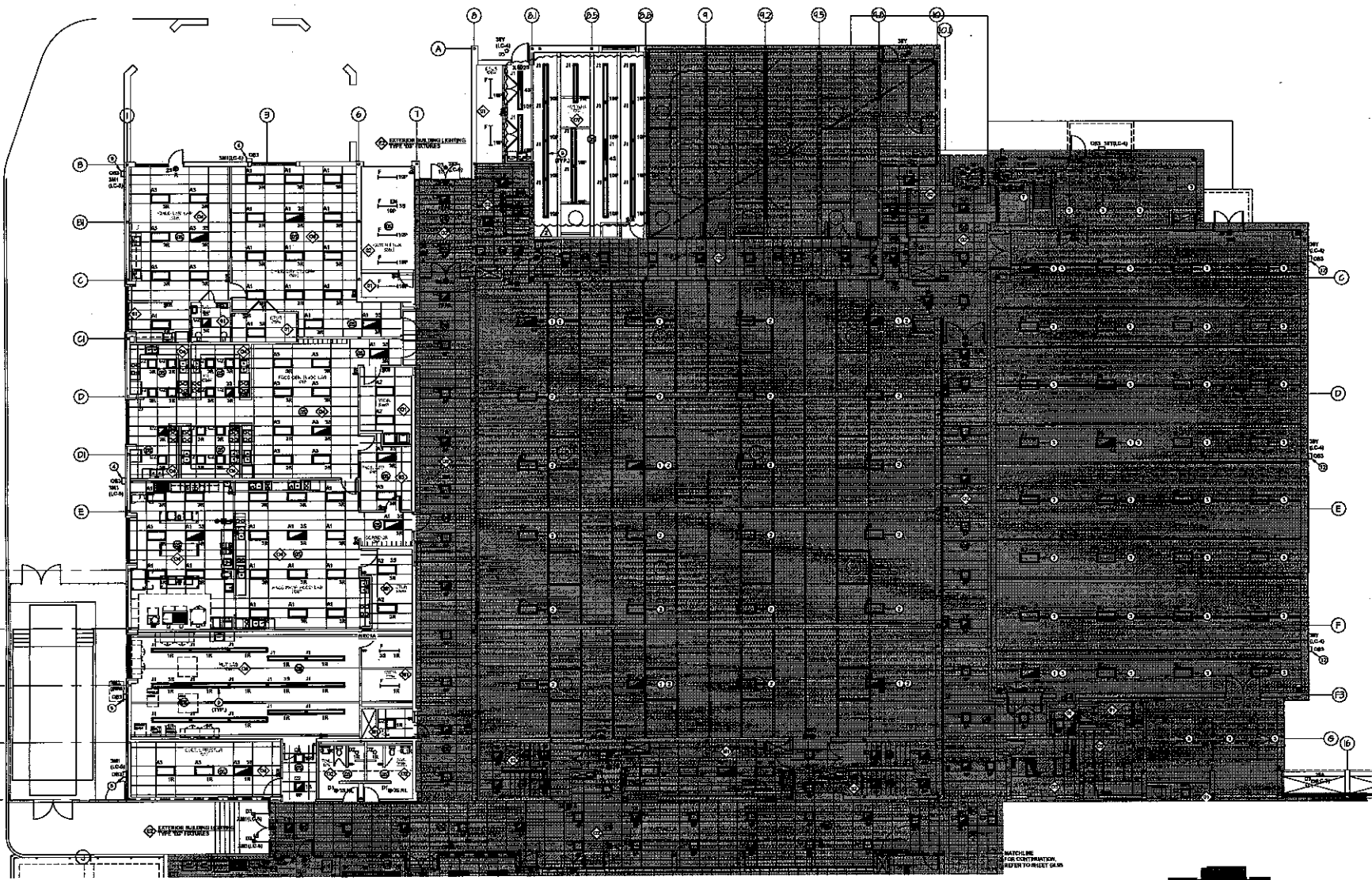
OWNER/OWNER:
HARFORD COUNTY
PUBLIC SCHOOLS
102 SOUTH HENRY AVENUE
BEL AIR, MARYLAND 21034

SHEET TITLE:
MAIN LEVEL
AREA C - ADD
ALTERNATE LIGHTING

SCALE: AS SHOWN
PROFESSIONAL CERTIFICATION:
I, the undersigned, being a duly licensed Professional Engineer in the State of Maryland, do hereby certify that I am the author of and I prepared the design of the above described project and I am a duly Licensed Professional Engineer in the State of Maryland, License No. 19997, Expiration Date: January 1, 2022.

BCA
Barita Campbell
ARCHITECTS, INC.
10223 Ellerslie Court, Suite 210
Columbia, Maryland 21044
410.324.3000
www.bcaarchitects.com

DATE: 04/10/2020
PROJ. NUMBER:
REVISION: 10-24-20
REVISION: R-054



MAIN LEVEL FLOOR PLAN - AREA C - ADD ALTERNATE LIGHTING

ELECTRICAL GENERAL NOTES:
A. REFER TO DRAWINGS FOR SYMBOLS AND ABBREVIATIONS.

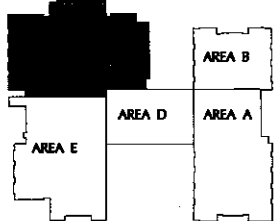
ELECTRICAL DRAWING NOTES:

1. PROVIDE CONDUIT TRANSFER SERVICE IN CEILING LIGHT FIXTURE FOR EMERGENCY OPERATION.
2. LIGHT FIXTURES SHALL BE CONNECTED TO PANEL, EXISTING OR NEW, IN SAME ROOM AND IDENTIFY PANEL NUMBER. REFER TO PANEL SCHEDULE ON E20.
3. LEVY FURNISH SMALL SIGNAL CONNECTED TO PANEL "TEMP" EXISTING OR NEW, IN SAME ROOM AND IDENTIFY PANEL NUMBER. REFER TO PANEL SCHEDULE ON E20.
4. INSTALL NEW LIGHT FIXTURE IN SAME LOCATION AS EXISTING LIGHT FIXTURE. CONNECT TO NEW LIGHTING CIRCUIT AS INDICATED.
5. MATCH HEIGHT OF EXISTING WALL PANELS.
6. EXISTING LIGHT FIXTURE IS MOUNTED TO CORNER. REMOVE EXISTING FIXTURE AND INSTALL FIXTURE IN LOCATION AS INDICATED. MATCH EXISTING HEIGHT WITH EXISTING FIXTURES ON THIS SIDE OF CORNER.
7. OUTDOOR LIGHTING CONTRACTOR SHALL BE CONSULTED BY OWNER. REFER TO SPECIFICATIONS FOR MORE INFORMATION. MOUNT CONTRACTORS TO BEST OF FIELD CONDITIONS.
8. SEE WORK IN THIS AREA REFER TO "PART PLAN, MULTIPURPOSE ROOM THEATRICAL LIGHTING" ON SHEET E47.

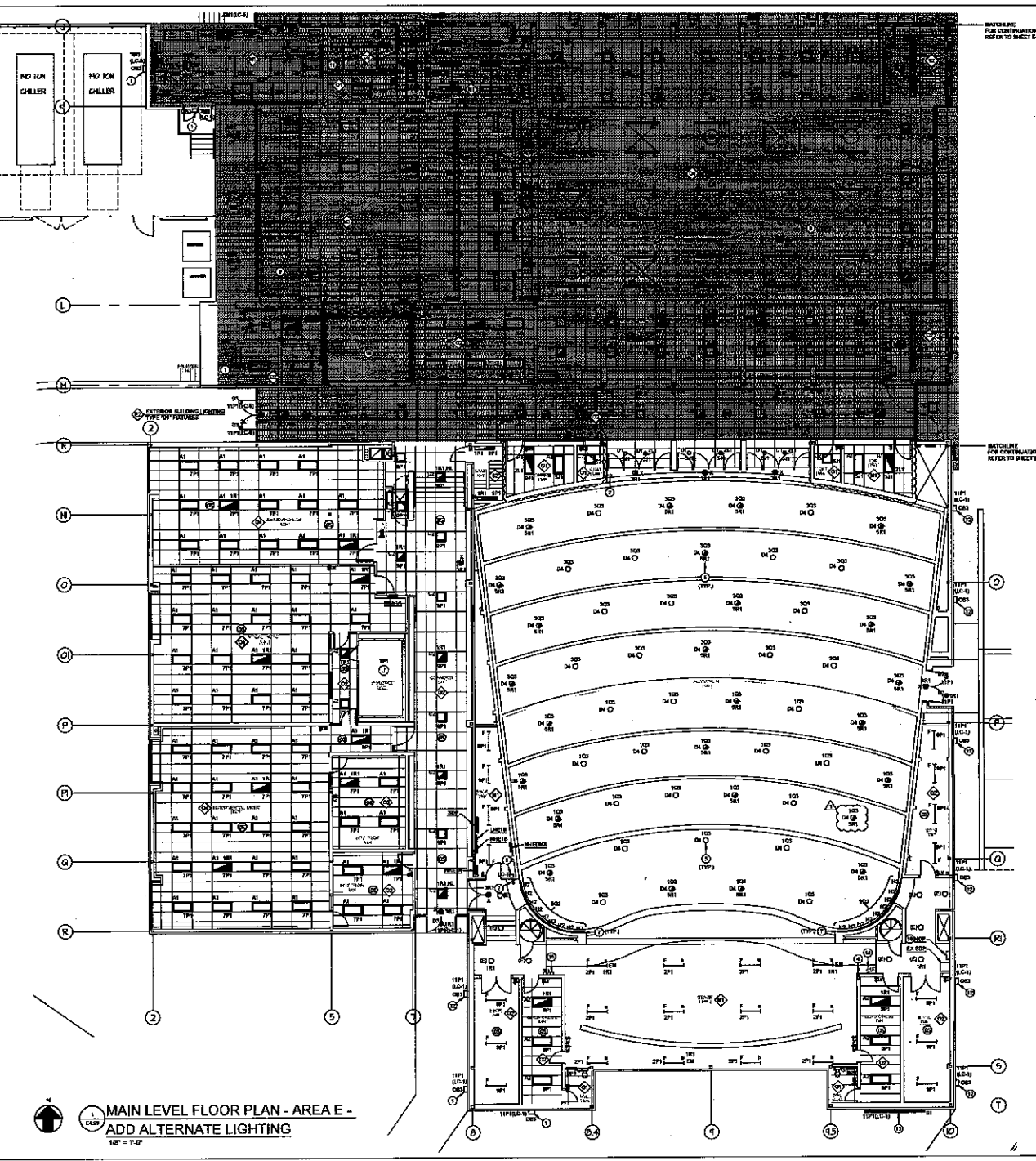
REWORK ALL LIGHT FIXTURES AT IF APPL. WHERE OUTDOOR CONTACTS WITH LIGHT FIXTURES. PROVIDE FINISHING CORNER SUPPORTS AS REQUIRED FOR ALL LIGHTS IN THE ROOM AS INDICATED. IN ADDITION CORNER WITH SHIRT INSTALLATION.

CIRCUIT DESIGNATION SCHEDULE

SYMBOL	PANEL DESIGNATION
W	W-100
B	B-101A
R	R-101B
U	U-101C
Y	Y-101D
X	X-101E
Z	Z-101F
A1	A1-101G
K1	K1-101H
M1	M1-101I
MT	MT-101J



MATCHLINE
SEE CONTINUATION
REFER TO SHEET E48



BOUNDARY FOR CONTINUATION, REFER TO SHEET E-04

BOUNDARY FOR CONTINUATION, REFER TO SHEET E-06

↑ N
MAIN LEVEL FLOOR PLAN - AREA E -
 ADD ALTERNATE LIGHTING
 1/8" = 1'-0"

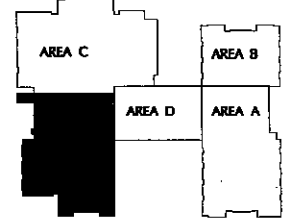
ELECTRICAL GENERAL NOTES:

- A. REFER TO DRAWING E-04 FOR SYMBOLS AND ABBREVIATIONS.
 - B. REFER TO DRAWING E-06 FOR SYMBOLS AND ABBREVIATIONS.
- ELECTRICAL DRAWING NOTES:** Ⓞ
- 1. FURNISHMENTS OF OTHER TRADES SHALL BE SHOWN FOR REFERENCE ONLY. THE CONTRACTOR SHALL BE RESPONSIBLE FOR THE CORRECT INSTALLATION AND OPERATION OF SUCH FURNISHMENTS.
 - 2. PROVIDE NEUTRAL AND GROUNDING SERVICE TO ALL NEW AND EXISTING LIGHTING FIXTURES. THE NEUTRAL SHALL BE WIRE BUNDLED IN THE SAME RACEWAY OR CONDUIT WITH THE LINE WIRE.
 - 3. PROVIDE NEUTRAL AND GROUNDING SERVICE TO ALL NEW AND EXISTING LIGHTING FIXTURES. THE NEUTRAL SHALL BE WIRE BUNDLED IN THE SAME RACEWAY OR CONDUIT WITH THE LINE WIRE.
 - 4. PROVIDE NEUTRAL AND GROUNDING SERVICE TO ALL NEW AND EXISTING LIGHTING FIXTURES. THE NEUTRAL SHALL BE WIRE BUNDLED IN THE SAME RACEWAY OR CONDUIT WITH THE LINE WIRE.
 - 5. PROVIDE NEUTRAL AND GROUNDING SERVICE TO ALL NEW AND EXISTING LIGHTING FIXTURES. THE NEUTRAL SHALL BE WIRE BUNDLED IN THE SAME RACEWAY OR CONDUIT WITH THE LINE WIRE.

REFER TO SHEET E-04 AND E-05 FOR LIGHTING CONTROL SCHEMATIC AND WIRING. REFER TO SHEET E-04 AND E-05 FOR LIGHTING CONTROL SCHEMATIC AND WIRING. REFER TO SHEET E-04 AND E-05 FOR LIGHTING CONTROL SCHEMATIC AND WIRING.

CIRCUIT DESIGNATION SCHEDULE

CIRCUIT	PANEL DISCRIMINATION
1	150 TON CHILLER
2	150 TON CHILLER
3	150 TON CHILLER
4	150 TON CHILLER
5	150 TON CHILLER
6	150 TON CHILLER
7	150 TON CHILLER
8	150 TON CHILLER
9	150 TON CHILLER
10	150 TON CHILLER
11	150 TON CHILLER
12	150 TON CHILLER
13	150 TON CHILLER
14	150 TON CHILLER
15	150 TON CHILLER
16	150 TON CHILLER
17	150 TON CHILLER
18	150 TON CHILLER
19	150 TON CHILLER
20	150 TON CHILLER
21	150 TON CHILLER
22	150 TON CHILLER
23	150 TON CHILLER
24	150 TON CHILLER
25	150 TON CHILLER
26	150 TON CHILLER
27	150 TON CHILLER
28	150 TON CHILLER
29	150 TON CHILLER
30	150 TON CHILLER
31	150 TON CHILLER
32	150 TON CHILLER
33	150 TON CHILLER
34	150 TON CHILLER
35	150 TON CHILLER
36	150 TON CHILLER
37	150 TON CHILLER
38	150 TON CHILLER
39	150 TON CHILLER
40	150 TON CHILLER
41	150 TON CHILLER
42	150 TON CHILLER
43	150 TON CHILLER
44	150 TON CHILLER
45	150 TON CHILLER
46	150 TON CHILLER
47	150 TON CHILLER
48	150 TON CHILLER
49	150 TON CHILLER
50	150 TON CHILLER
51	150 TON CHILLER
52	150 TON CHILLER
53	150 TON CHILLER
54	150 TON CHILLER
55	150 TON CHILLER
56	150 TON CHILLER
57	150 TON CHILLER
58	150 TON CHILLER
59	150 TON CHILLER
60	150 TON CHILLER
61	150 TON CHILLER
62	150 TON CHILLER
63	150 TON CHILLER
64	150 TON CHILLER
65	150 TON CHILLER
66	150 TON CHILLER
67	150 TON CHILLER
68	150 TON CHILLER
69	150 TON CHILLER
70	150 TON CHILLER
71	150 TON CHILLER
72	150 TON CHILLER
73	150 TON CHILLER
74	150 TON CHILLER
75	150 TON CHILLER
76	150 TON CHILLER
77	150 TON CHILLER
78	150 TON CHILLER
79	150 TON CHILLER
80	150 TON CHILLER
81	150 TON CHILLER
82	150 TON CHILLER
83	150 TON CHILLER
84	150 TON CHILLER
85	150 TON CHILLER
86	150 TON CHILLER
87	150 TON CHILLER
88	150 TON CHILLER
89	150 TON CHILLER
90	150 TON CHILLER
91	150 TON CHILLER
92	150 TON CHILLER
93	150 TON CHILLER
94	150 TON CHILLER
95	150 TON CHILLER
96	150 TON CHILLER
97	150 TON CHILLER
98	150 TON CHILLER
99	150 TON CHILLER
100	150 TON CHILLER



ISSUE or REVISION:

NO.	DESCRIPTION	DATE
1	CD SUBMISSION	02/01/2020
2	FINAL REVIEW	04/02/2020
3	RELEASE FOR BIDDING	04/17/2020
4	ADDENDUM NO. 2	05/11/2020

JOPPATOWNE
 PSC NO. 12.046.16LP
BALA SVA
 ARCHITECTS

**JOPPATOWNE HIGH SCHOOL
 LIMITED RENOVATION**
 555 JOPPA FARM ROAD
 JOPPATOWNE, MARYLAND 21085

HARFORD COUNTY PUBLIC SCHOOLS

OWNER/DEVELOPER:
HARFORD COUNTY PUBLIC SCHOOLS
 100 SOUTH HICKORY AVENUE
 DEL. AIR, MARYLAND 21039

SHEET TITLE:
MAIN LEVEL AREA E - ADD ALTERNATE LIGHTING

SCALE: AS SHOWN
 PROFESSIONAL CERTIFICATION:
 I certify that these drawings were prepared or designed by me or that I am a duly licensed engineer and I am the Engineer of Record. I issue this CERTIFICATE on the date shown below.
 Date: 04/17/2020

BCA
 Banta Campbell
 ARCHITECTS, INC.
 10229 Universal Court, Suite 219
 Columbia, Maryland 21044
 410.736.0000
 www.bantacampbell.com

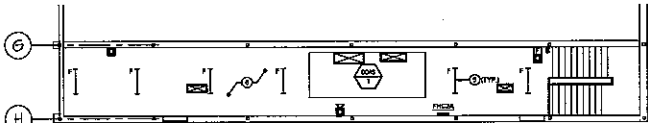
DATE: 04/17/2020

PROJ. NUMBER: **E4.05**

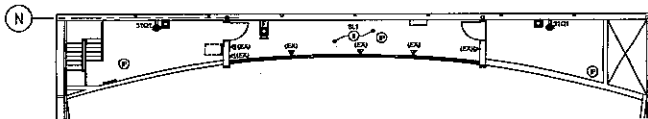
TEAM: 10-11-410
 11-554

SCHEDULE OF MECHANICAL EQUIPMENT CONNECTIONS - BOILER ROOM

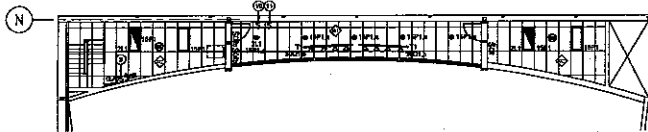
CONNECTION NO.	VOLTS - PHASE	ELECTRICAL CAPACITIES			DEVICE	CIRCUIT NO.
		MOTOR AMP.	HEAT DWT	FLA		
B-1	120V-3Ø	-	-	3	Ø3m	QRES2-2
B-2	120V-3Ø	-	-	3	Ø3m	QRES3-1
B-3	120V-3Ø	-	-	3	Ø3m	QRES3-4
B-4	120V-3Ø	-	-	3	Ø3m	QRES4-4
B-1	480V-3Ø	25	-	34	Ø3m	SDP-3
B-2	480V-3Ø	-	-	36	Ø3m	SDP-4
B-3	480V-3Ø	25	-	36	Ø3m	SDP-5
B-4	480V-3Ø	25	-	34	Ø3m	SDP-6
DMH-1	277V-3Ø	-	-	1	Ø3m	SDP-8
DMH-2	277V-3Ø	-	-	1	Ø3m	SDP-9
NMRP-1	277V-3Ø	12	-	3.5	Ø3m	SDP-9
TMR-1	120V-1Ø	-	-	8A	Ø3m	QRES3-8
QRES-1	120V-1Ø	-	-	1	Ø3m	QRES3-11
QRES-2	120V-1Ø	-	-	1	Ø3m	QRES3-12
QRES-3	120V-1Ø	-	-	1	Ø3m	QRES3-13
ES-1H	480V-3Ø	-	-	50	Ø3m	SDP-7
ES-1B	480V-3Ø	-	-	50	Ø3m	SDP-7
ES-1C	480V-3Ø	-	-	50	Ø3m	SDP-7
ES-1D	480V-3Ø	-	-	50	Ø3m	SDP-7
ES-1E	480V-3Ø	-	-	50	Ø3m	SDP-7
ES-1F	480V-3Ø	-	-	50	Ø3m	SDP-7
ES-1G	480V-3Ø	-	-	50	Ø3m	SDP-7
ES-1H	480V-3Ø	-	-	50	Ø3m	SDP-7
ES-1I	480V-3Ø	-	-	50	Ø3m	SDP-7
ES-1J	480V-3Ø	-	-	50	Ø3m	SDP-7
ES-1K	480V-3Ø	-	-	50	Ø3m	SDP-7
ES-1L	480V-3Ø	-	-	50	Ø3m	SDP-7
ES-1M	480V-3Ø	-	-	50	Ø3m	SDP-7
ES-1N	480V-3Ø	-	-	50	Ø3m	SDP-7
ES-1O	480V-3Ø	-	-	50	Ø3m	SDP-7
ES-1P	480V-3Ø	-	-	50	Ø3m	SDP-7
ES-1Q	480V-3Ø	-	-	50	Ø3m	SDP-7
ES-1R	480V-3Ø	-	-	50	Ø3m	SDP-7
ES-1S	480V-3Ø	-	-	50	Ø3m	SDP-7
ES-1T	480V-3Ø	-	-	50	Ø3m	SDP-7
ES-1U	480V-3Ø	-	-	50	Ø3m	SDP-7
ES-1V	480V-3Ø	-	-	50	Ø3m	SDP-7
ES-1W	480V-3Ø	-	-	50	Ø3m	SDP-7
ES-1X	480V-3Ø	-	-	50	Ø3m	SDP-7
ES-1Y	480V-3Ø	-	-	50	Ø3m	SDP-7
ES-1Z	480V-3Ø	-	-	50	Ø3m	SDP-7



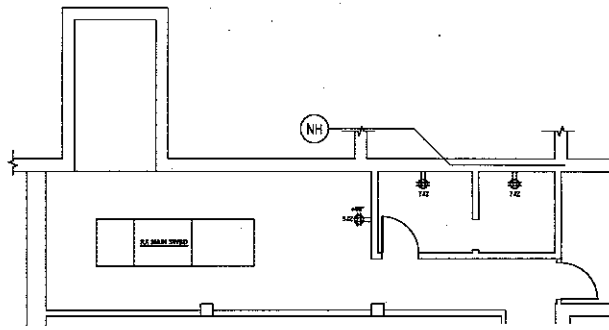
PART PLAN - MAIN GYM MEZZANINE - LIGHTING, POWER AND SPECIAL SYSTEMS



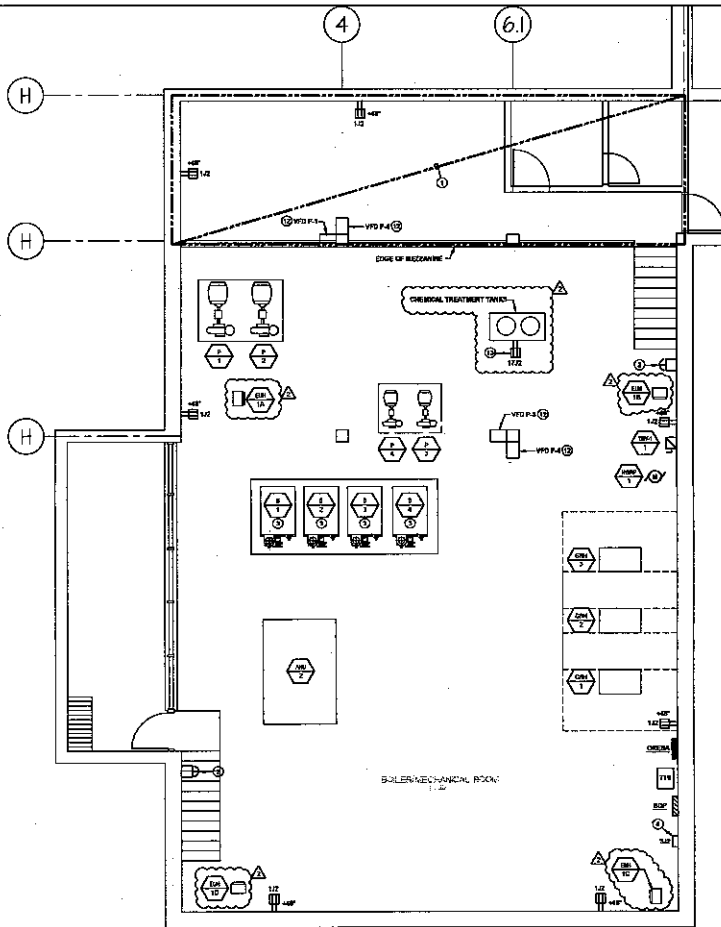
PART PLAN - AUDITORIUM CONTROL ROOM - POWER AND SPECIAL SYSTEMS



PART PLAN - AUDITORIUM CONTROL ROOM - LIGHTING



PART PLAN - BOILER ROOM MEZZANINE - POWER



PART PLAN - BOILER ROOM - POWER

ELECTRICAL GENERAL NOTES:

- REFER TO DRAWING PLAN FOR SYMBOLS AND ASSOCIATIONS.
- FOR ADDITIONAL WORK IN THIS AREA REFER TO PART PLAN - BOILER ROOM MEZZANINE ON THIS SHEET.
- PROVIDE EMERGENCY STOP SWITCH FOR SHUTDOWN OF BOILER/ALU. & S.A. MAKE ALL FINAL CONNECTIONS TO BOILER CONTROL PANELS FOR SHUTDOWN ACTIVATION.
- PROVIDE SHUTDOWN SWITCH WITH PROVISIONS FOR LOCKOUT IN THE OFF POSITION.
- MAN CONTROLLER, COORDINATE UNIT LOCATION WITH MECHANICAL CONTRACTOR.
- COORDINATE FINAL LOCATION OF LIGHT FIXTURES WITH MECHANICAL CONTRACTOR.
- CONNECT EXISTING RECEPTACLES MAIN GYM MEZZANINE TO PANEL. RECEPTACLES REFER TO PANEL SCHEDULE ON SHEET E-6.
- ALL EXISTING RECEPTACLES, AUDITORIUM SOUND SYSTEM, TOGETHER WITH INTERCOM SYSTEM AND PHYSICAL LIGHTING CONTROL SYSTEM EQUIPMENT AND DEVICES SHALL REMAIN. PROTECT AS REQUIRED DURING CONSTRUCTION. EXISTING TELECOMMUNICATION OUTLETS, AS NOTED ON PLAN, SHALL BE RELOCATED PER PLAN.
- EXISTING MAIN AUDITORIUM 6000 SOUND SYSTEM AND ALL ASSOCIATED PERIPHERAL DEVICES TO REMAIN. TO REMAIN. REMOVE EXISTING BRANCH CIRCUIT AS REQUIRED. PROVIDE EMERGENCY POWER BRANCH CIRCUIT AS REQUIRED. PROVIDE FIRE ALARM SYSTEM. PROVIDE FIRE ALARM CONTROL MODULE IN ACCESSIBLE SHED ABOUT 100' FROM MAIN GYM MEZZANINE. PROVIDE FIRE ALARM ACTIVATION OF FIRE ALARM SYSTEM. THE SHED SHALL BE LOCATED IN MAIN GYM MEZZANINE. PROVIDE FIRE ALARM PANEL. PROVIDE FIRE ALARM SYSTEM AS REQUIRED. VERIFY THAT EXISTING SOUND SYSTEM OPERATES PANEL TO FIRST OF EXISTING SYSTEM.
- EXISTING SWITCH FOR CENTRAL LIGHTING TO REMAIN. RECONNECT CENTRAL LIGHTING TO CIRCUIT PANELS-16.
- PROVIDE HOUSE LIGHTING MASTER CONTROL STATION.
- PROVIDE HOUSE LIGHTING KEY LOCKOUT STATION.
- INSTALL AND CONNECT WIRING PUNNETS WITH EQUIPMENT. PROVIDE DISCONNECT SWITCH UPSTREAM OF DISCONNECT SWITCH AND MAKE ALL FINAL CONNECTIONS BETWEEN DISCONNECT SWITCHES AND MOTOR AS REQUIRED.
- PROVIDE RECEPTACLES FOR CHEMICAL TREATMENT TANKS AS DIRECTED BY MECHANICAL CONTRACTOR.

CIRCUIT DESIGNATION SCHEDULE

CIRCUIT NO.	CIRCUIT DESCRIPTION
01	RE-1
02	RE-2
03	RE-3
04	RE-4
05	RE-5
06	RE-6
07	RE-7
08	RE-8
09	RE-9
10	RE-10
11	RE-11
12	RE-12
13	RE-13
14	RE-14
15	RE-15
16	RE-16

ISSUE OF REVISION:

NO.	DESCRIPTION	DATE
01	CD SUBMISSION	02/02/20
	FINAL REVIEW	04/10/20
	RELEASE FOR BIDDING	04/10/20
1	ADDENDUM NO. 2	05/11/20

JOPPATOWNE
CONSULTING ENGINEERS
PSC NO. 12046.16LP
BALASWAMI ENGINEERING

JOPPATOWNE HIGH SCHOOL LIMITED RENOVATION
555 JOPPA FARM ROAD
JOPPATOWNE, MARYLAND 21085

HARFORD COUNTY PUBLIC SCHOOLS

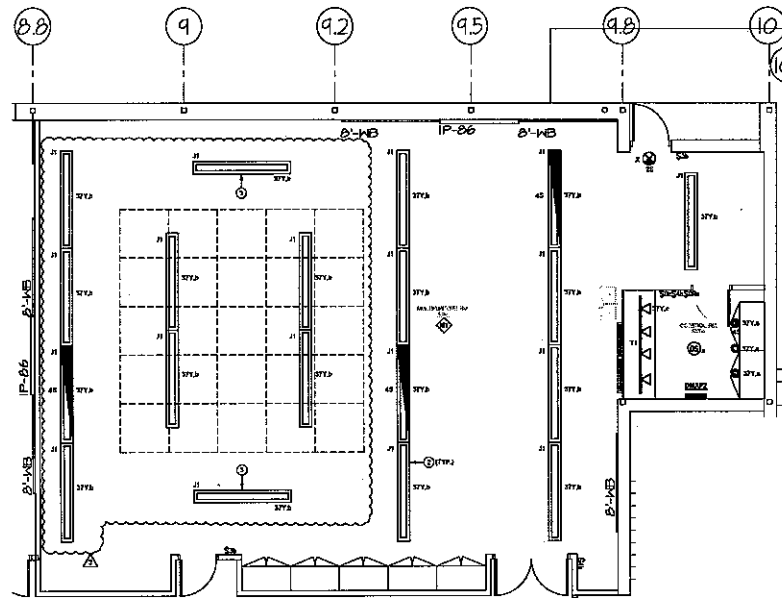
OWNER/DEVELOPER:
HARFORD COUNTY PUBLIC SCHOOLS
100 SOUTH HICKORY AVENUE
DEL AIR, MARYLAND 21038

SHEET TITLE:
ELECTRICAL PART PLANS

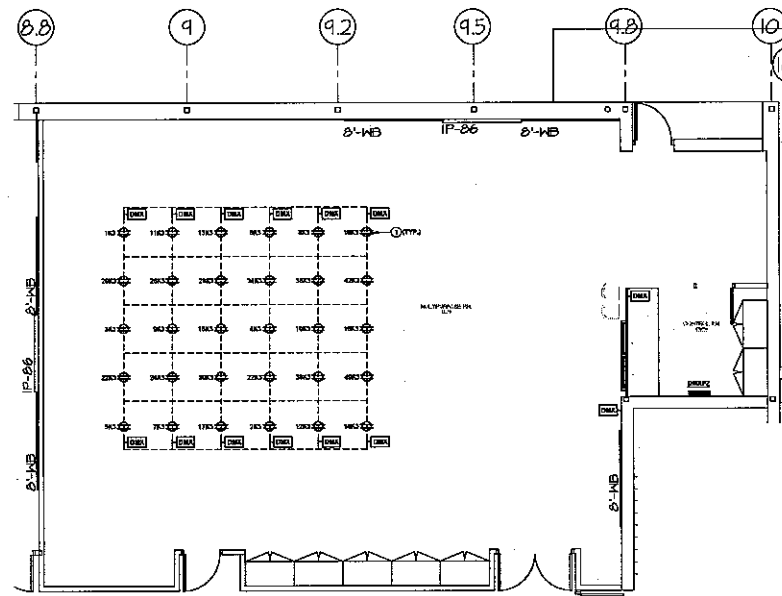
SCALE: AS SHOWN
PROFESSIONAL CERTIFICATIONS:
I hereby certify that I am a duly licensed professional engineer in the State of Maryland, License No. 15676, and that I am the author of the design on this sheet. I am a member of the National Society of Professional Engineers, License No. 15676, and the Maryland Society of Professional Engineers, License No. 15676.

BCA
Barita Campbell
ARCHITECTS, INC.
10251 Telegraph Drive, Suite 219
Columbia, Maryland 21044
410.320.8888
www.baritacampbell.com

DATE: 04/10/2020
PROJ. NUMBER:
SHEET NUMBER: **E6.02**
DRAWN: TO-M-460
CHECK: RE-354



1 PART PLAN - MULTIPURPOSE ROOM HOUSE LIGHTING
1/4" = 1'-0"



2 PART PLAN - MULTIPURPOSE ROOM THEATRICAL LIGHTING
1/4" = 1'-0"

ELECTRICAL GENERAL NOTES:
 A. REFER TO DRAWING UNIT FOR SYMBOLS AND ABBREVIATIONS.

ELECTRICAL DRAWING NOTES:

1. DIMS CONTROLLING DIMENSIONS; MOUNT TO LIGHT FIXTURE AS REQUIRED AND PROVIDE ALL MOUNTING AS DIRECTED BY MANUFACTURER'S SHOP DRAWINGS.
2. MOUNT LIGHT FIXTURES SO THAT BOTTOM OF FIXTURES ARE FLUSH WITH BOTTOM OF BEAMS.
3. CORROBORATE EXACT LOCATION OF FIXTURE WITH OTHERS.

CIRCUIT DESIGNATION SCHEDULE

CIRCUIT	CIRCUIT DESIGNATION	BY GROUP
AC		LIGHTS

ISSUE or REVISION:

NO.	DESCRIPTION	DATE
02	02 ELEMEGICK	02/05/20
	FINAL REVIEW	04/17/20
	RELEASE FOR BIDDING	04/17/20
1	APPENDIX NO. 2	05/11/20

JOPPATOWNE
 PUBLIC SCHOOLS
 PSC NO. 12046.16LP
BALASWA
 ENGINEERS

**JOPPATOWNE HIGH SCHOOL
 LIMITED RENOVATION**
 555 JOPPA FARM ROAD
 JOPPATOWNE, MARYLAND 21085

**HARFORD COUNTY
 PUBLIC SCHOOLS**

OWNER/DEVELOPER:
 HARFORD COUNTY
 PUBLIC SCHOOLS
 102 SOUTH HICKORY AVENUE
 BEL AIR, MARYLAND 21038

SHEET TITLE:
 ELECTRICAL
 PART PLANS

SCALE: AS SHOWN

PROFESSIONAL CERTIFICATION:
 I, the undersigned, being a duly licensed professional engineer, do hereby certify that I am the author of the design and design calculations herein, and that I am a duly licensed professional engineer under the laws of the State of Maryland. My commission expires on 06/30/2024.

BCA
 Banta Campbell
 ARCHITECTS, INC.
 10225 Pikeville Drive, Suite 210
 Columbia, Maryland 21044
 410.329.0000
 www.bantacampbell.com

DATE: 04/17/2020

PROJ. NUMBER:	E6.07
REVISION:	20-21-40
BY:	R-254