



UNITED  
NATIONS

**EP**

UNEP/MED WG.502/Inf.8



UNITED NATIONS  
ENVIRONMENT PROGRAMME  
MEDITERRANEAN ACTION PLAN

UNEP

27 May 2021  
Original: English

Fifteenth Meeting of SPA/BD Focal Points

Videoconference, 23-25 June 2021

**Agenda item 4: Progress report on activities carried out to implement the Biodiversity and Ecosystems core theme since the Fourteenth meeting of SPA/BD Focal Points**

**Pocket identification guide of main vulnerable species incidentally caught in fisheries of Croatia, Italy, Morocco, Tunisia, and Turkey**



Note:

The designations employed and the presentation of the material in this document do not imply the expression of any opinion whatsoever on the part of Specially Protected Areas Regional Activity Centre (SPA/RAC) and United Nations Environment Programme concerning the legal status of any State, Territory, city or area, or of its authorities, or concerning the delimitation of their frontiers or boundaries.





## **Note by the Secretariat**

1. These pocket identification guides have been developed to support the monitoring of bycatch of vulnerable species in Mediterranean fisheries in Croatia, Italy, Morocco, Tunisia, and Turkey.
2. The guides have been produced within the context of the MedBycatch project (Phase 1 and 2) “Understanding Mediterranean multi-taxa ‘bycatch’ of vulnerable species and testing mitigation– a collaborative approach” funded by MAVA Foundation through a partnership between the Agreement on the Conservation of Cetaceans of the Black Sea, Mediterranean Sea and contiguous Atlantic area (ACCOBAMS), the General Fisheries Commission for the Mediterranean (GFCM) of the Food and Agriculture Organization of the United Nations (FAO), the Regional Activity Centre for Specially Protected Areas of the United Nations Environment/Mediterranean Action Plan (SPA/RAC), International Union for Conservation of Nature – Centre for Mediterranean Cooperation (IUCN-Med), BirdLife Europe and Central Asia (BL ECA), the Mediterranean Association to Save the Sea Turtles (MEDASSET) and the Mediterranean World Wildlife Fund (WWF).
3. The compilation and final editing of these guides has been coordinated by IUCN-Med with the support of all the project’ partners and the Mediterranean experts involved within the MedBycatch Project.
4. These guides have been developed to provide the observers on board fishing vessels and fishers with identification assistance and general information about main vulnerable species potentially caught as bycatch in their country and act as a complementary tool to the most comprehensive ID guide of Mediterranean vulnerable species: “Guide of vulnerable species incidentally caught in Mediterranean fisheries” (UNEP/MED WG.502/Inf.7)
5. The present document includes the English version of the:
  - a. Pocket identification guide of main vulnerable species incidentally caught in Croatian fisheries (also available [Croatian](#))
  - b. Pocket identification guide of main vulnerable species incidentally caught in Italian fisheries (also available in [Italian](#))
  - c. Pocket identification guide of main vulnerable species incidentally caught in Moroccan fisheries (also available in [French](#) with Arabic species names)
  - d. Pocket identification guide of main vulnerable species incidentally caught in Tunisian fisheries (also available in [French](#) with Arabic species names)
  - e. Pocket identification guide of main vulnerable species incidentally caught in Turkish fisheries (also available in [Turkish](#))
6. These guides complement the document Monitoring the incidental catch of vulnerable species in Mediterranean and Black Sea fisheries - methodology for data collection (UNEP/MED WG.502/Inf.6)

# POCKET IDENTIFICATION GUIDE OF MAIN VULNERABLE SPECIES INCIDENTALLY CAUGHT IN CROATIAN FISHERIES

Simplified guide adapted for Croatia (GSA 17) from the Identification guide of vulnerable species incidentally caught in Mediterranean fisheries



## MARINE MAMMALS



### *Stenella coeruleoalba*

Striped dolphin /  
prugasti dupin  
Ad: 1.8 – 2.6 m  
NB: 85 – 95 cm



Glo Med



### *Tursiops truncatus*

Common bottlenose dolphin /  
dobri dupin  
♂: 2.5 – 3.9 m  
♀: 2.2 – 3.2 m  
NB: 1 – 1.2 m



Glo Med



## SEABIRDS



Winter

Summer



### *Larus michahellis*

Yellow-legged gull / galeb klaukavac  
Wingspan: 120 – 140 cm

Glo



Winter

Summer



### *Larus audouinii*

Audouin's gull / sredozemni galeb  
W: 117 – 128 cm

Glo



### *Calonectris diomedea*

Scopoli's shearwater / kaukal  
W: 112 – 122 cm

Glo



Winter

Summer



### *Larus ridibundus*

Black-headed gull / riječni galeb  
W: 86 – 99 cm

Glo



## SEABIRDS



Juvenile

Adult

**LC** *Gulosus aristotelis desmarestii*  
European shag / morski vranac (sredozemna podvrsta)  
**Glo** W: 115 – 125 cm



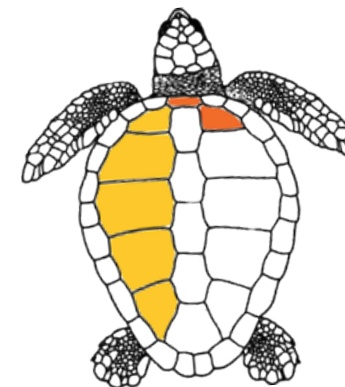
Winter

Summer

**LC** *Thalasseus sandvicensis*  
Sandwich tern / dugokljuna čigra  
**Glo** W: 85 – 97 cm



## SEA TURTLES



**VU** **LC**

**Glo** **Med**



**Caretta caretta**  
Loggerhead turtle / glavata želva  
♂: 75 – 80 cm; ♀: 66 – 85 cm



**LC** *Phalacrocorax carbo*  
Great Cormorant / veliki vranac  
**Glo** W: 77 – 94 cm



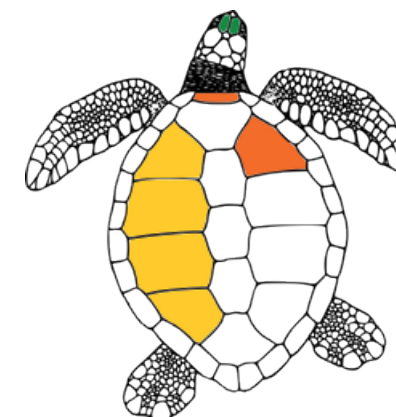
Summer

Winter

**LC** *Sterna hirundo*  
Common tern / crvenokljuna čigra  
**Glo** W: 70 – 80 cm



**VU** *Puffinus yelkouan*  
Yellow-nosed shearwater / gregula  
**Glo** W: 70 – 84 cm



**EN**

**Glo**



**Chelonia mydas**  
Green turtle / zelena želva  
Ad (♂ and ♀): 80 – 120 cm



## CHONDRICHTYANS



***Alopias vulpinus* – ALV**

Common thresher / pas lisica  
Ad: up to 6 m



Glo Med

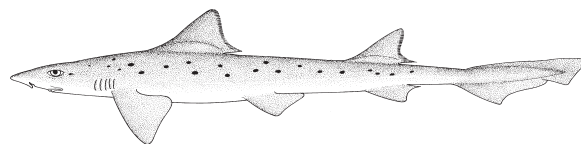


***Isurus oxyrinchus* – SMA**

Shortfin mako / dugonosa psina  
Ad: up to 4.5m



Glo Med



***Mustelus punctulatus* – MPT**

Blackspotted smooth-hound /  
pas mekaš pjegavi  
Ad: up to 1.9 m



Glo Med



***Hexanchus griseus* – SBL**

Bluntnose six-gill shark / volonja  
Ad: up to 5 m



Glo Med



***Galeorhinus galeus* – GAG**

Tope shark / butor  
Ad: up to 1.6m



Glo Med

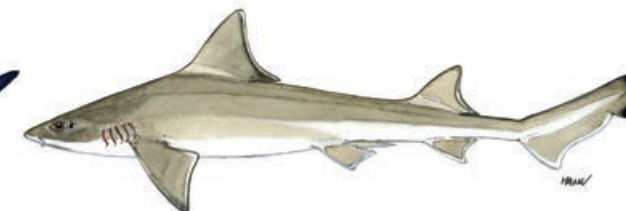


***Prionace glauca* – BSH**

Blue shark / modrulj  
Ad: up to 4 m



Glo Med



***Mustelus mustelus* – SMD**

Smooth-hound / pas mekaš  
Ad: up to 2 m



Glo Med



***Squalus acanthias* – DGS**

Picked dogfish / kostelj piknjavac  
Ad: up to 2 m



Glo Med



***Scyliorhinus canicula* – SYC**

Small-spotted catshark / mačka bljedica  
Ad: up to 1 m (60 cm in Mediterranean)



Glo Med



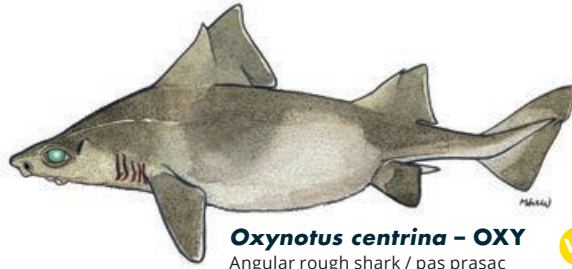
***Cetorhinus maximus* – BSK**

Basking shark / golema psina  
Ad: up to 10 m



Glo Med

## CHONDRICHTYANS



**Oxynotus centrina – OXY**  
Angular rough shark / pas prasac  
Ad: up to 1.5 m

VU CR

Glo Med



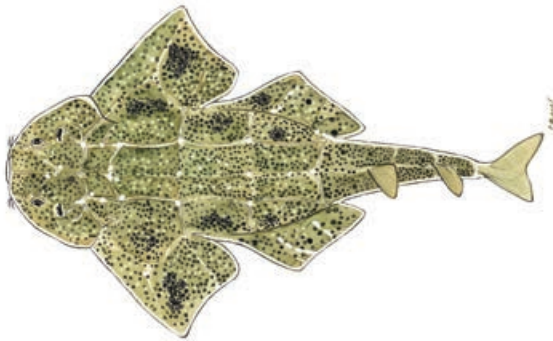
**Raja asterias – JRS**  
Mediterranean starry ray /  
raža zvjezdopjega  
Ad: up to 80 cm in total length

NT NT  
Glo Med



**Raja miraletus – JAI**  
Brown ray / rača modropjega  
Ad: up to 70 cm in total length

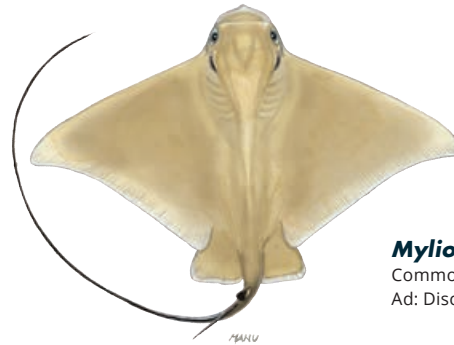
LC LC  
Glo Med



**Squatina squatina – AGN**  
Angelshark / sklat sivac  
Ad: up to 2.5 m total length

CR CR

Glo Med



**Myliobatis aquila – MYL**  
Common eagle ray / golub  
Ad: Disc wide up to 1.5 m

DD VU  
Glo Med



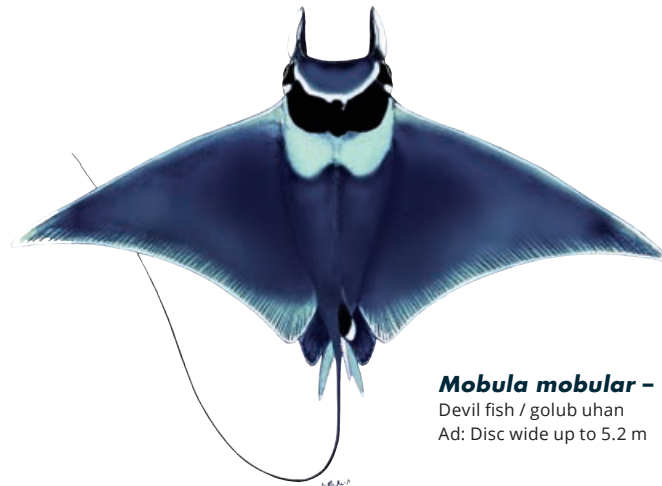
**Dasyatis pastinaca – JDP**  
Common stingray / žutuga  
Ad: Disc wide up to 0.68m

DD VU  
Glo Med



**Raja clavata – RJC**  
Thornback ray / rača kamenica  
Ad: up to 90-130 cm in total length

NT NT  
Glo Med



**Mobula mobular – RMM**  
Devil fish / golub uhan  
Ad: Disc wide up to 5.2 m

EN EN

Glo Med



**Torpedo marmorata – TTR**  
Marbled electric ray / drhtulja  
Ad: up to 1 m in total length

DD LC  
Glo Med



# SPONGES



## Massive keratose sponges – KERA



*Sarcotragus* sp.



*Sarcotragus* sp.



*Hippospongia communis*



*Ircinia variabilis*

## Globular sponges – GLOS



*Suberites domuncula*



*Tethya aurantium*



*Therea* spp.

## Massive Mediterranean stony sponge – PETR



*Petrosia ficiformis* (burgundy morph)



*Petrosia ficiformis* (white morph)

## Lamellate to cup-shaped sponges – LAMS



*Spongia lamella*



*Calyx nicaeensis*

## Arborescent sponges – ARBS



*Axinella* sp.

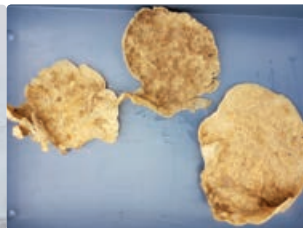


*Axinella cannabina*

## Fan-shaped sponges – FANS



*Phakellia ventilabrum*



*Phakellia robusta*

## Massive, (sub-) spherical hard sponges (*Geodia* spp.) – GEOD



*Geodia cydonium*

## Lamellate rock sponges (*Leiodermatium* sp.) – ROCK



*Leiodermatium pfeifferae*

## Massive-tubular gold sponges (*Aplysina* spp.) – APLY



*Aplysina* spp.

## Other massive sponges (to be recorded as "Other massive") – OTHR



*Agelas oroides*

## Birds' nest glass sponge – BIRD



*Pheronema carpenteri*

## Felt vase glass sponge – FELT



*Asconema setubalense*



**CORALS**

**Soft corals – SOFT**



*Alcyonium palmatum*

**Thick and tall red, yellow fan-shaped gorgonians – FANG**



*Acanthogorgia hirsuta*

*Paramuricea clavata*

VU

**Seapens – PENS**



*Pteroeides spinosum* and *Pennatula* spp.

**Bamboo corals – BAMB**



*Isidella elongata*

CR

**Bright yellow or salmon-pink hard corals (*Dendrophyllia* spp.) – DEND**



Dead *dendrophyllids*

*Dendrophyllia cornigera*

EN

*Dendrophyllia ramea*

VU

**Thin, delicate white, reddish, yellow fan-shaped gorgonians – THIG**



*Paramuricea macrospina*

**Precious red coral – REDC**



*Corallium rubrum*

EN

**Flexible white and salmon-pink fan-shaped gorgonians (*Eunicella* spp.) – EUNI**



*Eunicella cavolini*

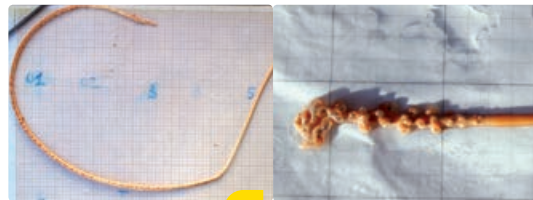
*Eunicella verrucosa*

**Salmon-pink, brittle fan-shaped gorgonians – CALL**



*Callogorgia verticillata*

**White, stem-like sea pens – STEM**



*Funiculina quadrangularis*

*Kophobelemnion stelliferum*

VU

**Candelabrum-shaped, red gorgonians – ELLP**



*Ellisella paraplexauroides*

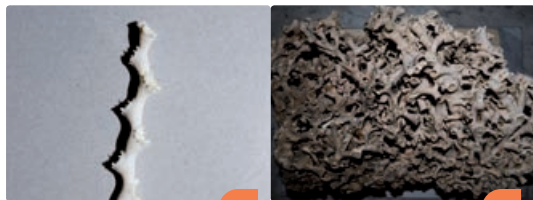
VU

**Tall, white or yellow whip gorgonians (*Viminella flagellum*) – VIMF**



*Viminella flagellum*

**White corals – WHIT**



*Madrepora oculata*

EN

*Lophelia pertusa*

EN

**Colonial hard corals – CLAD**



*Cladocora caespitosa*

EN

**Arborescent black corals – BLAC**



*Antipathella subpinnata*

*Parantipathes larix*

*Leiopathes glaberrima*

EN

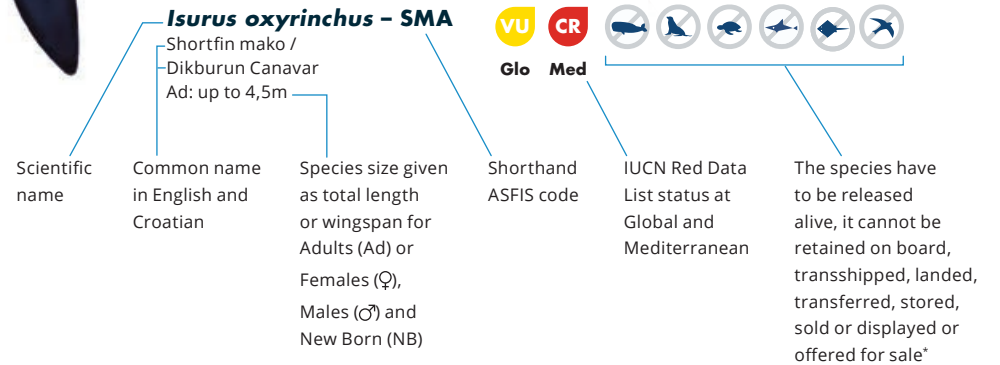
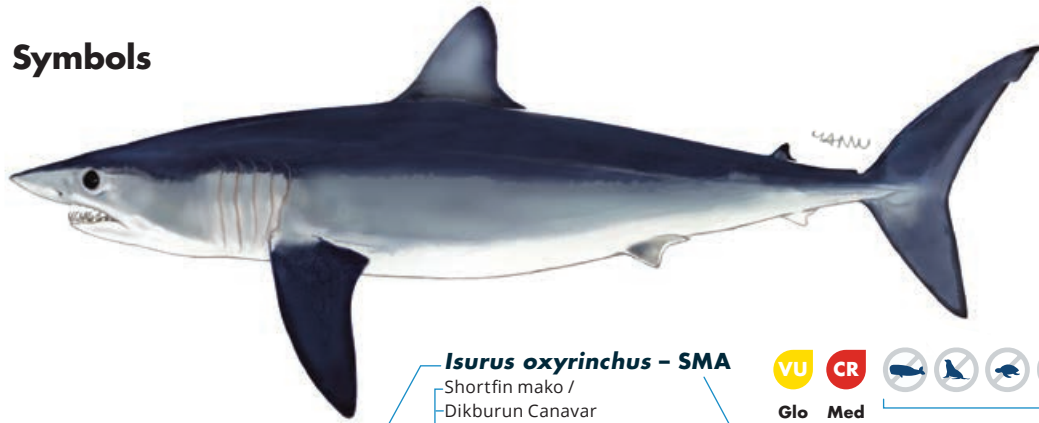
*Antipathes dichotoma*



## Abbreviations

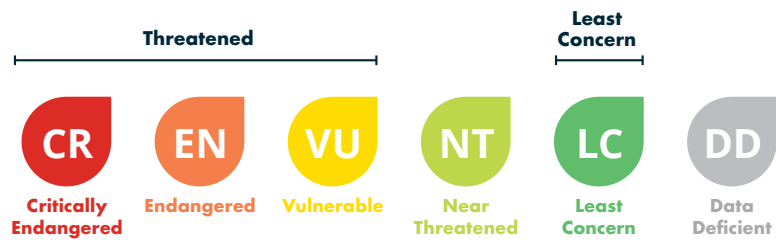
Ad: Adult  
 ♂: Male  
 ♀: Female  
 NB: New Born  
 W: Wingspan

## Symbols



## Key to IUCN Red List category symbols

For each species sheets, the IUCN categories relating to the conservation status both globally (Glo) and Mediterranean (Med) level are reported, according to the following scheme:



Geographical subarea (GSA) 17 refers to the Northern Adriatic Sea. If the incidentally caught species is not included in this guide, please refer to the **Identification guide of vulnerable species incidentally caught in Mediterranean fisheries**, which also provides detailed information on the conservation status, regulations and protection of each species (under ACCOBAMS, SPA/BD Protocol, CITES, CMS, GFCM, IUCN). Illustration source of sharks and rays: FAO Original scientific illustrations archive. Reproduced with permission.

\* GFCM recommendations related to the management and conservation of vulnerable species in the GFCM area of application: seabirds (Rec. GFCM/35/2011/3); sea turtles (Rec. GFCM/35/2011/4); cetaceans (Rec. GFCM/36/2012/2; Res. GFCM/43/2019/2); sharks and rays (Rec. GFCM/36/2012/3; Rec. GFCM/42/2018/2) and corals (Res. GFCM/43/2019/6); Ordinance on strictly protected species (Official Gazette 144/2013)



QR Code

# POCKET IDENTIFICATION GUIDE OF MAIN VULNERABLE SPECIES INCIDENTALLY CAUGHT IN ITALIAN FISHERIES

Simplified guide adapted for Italian (GSA 18) from the Identification guide of vulnerable species incidentally caught in Mediterranean fisheries



MARINE MAMMALS



**Tursiops truncatus**

Common bottlenose dolphin / Tursiope

♂: 2.5 - 3.9 m  
♀: 2.2 - 3.2 m  
NB: 1 - 1.2 m



Glo Med



**Stenella coeruleoalba**

Striped dolphin / Stenella striata  
Ad: 1.8 - 2.6 m  
NB: 85 - 95 cm



Glo Med



**Delphinus delphis**

Short-beaked common dolphin / Delfino comune  
♂: 2.0 - 2.6 m / ♀: 2.4 m / NB: 80 - 90 cm



Glo Med



**Ziphius cavirostris**

Cuvier's beaked whale / Zifio

♂: up to 7.5 m  
♀: up to 7 m  
NB: 2 - 2.7 m



Glo Med



**Grampus griseus**

Risso's dolphin / Grampo o Delfino di Risso  
Ad: 3 - 4 m / NB: 1.2 - 1.5 m



Glo Med



**Globicephala melas**

Long-finned pilot whale / Globicefalo

♂: 5.5 - 6.2 m / ♀: 4.5 - 5.5 m  
NB: 1.7 - 1.8 m



Glo Med



**Physeter macrocephalus**

Sperm whale / Capodoglio

♂: 16 - 18 m / ♀: 11 - 12 m / NB: 3.3 - 4.2 m



Glo Med



**Balaenoptera physalus**

Fin whale / Balenottera comune

♂: 18 - 20 m / ♀: 20 - 22 m / NB: 6 - 6.5 m



Glo Med



SEABIRDS



**LC** *Larus michahellis*  
Yellow-legged gull / Gabbiano reale  
**Glo** Wingspan: 120 – 140 cm



**VU** *Larus audouinii*  
Audouin's gull / Gabbiano corso  
**Glo** W: 117 – 128 cm



**LC** *Phalacrocorax carbo*  
Great Cormorant / Cormorano  
**Glo** W: 77 – 94 cm



**LC** *Gulosus aristotelis desmarestii*  
European shag / Marangone dal ciuffo  
**Glo** W: 115 – 125 cm



**VU** *Puffinus yelkouan*  
Yelkouan shearwater / Berta minore  
**Glo** W: 70 – 84 cm



**LC** *Calonectris diomedea*  
Scopoli's shearwater / Berta maggiore  
**Glo** W: 112 – 122 cm



SEA TURTLES



**VU** **LC**  
**Glo** **Med**  
**Caretta caretta**  
Loggerhead turtle / Tartaruga caretta  
♂: 75 – 80 cm; ♀: 66 – 85 cm



**EN**  
**Glo**  
**Chelonia mydas**  
Green turtle / Tartaruga verde  
Ad (♂ and ♀): 80 – 120 cm



**VU**  
**Glo**  
**Dermochelys coriacea**  
Leatherback sea turtle / Tartaruga liuto  
Average adult length 1.4 – 1.6 m



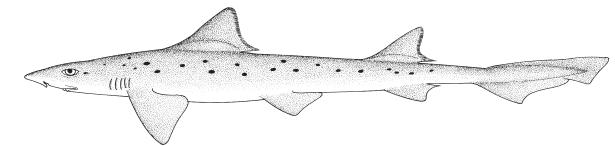
## CHONDRICHTYANS



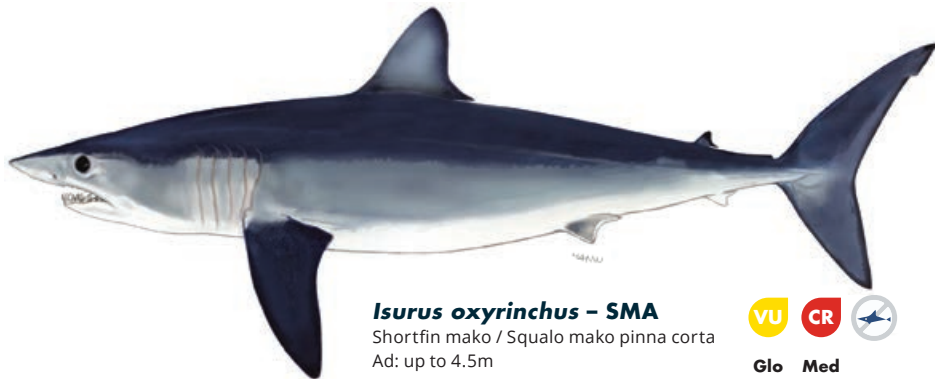
***Alopias vulpinus* - ALV**  
Thresher shark / Squalo volpe  
Ad: up to 6 m



***Galeorhinus galeus* - GAG**  
Tope shark / Canesca  
Ad: up to 1.6m



***Mustelus punctulatus* - MPT**  
Blackspotted smooth-hound /  
Palombo punteggiato  
Ad: up to 1.9 m



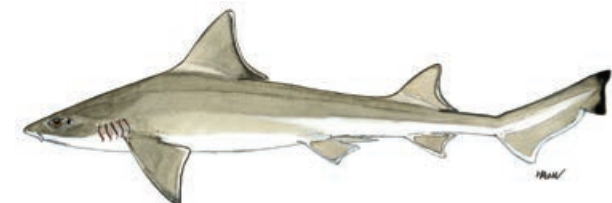
***Isurus oxyrinchus* - SMA**  
Shortfin mako / Squalo mako pinna corta  
Ad: up to 4.5m



***Mustelus asterias* - SDS**  
Starry smooth-hound shark /  
Palombo stellato  
Ad: up to 1.4 m



***Hexanchus griseus* - SBL**  
Bluntnose six-gill shark /  
Squalo capopiatto  
Ad: up to 5 m



***Mustelus mustelus* - SMD**  
Smooth-hound / Palombo  
Ad: up to 2 m



## CHONDRICHTYANS



### *Galeus melastomus* – SHO

Blackmouth catshark / Gattuccio boccanera  
Ad: up to 90 cm



Glo Med



### *Scyliorhinus canicula* – SYC

Small-spotted catshark / Gattuccio  
Ad: up to 1 m (60 cm in Mediterranean)



Glo Med



### *Scyliorhinus stellaris* – SYT

Nursehound / Gattopardo  
Ad: up to 1.7 m



Glo Med

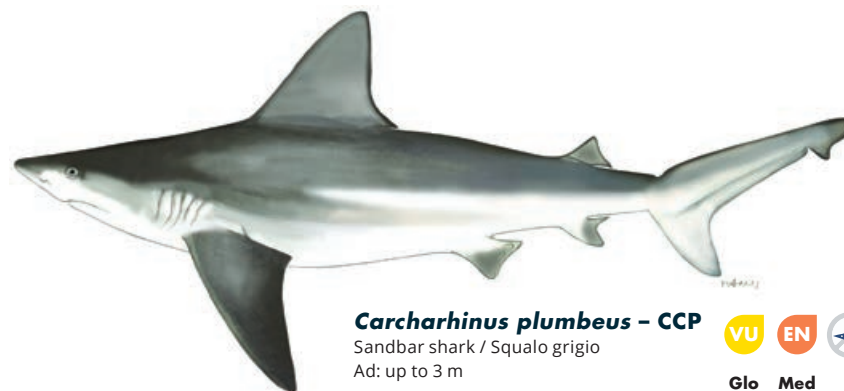


### *Cetorhinus maximus* – BSK

Basking shark / Squalo elefante  
Ad: up to 10 m



Glo Med

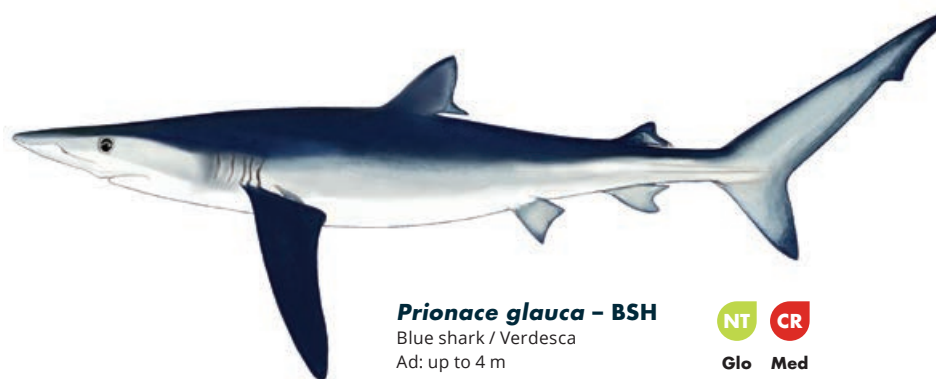


### *Carcharhinus plumbeus* – CCP

Sandbar shark / Squalo grigio  
Ad: up to 3 m



Glo Med



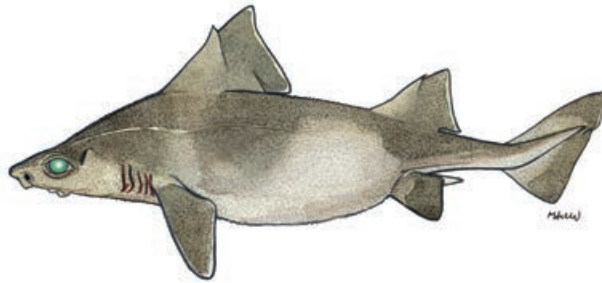
### *Prionace glauca* – BSH

Blue shark / Verdesca  
Ad: up to 4 m



Glo Med

## CHONDRICTYANS



***Oxynotus centrina* – OXY**  
 Angular rough shark / Pesce porco  
 Ad: up to 1.5 m



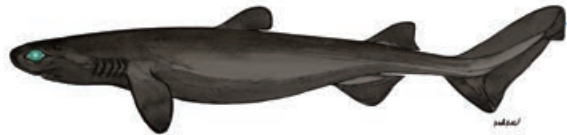
Glo Med



***Squalus acanthias* – DGS**  
 Picked dogfish / Squalus acanthias  
 Ad: up to 2 m



Glo Med



***Dalatias licha* – SCK**  
 Kitefin shark / Zigrino  
 Ad: up to 1.82 m



Med



***Squalus blainville* – QUB**  
 Longnose spurdog / Spinarolo bruno  
 Ad: 50 – 80 cm in total length,  
 occasionally until 1.1 m



Glo Med



***Centrophorus cf uyato* – GUP**  
 Gulper shark / Sagri  
 Ad: up to 1.2 m



Glo Med



***Etmopterus spinax* – ETX**  
 Velvet belly / Sagri nero o Moretto  
 Ad: up to 60 cm



Glo Med



***Heptanchias perlo* – HXT**  
 Sharpnose sevengill shark /  
 Squalo manzo  
 Ad: up to 1.4m



Glo Med



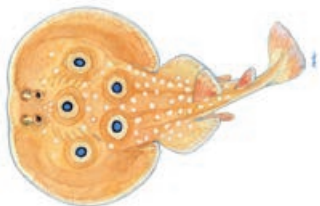
## CHONDRICHTYANS



### *Torpedo marmorata* – TTR

Marbled electric ray /  
Torpedine mazzata  
Ad: up to 1 m in total length

DD LC  
Glo Med



### *Torpedo torpedo* – TTV

Common torpedo /  
Torpedine occhiuta  
Ad: 60 cm in total length

DD LC  
Glo Med

### *Pteroplatytrygon violacea* – PLS

Pelagic stingray /  
Trigone viola  
Ad: up to 80 cm  
total length

LC LC  
Glo Med



### *Tetronarce nobiliana* – TTO

Electric ray /  
Torpedine nera  
Ad: up to 1.8m

DD LC  
Glo Med



### *Leucoraja circularis* – RJ1

Sandy ray / Razza rotonda  
Ad: up to 1.2 m total length

EN CR

Glo Med



### *Raja asterias* – JRS

Mediterranean  
starry ray /  
Razza stellata  
Ad: up to 80 cm in total length

NT NT  
Glo Med



### *Raja clavata* – RJC

Thornback ray / Razza chiodata  
Ad: up to 90-130 cm in total length

NT NT  
Glo Med



### *Raja miraletus* – JAI

Brown ray / Razza quattrocchi  
Ad: up to 70 cm in total length

LC LC  
Glo Med



### *Raja polystigma* – RJM

Speckled skate / Razza polistimma  
Ad: up to 70 cm

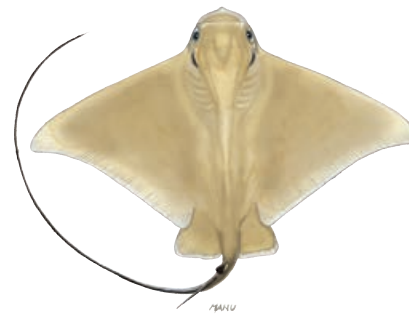
LC LC  
Glo Med



### *Dasyatis pastinaca* – JDP

Common stingray / Pastinaca  
Ad: Disc wide up to 68 cm

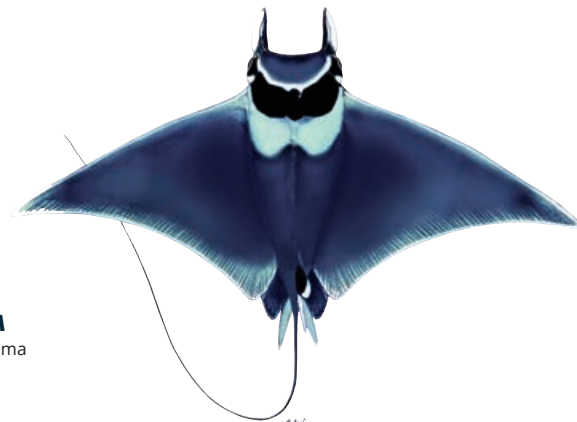
DD VU  
Glo Med



### *Myliobatis aquila* – MYL

Common eagle ray / Aquila di mare  
Ad: Disc wide up to 1.5 m

DD VU  
Glo Med



### *Mobula mobular* – RMM

Devil fish / Mobula o Diavolo di mare  
Ad: Disc wide up to 5.2 m

EN EN

Glo Med



### *Dipturus oxyrinchus* – RJO

Pocheteau noir /  
Razza monaca  
Ad: Disc wide up to 1.5 m

NT NE  
Glo Med



### *Chimaera monstrosa* – CMO

Rabbit fish / Chimera  
Ad: up to 1 m

NT NT  
Glo Med



# SPONGES



## Massive keratose sponges – KERA



*Sarcotragus* sp.



*Sarcotragus* sp.



*Hippospongia communis*



*Ircinia variabilis*

## Globular sponges – GLOS



*Suberites domuncula*



*Tethya aurantium*



*Therea* spp.

## Massive Mediterranean stony sponge – PETR



*Petrosia ficiformis* (burgundy morph)

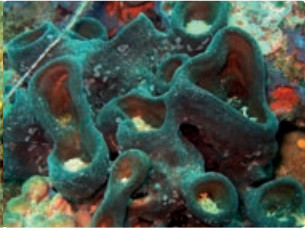


*Petrosia ficiformis* (white morph)

## Lamellate to cup-shaped sponges – LAMS



*Spongia lamella*



*Calyx nicaeensis*

## Arborescent sponges – ARBS



*Axinella* sp.

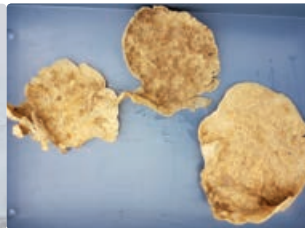


*Axinella cannabina*

## Fan-shaped sponges – FANS



*Phakellia ventilabrum*



*Phakellia robusta*

## Massive, (sub-) spherical hard sponges (*Geodia* spp.) – GEOD



*Geodia cydonium*

## Massive-tubular gold sponges (*Aplysina* spp.) – APLY



*Aplysina* spp.

## Lamellate rock sponges (*Leiodermatium* sp.) – ROCK



*Leiodermatium pfeifferae*

## Other massive sponges (to be recorded as "Other massive") – OTHR



*Agelas oroides*

## Birds' nest glass sponge – BIRD



*Pheronema carpenteri*

## Felt vase glass sponge – FELT



*Asconema setubalense*



**CORALS**

**Soft corals – SOFT**



*Alcyonium palmatum*

**Thick and tall red, yellow fan-shaped gorgonians – FANG**



*Acanthogorgia hirsuta*

*Paramuricea clavata*

VU

**Seapens – PENS**



*Pteroeides spinosum* and *Pennatula* spp.

**Bamboo corals – BAMB**



*Isidella elongata*

CR

**Bright yellow or salmon-pink hard corals (*Dendrophyllia* spp.) – DEND**



Dead *dendrophyllids*

*Dendrophyllia cornigera*

EN

*Dendrophyllia ramea*

VU

**Thin, delicate white, reddish, yellow fan-shaped gorgonians – THIG**



*Paramuricea macrospina*

**Precious red coral – REDC**



*Corallium rubrum*

EN

**Flexible white and salmon-pink fan-shaped gorgonians (*Eunicella* spp.) – EUNI**



*Eunicella cavolini*

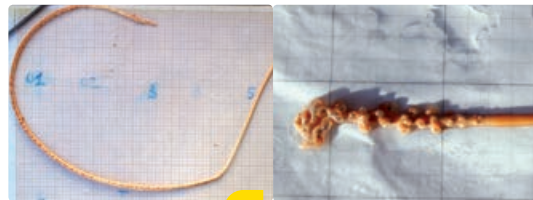
*Eunicella verrucosa*

**Salmon-pink, brittle fan-shaped gorgonians – CALL**



*Callogorgia verticillata*

**White, stem-like sea pens – STEM**



*Funiculina quadrangularis*

VU

*Kophobelemnion stelliferum*

**Candelabrum-shaped, red gorgonians – ELLP**



*Ellisella paraplexauroides*

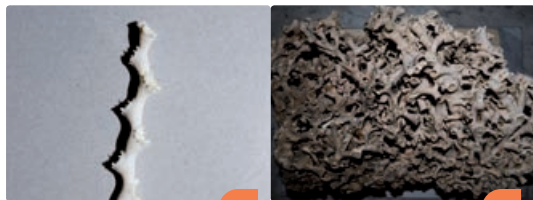
VU

**Tall, white or yellow whip gorgonians (*Viminella flagellum*) – VIMF**



*Viminella flagellum*

**White corals – WHIT**



*Madrepora oculata*

EN

*Lophelia pertusa*

EN

**Colonial hard corals – CLAD**



*Cladocora caespitosa*

EN

**Arborescent black corals – BLAC**



*Antipathella subpinnata*

*Parantipathes larix*

*Leiopathes glaberrima*

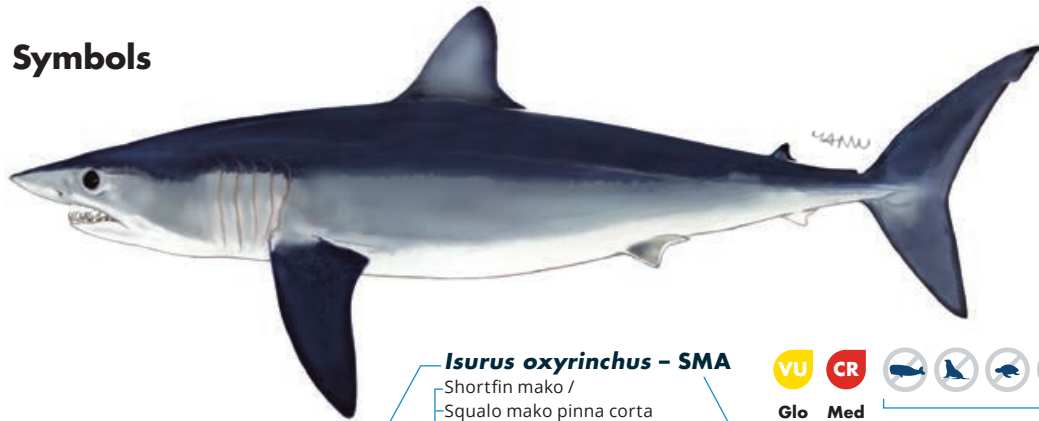
EN

*Antipathes dichotoma*

## Abbreviations

Ad: Adult  
 ♂: Male  
 ♀: Female  
 NB: New Born  
 W: Wingspan

## Symbols



***Isurus oxyrinchus* – SMA**  
 Shortfin mako /  
 Squalo mako pinna corta  
 Ad: up to 4,5m

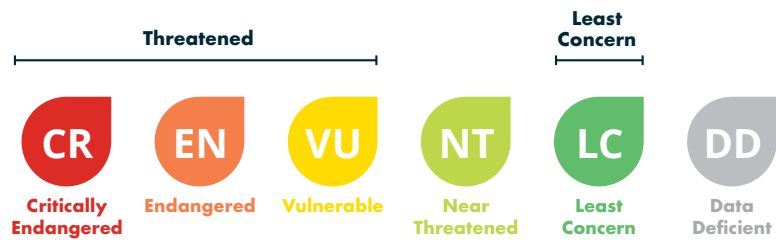
Scientific name      Common name in English and Italian      Species size given as total length or wingspan for Adults (Ad) or Females (♀), Males (♂) and New Born (NB)

**VU** **CR**  
 Glo Med

Shorthand ASFIS code      IUCN Red Data List status at Global and Mediterranean      The species have to be released alive, it cannot be retained on board, transhipped, landed, transferred, stored, sold or displayed or offered for sale\*

## Key to IUCN Red List category symbols

For each species sheets, the IUCN categories relating to the conservation status both globally (Glo) and Mediterranean (Med) level are reported, according to the following scheme:



Geographical subarea (GSA) 18 refers to the Southern Adreatic Sea. If the incidentally caught species is not included in this guide, please refer to the **Identification guide of vulnerable species incidentally caught in Mediterranean fisheries**, which also provides detailed information on the conservation status, regulations and protection of each species (under ACCOBAMS, SPA/BD Protocol, CITES, CMS, GFCM, IUCN). Illustration source of sharks and rays: FAO Original scientific illustrations archive. Reproduced with permission.

\* GFCM recommendations related to the management and conservation of vulnerable species in the GFCM area of application: seabirds (Rec. GFCM/35/2011/3); sea turtles (Rec. GFCM/35/2011/4); cetaceans (Rec. GFCM/36/2012/2; Res. GFCM/43/2019/2); sharks and rays (Rec. GFCM/36/2012/3; Rec. GFCM/42/2018/2) and corals (Res. GFCM/43/2019/6).



QR Code



# POCKET IDENTIFICATION GUIDE OF MAIN VULNERABLE SPECIES INCIDENTALLY CAUGHT IN MOROCCAN FISHERIES

Simplified guide adapted for Morocco (GSA 3) from the Identification guide of vulnerable species incidentally caught in Mediterranean fisheries



IN COLLABORATION WITH



FUNDED BY



## MARINE MAMMALS



### *Stenella coeruleoalba*

Striped dolphin /  
الدلفين الأزرق والأبيض (المخطط)  
Ad: 1.8-2.6 m  
NB: 85-95 cm



Glo Med



### *Grampus griseus*

Risso's dolphin /  
دلفين ريسو (غرامبوس)  
Ad: 3 - 4 m / NB: 1.2 - 1.5 m



Glo Med



### *Delphinus delphis*

Common dolphin /  
الدلفين الشائع  
♂: 2.0-2.6 m / ♀: 2.4 m /  
NB: 80-90 cm



Glo Med



### *Globicephala melas*

Long-finned pilot whale /  
كروي الرأس الشائع (الحوث القاتم)  
♂: 5.5-6.2 m / ♀: 4.5-5.5 m  
NB: 1.7-1.8 m



Glo Med



### *Tursiops truncatus*

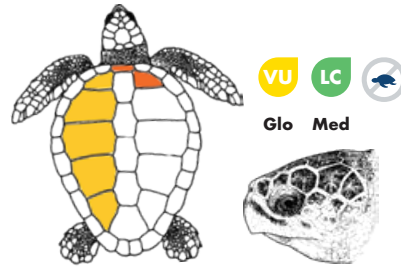
Common bottlenose dolphin /  
الدلفين الكبير (ذو الأنف الزجاجي)  
♂: 2.5 - 3.9 m / ♀: 2.2-3.2  
NB: 1-1.2 m



Glo Med



## SEA TURTLES



Glo Med

### *Caretta caretta*

Loggerhead turtle / سلحفاة بحرية ضخمة الرأس  
♂: 75-80 cm; ♀: 66-85 cm



Glo

### *Chelonia mydas*

Green turtle / السلحفاة الخضراء  
Ad (♂ and ♀): 80-120 cm



Glo

### *Dermochelys coriacea*

Leatherback sea turtle /  
سلحفاة المحيط جلدية الظهر  
Average adult length 1.4-1.6 m



## SEABIRDS



Winter

Summer



### *Larus michahellis*

Yellow-legged gull /  
نورس ميكاهيل  
Wingspan: 1.2 - 1.4 m

Glo



Winter

Summer



### *Larus melanocephalus*

Mediterranean gull /  
نورس متوسطي  
W: 94 - 102 cm

Glo



Winter

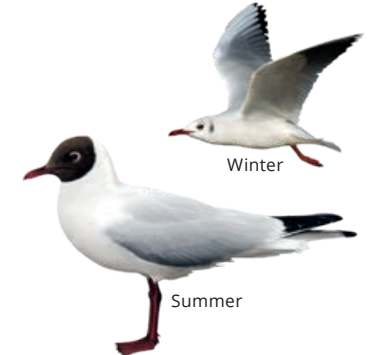
Summer



### *Larus audouinii*

Audouin's gull /  
نورس أودوين  
W: 1.17 - 1.28 m

Glo



Winter

Summer



### *Larus ridibundus*

Black-headed gull /  
نورس أسود الرأس  
W: 86 - 99 cm

Glo



Juvenile

Adult



### *Larus fuscus*

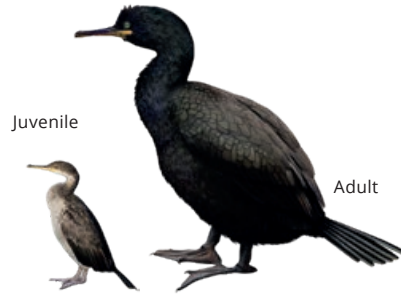
Lesser black-backed gull /  
نورس أسمر  
W: 1.44 - 1.66 m

Glo

SEABIRDS



**LC** *Phalacrocorax carbo*  
Great Cormorant / غاق كبير  
**Glo** W: 77 – 94 cm



**LC** *Gulosus aristotelis desmarestii*  
European shag / غاق أرسطو  
**Glo** W: 1.15 – 1.25 m



**VU** *Puffinus yelkouan*  
Yelkouan shearwater / جلم ماء متوسطي  
**Glo** W: 70 – 84 cm



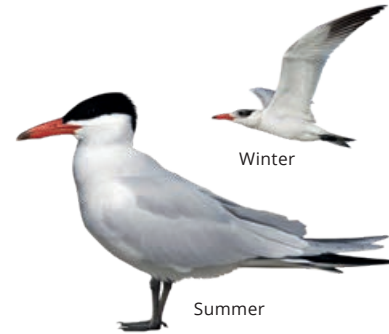
**CR** *Puffinus mauretanicus*  
Balearic shearwater / جلم ماء موريطاني  
**Glo** W: 78 – 90 cm



**LC** *Calonectris diomedea*  
Scopoli's shearwater / جلم ماء سكوبولي  
**Glo** W: 1.12 – 1.22 m



**LC** *Hydrobates pelagicus*  
European storm petrel / AR: NA  
**Glo** W: 37 – 41 cm



**LC** *Hydroprogne caspia*  
Caspian tern / خرشنة قزوينية  
**Glo** W: 96 – 111 cm



**LC** *Thalasseus sandvicensis*  
Sandwich tern / خرشنة ساندويتش  
**Glo** W: 85 – 97 cm



**LC** *Thalasseus bengalensis*  
Lesser crested tern / خرشنة البنغال  
**Glo** W: 76 – 82 cm



**LC** *Sternula albifrons*  
Little tern / خرشنة صغيرة  
**Glo** W: 41- 47 cm



**LC** *Sterna hirundo*  
Common tern /  
خرشنة خطافية  
**Glo** W: 70 – 80 cm





**Mustelus asterias – SDS**

Starry smooth-hound shark /  
كلب نجمي (قطاط)  
Ad: up to 1.4 m

LC VU  
Glo Med



**Prionace glauca – BSH**

Blue shark / قرش أزرق (كلب بحر)  
Ad: up to 4 m

NT CR  
Glo Med



**Galeorhinus galeus – GAG**

Tope shark / مُتسوّلة (قطاط)  
Ad: up to 1.6 m

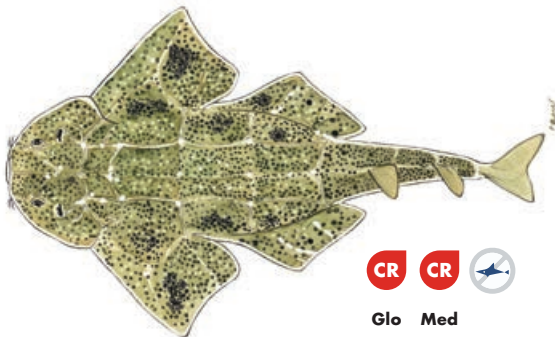
VU VU  
Glo Med



**Scyliorhinus canicula – SYC**

Small-spotted catshark / قِط صغير مبرقش (كاتارلي / نمر)  
Ad: up to 1 m (60 cm in Mediterranean)

LC LC  
Glo Med

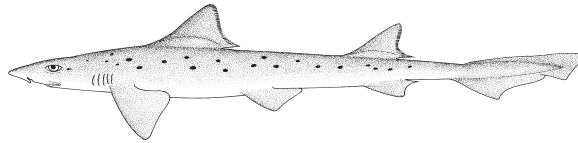


**Squatina squatina – AGN**

Angelshark / ملاك شائع (سفن وقاص)  
Ad: up to 2.5 m total length

CR CR  
Glo Med

**CHONDRICHTYANS**



**Mustelus punctulatus – MPT**

Blackspotted smooth-hound /  
كلب مُنقَط (قطاط)  
Ad: up to 1.9 m

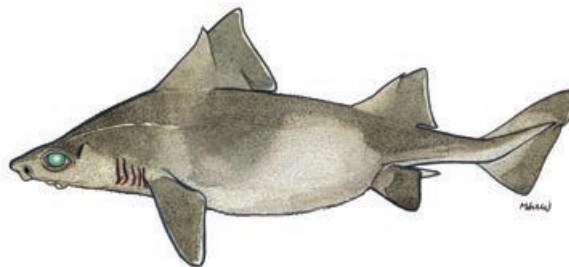
DD VU  
Glo Med



**Carcharhinus plumbeus – CCP**

Sandbar shark / قرش رمادي (كلب بحر)  
Ad: up to 3 m

VU EN  
Glo Med



**Oxynotus centrina – OXY**

Angular rough shark /  
حمار البحر (نعجة)  
Ad: up to 1.5 m

VU CR  
Glo Med



**Dalatias licha – SCK**

Kitefin shark / كوسج شراعي الزعنفة  
Ad: up to 1.82 m

VU VU  
Glo Med



**Isurus oxyrinchus – SMA**

Shortfin mako /  
زرقايا (زرقايا)  
Ad: up to 4.5 m

VU CR  
Glo Med



**Sphyrna zygaena – SPZ**

Smooth hammerhead /  
أبو مطرقة ناعم (قرش بومطرقة)  
Ad: up to 5 m

VU CR  
Glo Med



**Squalus blainville – QUB**

Longnose spurdog /  
كلب أبو شوكة مُتأنف قطاط بوشوكة  
Ad: 50 – 80 cm in total length,  
occasionally until 1.1 m

DD DD  
Glo Med

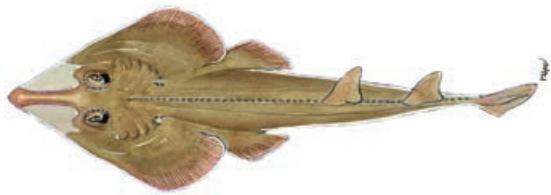


**Hexanchus griseus – SBL**

Bluntnose six-gill shark / كلب أبو ستة (الدودة)  
Ad: up to 5 m

NT DD  
Glo Med

## CHONDRICHTYANS



### *Rhinobatos rhinobatos* - RBC

Common guitarfish /  
قيثارة شائعة (محرث / قرس)  
Ad: 1.5 m in total length



Glo Med



### *Pteroplatytrygon violacea* - PLS

Pelagic stingray /  
راية لاسعة بنفسجية (الزرقايا)  
Ad: Disc wide up to 80 cm



Glo Med

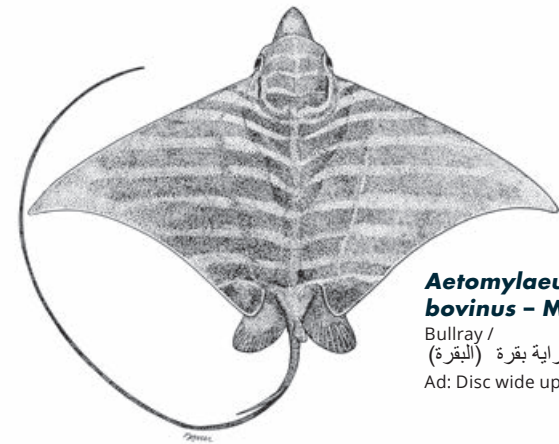


### *Dasyatis pastinaca* - JDP

Common stingray /  
راية لاسعة شائعة (حمام)  
Ad: Disc wide up to 68 cm



Glo Med



### *Aetomylaeus bovinus* - MPO

Bullray /  
راية بقرة (البقرة)  
Ad: Disc wide up to 2.2 m



Glo Med

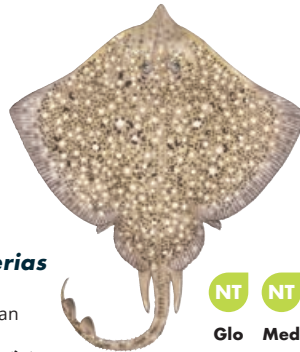


### *Glaucostegus halavi* - RBH

Halavi ray /  
قيثارة شائعة (محرث / قرس)  
Ad: 1.2 m in total length  
(probably up to 1.71 m)



Glo



### *Raja asterias* - JRS

Mediterranean  
starry ray /  
راية مية (قرشلة)  
Ad: up to 80 cm in total length



Glo Med

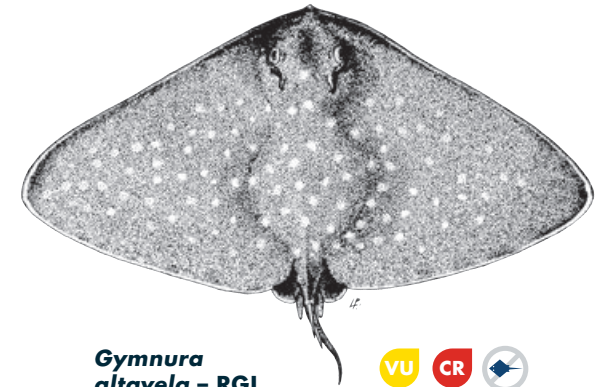


### *Raja brachyura* - RJH

Blonde ray / AR: NA  
Ad: up to 1.2 m  
in total length



Glo Med



### *Gymnura altavela* - RGL

Spiny butterfly ray /  
راية الفراشة (حصيرة)  
Ad: Disc wide up to 4 m, common 2 m



Glo Med



### *Leucoraja circularis* - RJI

Sandy ray / راية رملية  
Ad: up to 1.2 m total length



Glo Med



### *Raja miraletus* - JAI

Brown ray / راية ام عيون (قرشلة)  
Ad: up to 70 cm in total length



Glo Med



### *Raja montagui* - RJM

Spotted ray / راية مبرقشة  
Ad: up to 80 cm in total length



Glo Med



### *Raja clavata* - RJC

Thornback ray /  
راية مشوكة الظهر (قرشلة)  
Ad: up to 90-130 cm in total length



Glo Med



# SPONGES



## Massive keratose sponges – KERA



*Sarcotragus* sp.



*Sarcotragus* sp.



*Hippospongia communis*



*Ircinia variabilis*

## Globular sponges – GLOS



*Suberites domuncula*



*Tethya aurantium*



*Therea* spp.

## Massive Mediterranean stony sponge – PETR



*Petrosia ficiformis* (burgundy morph)

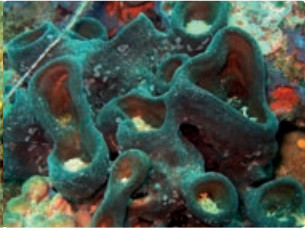


*Petrosia ficiformis* (white morph)

## Lamellate to cup-shaped sponges – LAMS



*Spongia lamella*



*Calyx nicaeensis*

## Arborescent sponges – ARBS



*Axinella* sp.

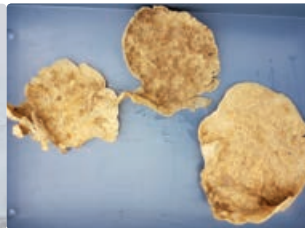


*Axinella cannabina*

## Fan-shaped sponges – FANS



*Phakellia ventilabrum*



*Phakellia robusta*

## Massive, (sub-) spherical hard sponges (*Geodia* spp.) – GEOD



*Geodia cydonium*

## Massive-tubular gold sponges (*Aplysina* spp.) – APLY



*Aplysina* spp.

## Lamellate rock sponges (*Leiodermatium* sp.) – ROCK



*Leiodermatium pfeifferae*

## Other massive sponges (to be recorded as "Other massive") – OTHR



*Agelas oroides*

## Birds' nest glass sponge – BIRD



*Pheronema carpenteri*

## Felt vase glass sponge – FELT



*Asconema setubalense*



**CORALS**

**Soft corals – SOFT**



*Alcyonium palmatum*

**Thick and tall red, yellow fan-shaped gorgonians – FANG**



*Acanthogorgia hirsuta*

*Paramuricea clavata*

VU

**Seapens – PENS**



*Pteroeides spinosum* and *Pennatula* spp.

**Bamboo corals – BAMB**



*Isidella elongata*

CR

**Bright yellow or salmon-pink hard corals (*Dendrophyllia* spp.) – DEND**



Dead *dendrophyllids*

*Dendrophyllia cornigera*

EN

*Dendrophyllia ramea*

VU

**Thin, delicate white, reddish, yellow fan-shaped gorgonians – THIG**



*Paramuricea macrospina*

**Precious red coral – REDC**



*Corallium rubrum*

EN

**Flexible white and salmon-pink fan-shaped gorgonians (*Eunicella* spp.) – EUNI**



*Eunicella cavolini*

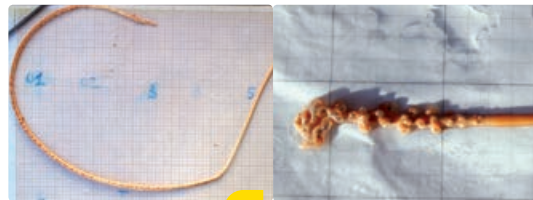
*Eunicella verrucosa*

**Salmon-pink, brittle fan-shaped gorgonians – CALL**



*Callogorgia verticillata*

**White, stem-like sea pens – STEM**



*Funiculina quadrangularis*

VU

*Kophobelemnion stelliferum*

**Candelabrum-shaped, red gorgonians – ELLP**



*Ellisella paraplexauroides*

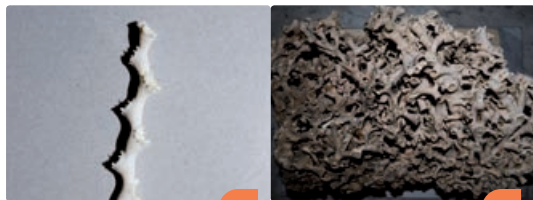
VU

**Tall, white or yellow whip gorgonians (*Viminella flagellum*) – VIMF**



*Viminella flagellum*

**White corals – WHIT**



*Madrepora oculata*

EN

*Lophelia pertusa*

EN

**Colonial hard corals – CLAD**



*Cladocora caespitosa*

EN

**Arborescent black corals – BLAC**



*Antipathella subpinnata*

*Parantipathes larix*

*Leiopathes glaberrima*

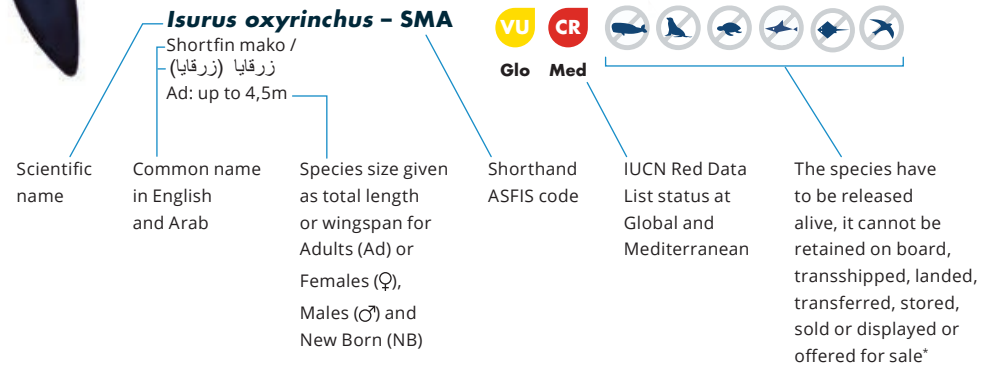
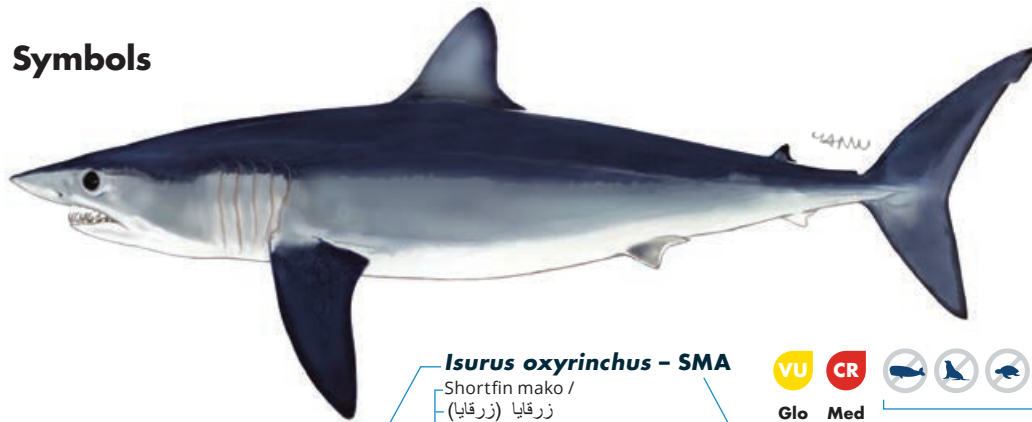
EN

*Antipathes dichotoma*

## Abbreviations

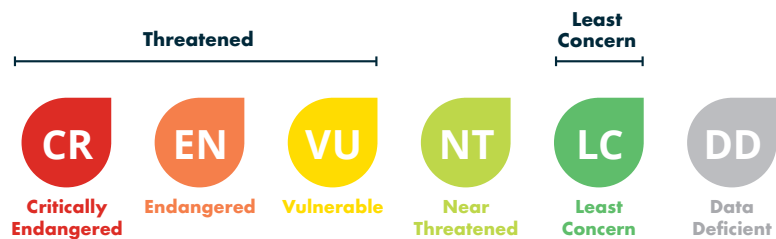
Ad: Adult  
 ♂: Male  
 ♀: Female  
 NB: New Born  
 W: Wingspan

## Symbols



## Key to IUCN Red List category symbols

For each species sheets, the IUCN categories relating to the conservation status both globally (Glo) and Mediterranean (Med) level are reported, according to the following scheme:



Geographical subarea (GSA) 3 refers to Southern Alboran Sea. If the incidentally caught species is not included in this guide, please refer to the **Identification guide of vulnerable species incidentally caught in Mediterranean fisheries**, which also provides detailed information on the conservation status, regulations and protection of each species (under ACCOBAMS, SPA/BD Protocol, CITES, CMS, GFCM, IUCN).  
 Illustration source of sharks and rays: FAO Original scientific illustrations archive. Reproduced with permission.

\* GFCM recommendations related to the management and conservation of vulnerable species in the GFCM area of application: seabirds (Rec. GFCM/35/2011/3); sea turtles (Rec. GFCM/35/2011/4); cetaceans (Rec. GFCM/36/2012/2; Res. GFCM/43/2019/2); sharks and rays (Rec. GFCM/36/2012/3; Rec. GFCM/42/2018/2) and corals (Res. GFCM/43/2019/6).  
 National legislation: Annual bylaw relating to the organisation of hunting and bylaw of 28 September 1995 regulating the exercise of fishing by Ministry of Agriculture, Water Resources and Fisheries.



QR Code



# POCKET IDENTIFICATION GUIDE OF MAIN VULNERABLE SPECIES INCIDENTALLY CAUGHT IN TUNISIAN FISHERIES

Simplified guide adapted for Tunisia (GSA 12,13 & 14) from the Identification guide of vulnerable species incidentally caught in Mediterranean fisheries



## MARINE MAMMALS



### *Stenella coeruleoalba*

Striped Dolphin /  
Dauphin bleu et blanc /  
الدلفين الأزرق والأبيض (المخطط)  
Ad: 1.8-2.6 m  
NB: 85-95 cm



Glo Med



### *Delphinus delphis*

Common dolphin /  
Dauphin commun /  
الدلفين الشائع  
♂: 2.0-2.6 m / ♀: 2.4 m /  
NB: 80-90 cm



Glo Med



### *Tursiops truncatus*

Bottlenose dolphin /  
Grand dauphin, dauphin souffleur /  
الدلفين الكبير (ذو الأنف الزجاجي)  
♂: 2.5 - 3.9 m / ♀: 2.2-3.2  
NB: 1-1.2 m



Glo Med



### *Balaenoptera physalus*

Fin whale / Rorqual commun /  
المهرقول الشائع  
♂: 18-20 m / ♀: 20-22 m / NB: 6-6.5 m



Glo Med

## SEABIRDS



winter

Summer

### *Larus michahellis*

Yellow-legged gull / Goéland  
leucophée / نورس أصفر الساق /  
Wingspan: 1.2 - 1.4 m



Glo



Winter

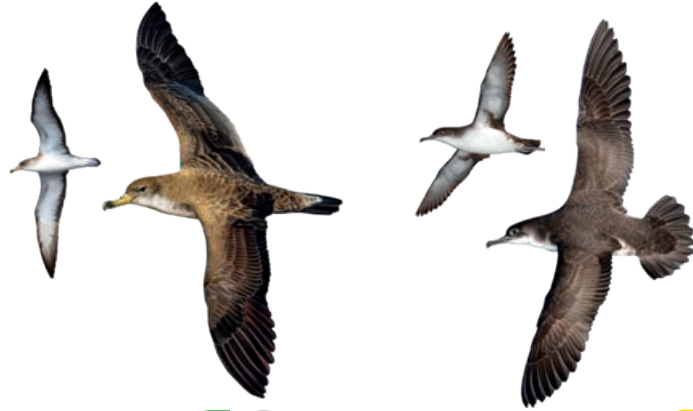
Summer

### *Larus audouinii*

Audouin's gull / Goéland  
d'Audouin / نورس أودوين /  
W: 1.17 - 1.28 m



Glo



### *Calonectris diomedea*

Scopoli's shearwater /  
Puffin de Scopoli /  
جلم ماء سكوبولي  
W: 1.12 - 1.22 m



Glo

### *Puffinus yelkouan*

Yelkouan shearwater /  
Puffin yelkouan /  
جلم ماء متوسطي  
W: 70 - 84 cm



Glo



### *Phalacrocorax carbo*

Great cormorant /  
Grand Cormoran /  
غاق كبير  
W: 77 - 94 cm



Glo

## SEA TURTLES



Glo Med

### *Caretta caretta*

Loggerhead / Tortue caouanne /  
سلحفاة بحرية ضخمة الرأس  
♂: 75-80 cm; ♀: 66-85 cm



Glo

### *Chelonia mydas*

Green turtle / Tortue franche,  
Tortue verte /  
السلحفاة الخضراء /  
Ad (♂ and ♀): 80-120 cm



Glo

### *Dermochelys coriacea*

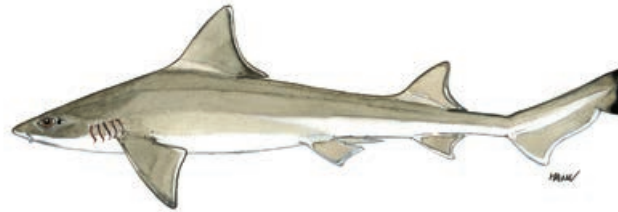
Leatherback / Tortue luth /  
سلحفاة المحيط جلدية الظهر  
Average adult length 1.4-1.6 m

## CHONDRICHTYANS



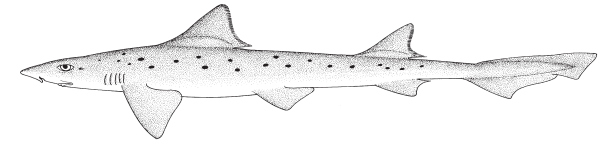
### **Mustelus asterias – SDS**

Starry smooth-hound shark / Émissole tachetée / كلب نجمي (قطاط)  
Ad: up to 1.4 m



### **Mustelus mustelus – SMD**

Smooth-hound / Émissole lisse / كلب ناعم (قطاط)  
Ad: up to 2 m



### **Mustelus punctulatus – MPT**

Blackspotted smooth-hound / Émissole pointillée / كلب منقط (قطاط)  
Ad: up to 1.9 m



### **Carcharhinus brevipinna – CCB**

Spinner shark / Requin tisserand / قرش لولبي (وشة / بومنقار)  
Ad: up to 28 cm



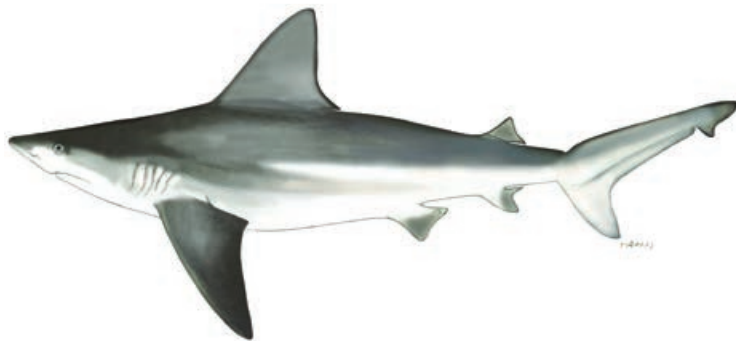
### **Squalus blainville – QUB**

Longnose spurdog / Aiguillat-coq / كلب أبو شوكة مأنف قطاط بوشوكة  
Ad: 50 – 80 cm, occasionally until 1.1 m



### **Squalus megalops – DOP**

Shortnose spurdog / Aiguillat nez court / قطاط بوشوكة  
Ad: less than 70 cm in total length (also 100 cm TL)



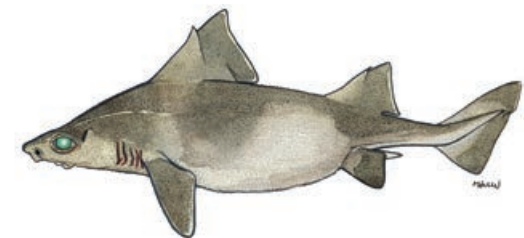
### **Carcharhinus plumbeus – CCP**

Sandbar shark / Requin gris / قرش رمادي (كلب بحر)  
Ad: up to 3 m



### **Isurus oxyrinchus – SMA**

Shortfin mako / Requin-taupe bleue / زرقابا (زرقابا)  
Ad: up to 4.5 m



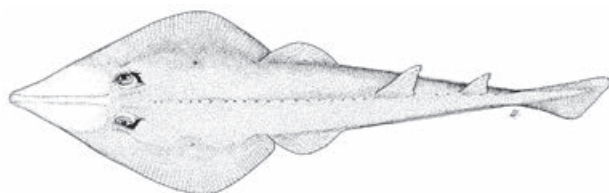
### **Oxynotus centrina – OXY**

Angular rough shark / Centrine commune / حمار البحر (نعجة)  
Ad: up to 1.5 m





## CHONDRICHTYANS



### *Glaucostegus cemiculus* – RBC

Blackchin guitarfish / Guitar de Mer fousseuse /  
قِيثَارَة سَوْدَاء الذَّقْن (مِحْرَاث / قِرْس)  
Ad: up to 2.42 m length



Glo Med



### *Hexanchus griseus* – SBL

Bluntnose six-gill shark / Requin gris /  
كَلَب أَبُو سِتَّة (الدُودَة)  
Ad: up to 5 m



Glo Med

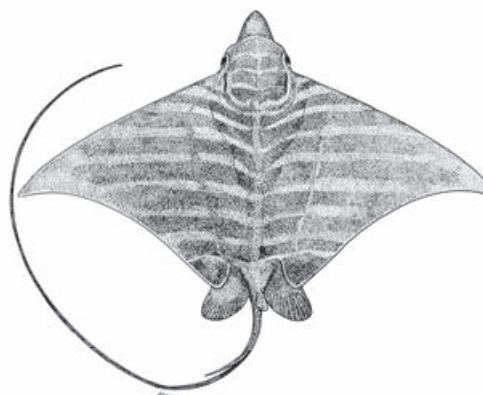


### *Squatina aculeata* – SUA

Sawback angelshark /  
Ange de mer épineux / (سِفْن / وَقَاص) /  
Ad: up to 1.9 m in total length



Glo Med

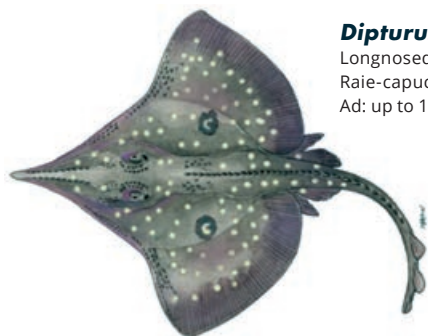


### *Aetomylaeus bovinus* – MPO

Bullray / Aigle Vachette / رَايَة بَقْرَة (البَقْرَة)  
Ad: Disc wide up to 2.2 m



Glo Med



### *Dipturus oxyrinchus* – RJO

Longnosed skate /  
Raie-capucin / قَرِشَلَا  
Ad: up to 1.5 m in total length



Glo Med

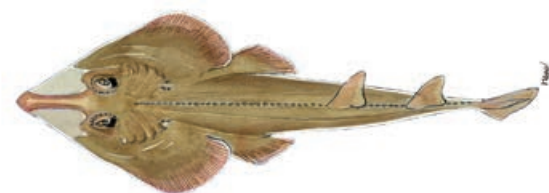


### *Squatina oculata* – SUT

Smoothback angelshark /  
Ange de mer ocellé / (سِفْن / وَقَاص)  
Ad: up to 1.6 m in total length



Glo Med

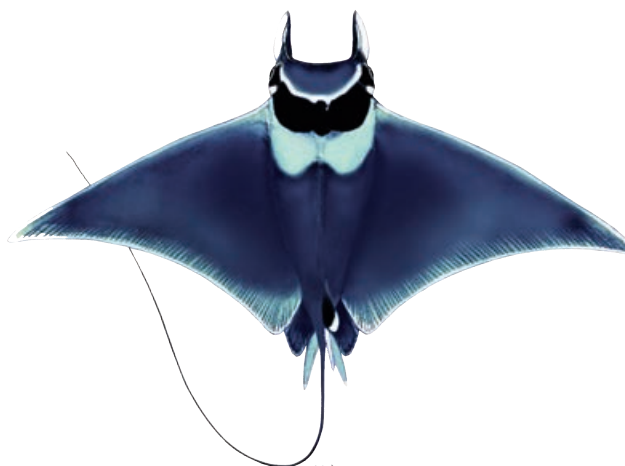


### *Rhinobatos rhinobatos* – RBC

Common guitarfish / Guitar de Mer commune /  
قِيثَارَة شَائِعَة (مِحْرَاث / قِرْس)  
Ad: 1.5 m in total length



Glo Med

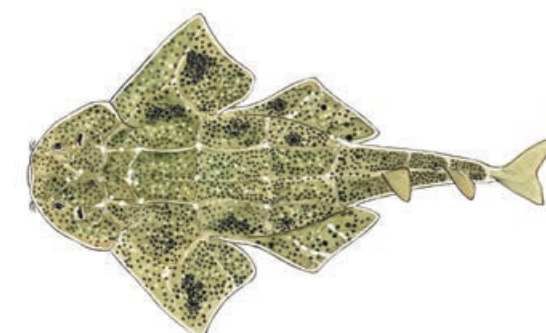


### *Mobula mobular* – RMM

Devil fish / Diable de mer,  
Raie à oreilles / عَيْنُوفِي قِرْنُو  
Ad: Disc wide up to 5.2 m



Glo Med



### *Squatina squatina* – AGN

Angelshark / Ange de mer commun /  
(سِفْن / وَقَاص)  
Ad: up to 2.5 m

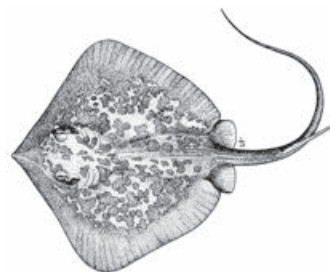


Glo Med

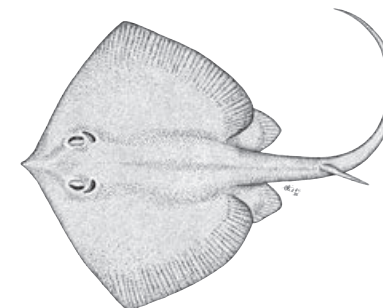
# CHONDRICHTYANS



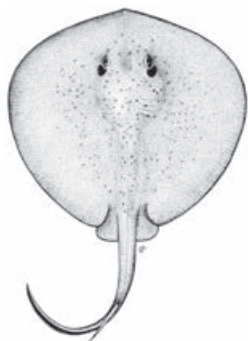
***Dasyatis pastinaca* – JDP** DD VU  
Common stingray / Rina /  
راية لاسعة شائعة (حمام)  
Ad: Disc wide up to 68 cm  
Glo Med



***Dasyatis marmorata* – RDQ** DD DD  
Marble stingray / Pastenague marbrée /  
راية رخامية لاسعة  
Ad: Disc wide up to 60 cm  
Glo Med



***Dasyatis tortonesei* – JDP** DD VU  
Tortonese's stingray / Pastenague  
de Tortonese / (حمام)  
Ad: Disc wide up to 84 cm  
Glo Med



***Taeniurops grabata* – RTB** DD DD  
Round fantail stingray /  
Pastenague africaina /  
(ترش)  
Ad: up to 80 cm in total length  
Glo Med



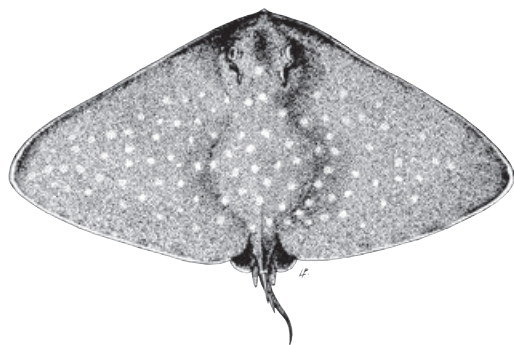
***Raja radula* – JAR** EN EN  
Rough ray / Ange de mer commun /  
راية خشنة (قرشلة)  
Ad: up to 70 cm in total length  
Glo Med



***Raja miraletus* – JAI** LC LC  
Brown ray / Raie miroir /  
راية إم عيون (قرشلة)  
Ad: up to 70cm in total length  
Glo Med



***Raja clavata* – RJC** NT NT  
Thornback ray / Raie bouclée /  
قرشلا او قرداش  
Ad: up to 90-130cm in total length  
Glo Med



***Gymnura altavela* – RGL** VU CR  
Spiny butterfly ray / Raie-papillon  
épineuse / راية الفراشة (حصيرة)  
Ad: Disc wide up to 4 m, common 2 m  
Glo Med



***Myliobatis aquila* – MYL** DD VU  
Common eagle ray /  
Aigle de mer / بقرة  
Ad: Disc wide up to 1.5 m  
Glo Med



***Torpedo torpedo* – TTV** DD LC  
Common torpedo / Torpille ocellée /  
راية حَلْفِيَّة (نعاس)  
Ad: 60 cm in total length  
Glo Med



***Torpedo marmorata* – TTR** DD LC  
Marbled electric ray /  
Torpille marbrée /  
راية مَرْمَرِيَّة (نعاس)  
Ad: up to 1 m in total length  
Glo Med



# SPONGES



## Massive keratose sponges – KERA



*Sarcotragus* sp.



*Sarcotragus* sp.



*Hippospongia communis*



*Ircinia variabilis*

## Globular sponges – GLOS



*Suberites domuncula*



*Tethya aurantium*



*Therea* spp.

## Massive Mediterranean stony sponge – PETR



*Petrosia ficiformis* (burgundy morph)

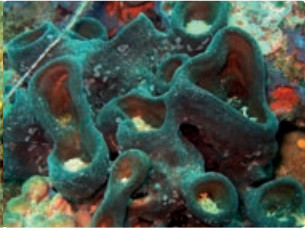


*Petrosia ficiformis* (white morph)

## Lamellate to cup-shaped sponges – LAMS



*Spongia lamella*



*Calyx nicaeensis*

## Arborescent sponges – ARBS



*Axinella* sp.

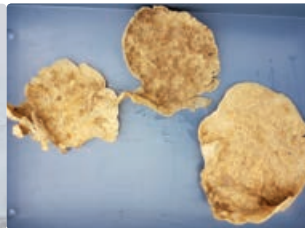


*Axinella cannabina*

## Fan-shaped sponges – FANS



*Phakellia ventilabrum*



*Phakellia robusta*

## Massive, (sub-) spherical hard sponges (*Geodia* spp.) – GEOD



*Geodia cydonium*

## Massive-tubular gold sponges (*Aplysina* spp.) – APLY



*Aplysina* spp.

## Lamellate rock sponges (*Leiodermatium* sp.) – ROCK



*Leiodermatium pfeifferae*

## Other massive sponges (to be recorded as "Other massive") – OTHR



*Agelas oroides*

## Birds' nest glass sponge – BIRD



*Pheronema carpenteri*

## Felt vase glass sponge – FELT



*Asconema setubalense*



**CORALS**

**Soft corals – SOFT**



*Alcyonium palmatum*

**Thick and tall red, yellow fan-shaped gorgonians – FANG**



*Acanthogorgia hirsuta*

*Paramuricea clavata*

VU

**Seapens – PENS**



*Pteroeides spinosum* and *Pennatula* spp.

**Bamboo corals – BAMB**



*Isidella elongata*

CR

**Bright yellow or salmon-pink hard corals (*Dendrophyllia* spp.) – DEND**



Dead *dendrophyllids*

*Dendrophyllia cornigera*

EN

*Dendrophyllia ramea*

VU

**Thin, delicate white, reddish, yellow fan-shaped gorgonians – THIG**



*Paramuricea macrospina*

**Precious red coral – REDC**



*Corallium rubrum*

EN

**Flexible white and salmon-pink fan-shaped gorgonians (*Eunicella* spp.) – EUNI**



*Eunicella cavolini*

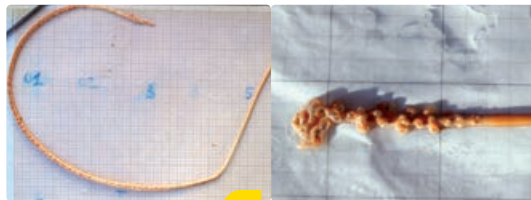
*Eunicella verrucosa*

**Salmon-pink, brittle fan-shaped gorgonians – CALL**



*Callogorgia verticillata*

**White, stem-like sea pens – STEM**



*Funiculina quadrangularis*

*Kophobelemnion stelliferum*

VU

**Candelabrum-shaped, red gorgonians – ELLP**



*Ellisella paraplexauroides*

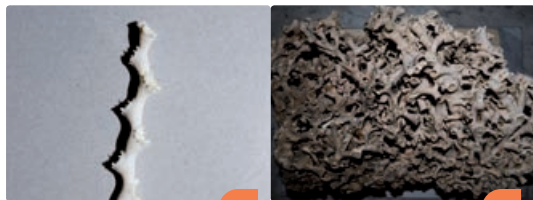
VU

**Tall, white or yellow whip gorgonians (*Viminella flagellum*) – VIMF**



*Viminella flagellum*

**White corals – WHIT**



*Madrepora oculata*

EN

*Lophelia pertusa*

EN

**Colonial hard corals – CLAD**



*Cladocora caespitosa*

EN

**Arborescent black corals – BLAC**



*Antipathella subpinnata*

*Parantipathes larix*

*Leiopathes glaberrima*

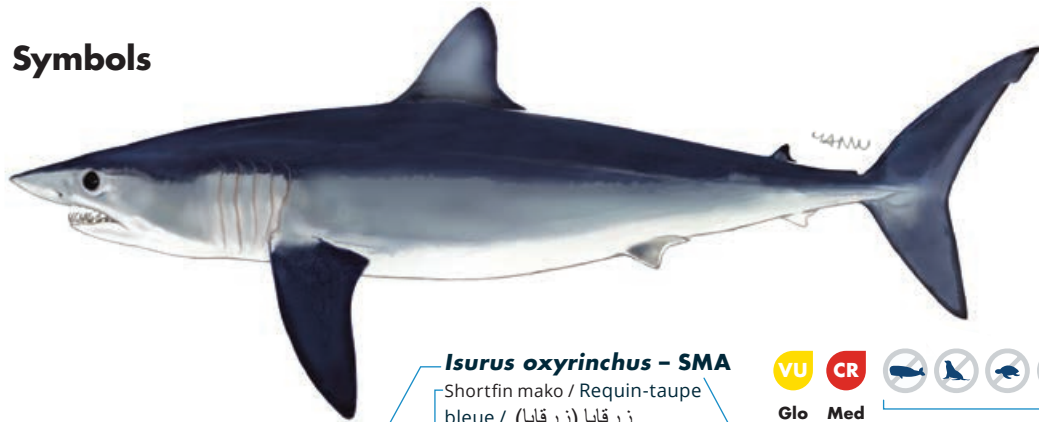
EN

*Antipathes dichotoma*

## Abbreviations

Ad: Adult  
 ♂: Male  
 ♀: Female  
 NB: New Born  
 W: Wingspan

## Symbols



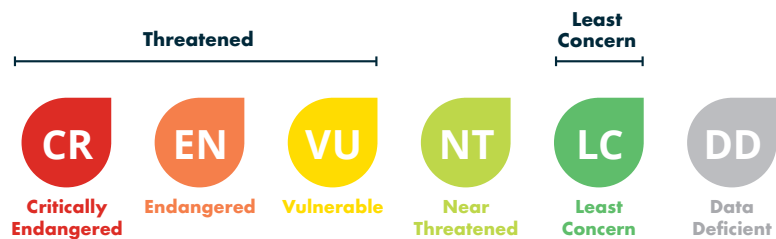
***Isurus oxyrinchus* – SMA**  
 Shortfin mako / Requin-taupe  
 bleue / زرقايا (زرقايا)  
 Ad: up to 4,5m

Scientific name | Common name in English, French and Arab | Species size given as total length or wingspan for Adults (Ad) or Females (♀), Males (♂) and New Born (NB) | Shorthand ASFIS code | IUCN Red Data List status at Global and Mediterranean | The species have to be released alive, it cannot be retained on board, transhipped, landed, transferred, stored, sold or displayed or offered for sale\*

**VU** **CR**  
 Glo Med

## Key to IUCN Red List category symbols

For each species sheets, the IUCN categories relating to the conservation status both globally (Glo) and Mediterranean (Med) level are reported, according to the following scheme:



Geographical subarea (GSA) 12 (Northern Tunisia), 13 (Gulf of Hammamet), 14 (Gulf of Gabes) refer to the Central Mediterranean Sea-North African coasts. If the incidentally caught species is not included in this guide, please refer to the **Identification guide of vulnerable species incidentally caught in Mediterranean fisheries**, which also provides detailed information on the conservation status, regulations and protection of each species (under ACCOBAMS, SPA/BD Protocol, CITES, CMS, GFCM, IUCN).

Illustration source of sharks and rays: FAO Original scientific illustrations archive. Reproduced with permission.

\* GFCM recommendations related to the management and conservation of vulnerable species in the GFCM area of application: seabirds (Rec. GFCM/35/2011/3); sea turtles (Rec. GFCM/35/2011/4); cetaceans (Rec. GFCM/36/2012/2; Res. GFCM/43/2019/2); sharks and rays (Rec. GFCM/36/2012/3; Rec. GFCM/42/2018/2) and corals (Res. GFCM/43/2019/6). National legislation: Annual bylaw relating to the organisation of hunting and bylaw of 28 September 1995 regulating the exercise of fishing by Ministry of Agriculture, Water Resources and Fisheries.



QR Code



# POCKET IDENTIFICATION GUIDE OF MAIN VULNERABLE SPECIES INCIDENTALLY CAUGHT IN TURKISH FISHERIES

Simplified guide adapted for Turkey (GSAs 22 and 24) from the Identification guide of vulnerable species incidentally caught in Mediterranean fisheries



## MARINE MAMMALS



### *Stenella coeruleoalba*

Striped dolphin /  
Çizgili yunus  
Ad: 1.8-2.6 m  
NB: 85-95 cm



Glo Med



### *Grampus griseus*

Risso's dolphin / Grampus  
Ad: 3 - 4 m / NB: 1.2 - 1.5 m



Glo Med



### *Delphinus delphis*

Common dolphin / Tirtak  
♂: 2.0-2.6 m / ♀: 2.4 m /  
NB: 80-90 cm



Glo Med



### *Tursiops truncatus*

Common bottlenose dolphin /  
Afalina  
♂: 2.5 - 3.9 m  
♀: 2.2-3.2  
NB: 1-1.2 m



Glo Med



### *Monachus monachus*

Mediterranean monk seal / Akdeniz foku  
♂: 2,51-2,90m / ♀: 2,42m / NB: 100 cm



Glo Med

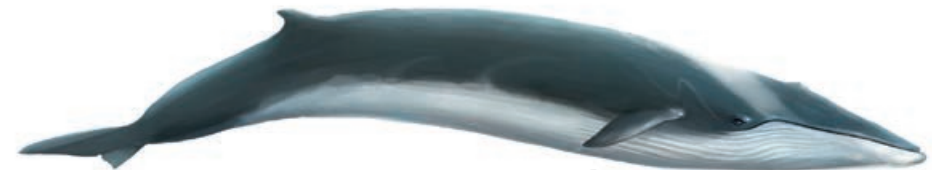


### *Physeter macrocephalus*

Sperm whale / Kaşalot  
♂: 16-18 m / ♀: 11-12 m / NB: 3.3-4.2 m



Glo Med



### *Balaenoptera physalus*

Fin whale / Uzun Balina  
♂: 18-20 m / ♀: 20-22 m / NB: 6-6.5 m



Glo Med



### *Ziphius cavirostris*

Cuvier's beaked whale /  
Gagalı balina  
♂: up to 7.5 m  
♀: up to 7 m  
NB: 2-2.7 m



Glo Med



### *Phocoena phocoena*

Harbour porpoise /  
Mudur  
♂: 1,8 m  
♀: 2 m  
NB: 50-70 cm



Glo



### *Balaenoptera acutorostrata*

Common minke whale /  
Mink Balinası  
♂: 7m / ♀: 7,30 m / NB: 2.4-2.8 m



Glo



### *Steno bredanensis*

Rough-toothed dolphin /  
Kabadışli yunus  
Ad: 2.2 - 2.5 m / NB: 1m



Glo Med



Glo

### *Pseudorca crassidens*

False killer whale / Yalancı katil balina  
Ad: 3,7-5,5 m / NB: 1,8-2,1m



### *Globicephala melas*

Long-finned pilot whale /  
Siyah yunus  
♂: 5.5-6.2 m / ♀: 4.5-5.5 m  
NB: 1.7-1.8 m



Glo Med



### *Mesoplodon densirostris*\*

Blainville's beaked whale / Dişli gagalı balinat  
♂: 4,5m / ♀: 5,2m / NB: 2,1m



Glo

## SEABIRDS



**LC** *Larus michahellis*  
Yellow-legged gull / Gümüş Martı  
**Glo** Wingspan: 120 – 140 cm



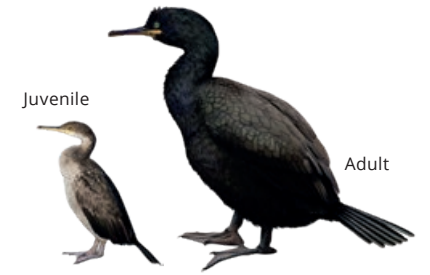
**LC** *Larus melanocephalus*  
Mediterranean gull / Akdeniz martısı  
**Glo** W: 94 – 102 cm



**LC** *Larus audouinii*  
Audouin's gull / Ada martısı  
**Glo** W: 117 – 128 cm



**LC** *Phalacrocorax carbo*  
Great Cormorant / Karabatak  
**Glo** W: 77 – 94 cm



**LC** *Gulosus aristotelis desmarestii*  
European shag / Tepeli karabatak  
**Glo** W: 115 – 125 cm



**LC** *Larus ridibundus*  
Black-headed gull / karabaş martı  
**Glo** W: 86 – 99 cm

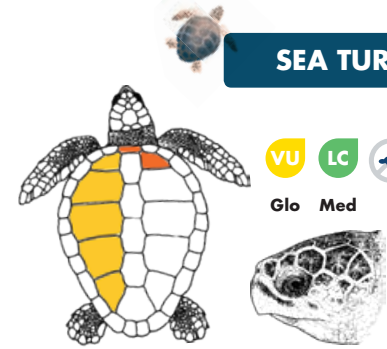


**LC** *Thalasseus sandvicensis*  
Sandwich tern / Karagagalı sumru  
**Glo** W: 85 – 97 cm



**LC** *Sterna hirundo*  
Common Tern / Sumru  
**Glo** W: 70 – 80 cm

## SEA TURTLES



**VU** **LC**  
**Glo** **Med**  
*Caretta caretta*  
Loggerhead turtle / Sini Kaplumbağası  
♂: 75-80 cm; ♀: 66-85 cm



**EN**  
**Glo**  
*Chelonia mydas*  
Green turtle / Yeşil kaplumbağa  
Ad (♂ and ♀): 80-120 cm



**VU** *Puffinus yelkouan*  
Yelkouan shearwater / Yelkovan  
**Glo** W: 70 – 84 cm



**LC** *Calonectris diomedea*  
Scopoli's shearwater / Boz yelkovan  
**Glo** W: 112 – 122 cm



**LC** *Hydrobates pelagicus*  
European storm petrel / Firtina kırlangıcı  
**Glo** W: 37 – 41 cm



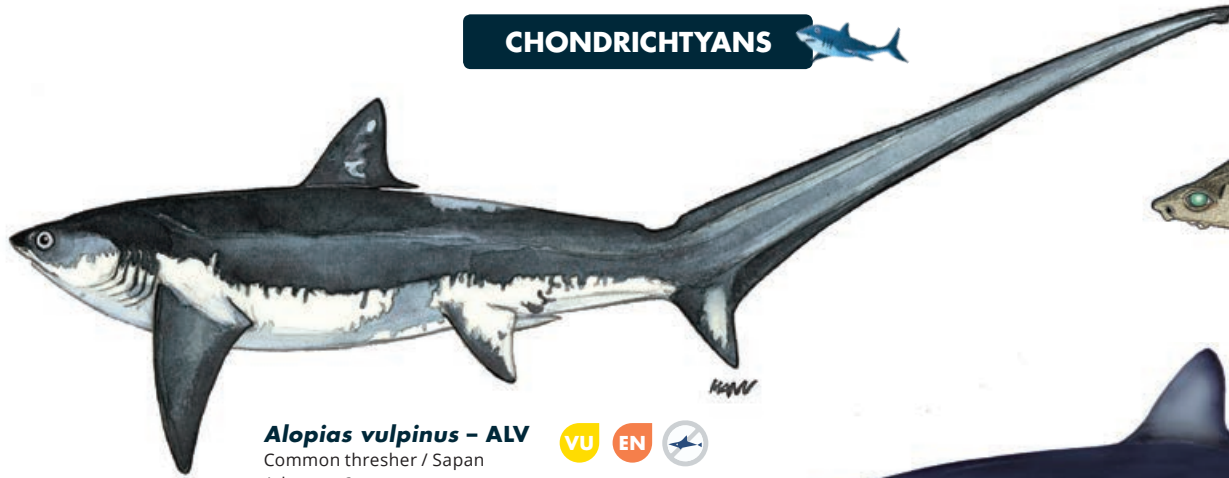
**VU**  
**Glo**  
*Dermochelys coriacea*  
Leatherback sea turtle /  
Deri sırtlı deniz kaplumbağası  
Average adult length 1.4-1.6 m



**VU** **CR**  
**Glo** **Med**  
*Trionyx triunguis*  
African softshell turtle /  
Nil kaplumbağası  
Ad: 50-95 cm



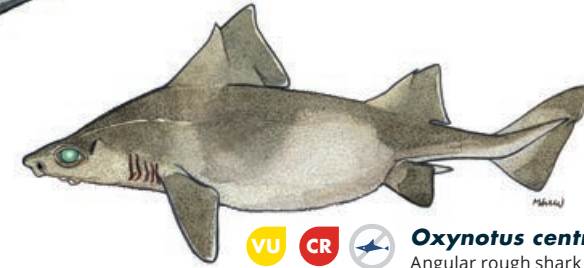
## CHONDRICHTYANS



**Alopias vulpinus - ALV**  
Common thresher / Sapan  
Ad: up to 6 m

VU EN

Glo Med



VU CR

Glo Med

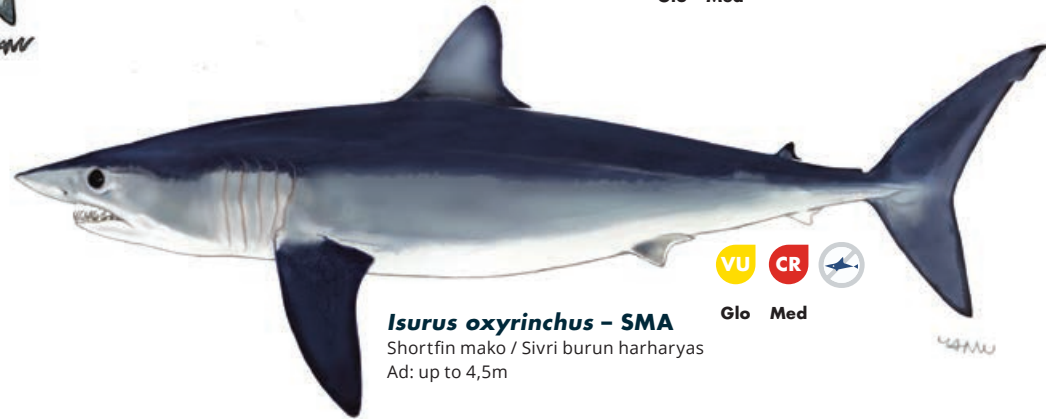
**Oxynotus centrina - OXY**  
Angular rough shark / Domuz Balığı  
Ad: up to 1,5 m



**Centrophorus cf uyato - GUP**  
Gulper shark / Yutucu köpekbalığı  
Ad: up to 1,2 m

DD CR

Glo Med



**Isurus oxyrinchus - SMA**  
Shortfin mako / Sivri burun harharyas  
Ad: up to 4,5m

VU CR

Glo Med



**Galeorhinus galeus - GAG**  
Tope shark / Camgöz balığı  
Ad: up to 1,6m

VU VU

Glo Med



**Rhinobatos rhinobatos - RBC**  
Common guitarfish / Uzun Kemane  
Ad: up to 1,5m

EN EN

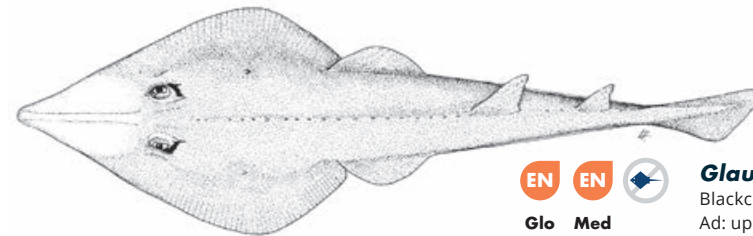
Glo Med



**Hepttranchias perlo - HXT**  
Sharpnose sevengill shark /  
Yedi yarıklı boz camgöz  
Ad: up to 1,4m

NT DD

Glo Med



EN EN

Glo Med

**Glaucostegus cemiculus - RBC**  
Blackchin guitarfish / Kemane  
Ad: up to 2,42m

## CHONDRICHTYANS



### *Leucoraja fullonica* - RJF

Shagreen skate /  
Telatin vatoz  
Ad: up to 1,2m



Glo Med



### *Leucoraja naevus* - RJN

Cuckoo skate / Benli vatoz  
Ad: up to 0,81m



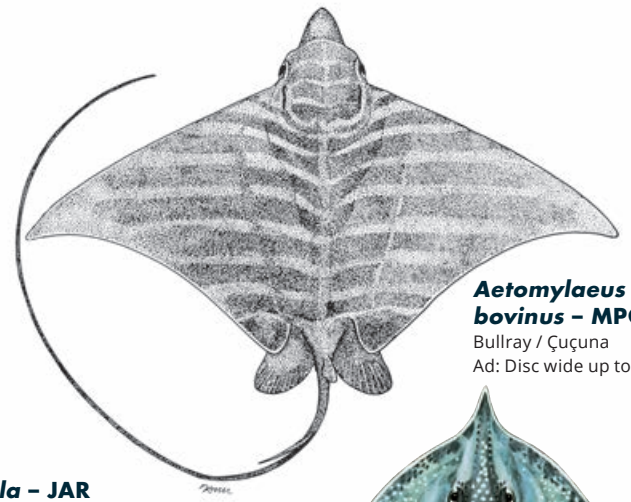
Glo Med



Glo Med

### *Raja radula* - JAR

Rough skate / Pürüzlü vatoz  
Ad: up to 0,7m



### *Aetomylaeus bovinus* - MPO

Bullray / Çuçuna  
Ad: Disc wide up to 2,2m



Glo Med

### *Raja polystigma* - RJM

Speckled skate / Benekli Vatoz  
Ad: up to 0,7m



Glo Med

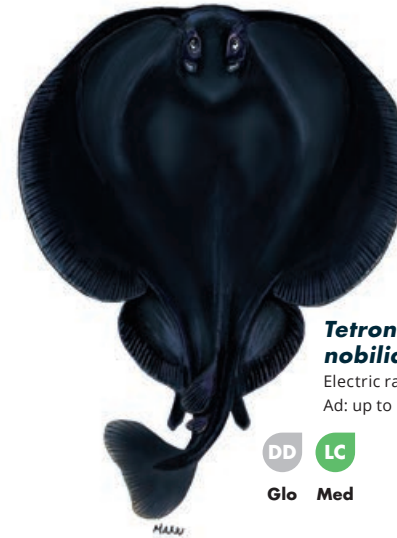


### *Dasyatis pastinaca* - JDP

Common stingray / Rina  
Ad: Disc wide up to 0,68m



Glo Med



### *Tetronarce nobiliana* - TTO

Electric ray / Çarpan  
Ad: up to 1,8m



Glo Med



### *Rostroraja alba* - RJA

White skate /  
Beyaz Vatoz  
Ad: up to 2,4m



Glo Med

### *Raja undulata* - RJU

Undulate skate /  
Boyalı Vatoz  
Ad: up to 1,14m



Glo Med

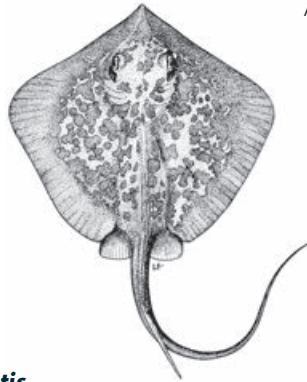


### *Dasyatis marmorata* - RDQ

Marbled stingray /  
Benekli rina  
Ad: Disc wide up to 60cm



Glo Med

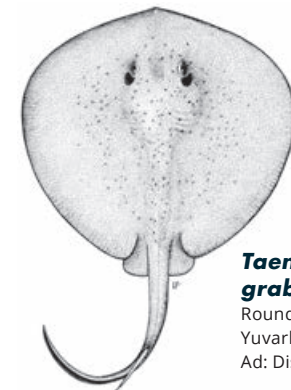
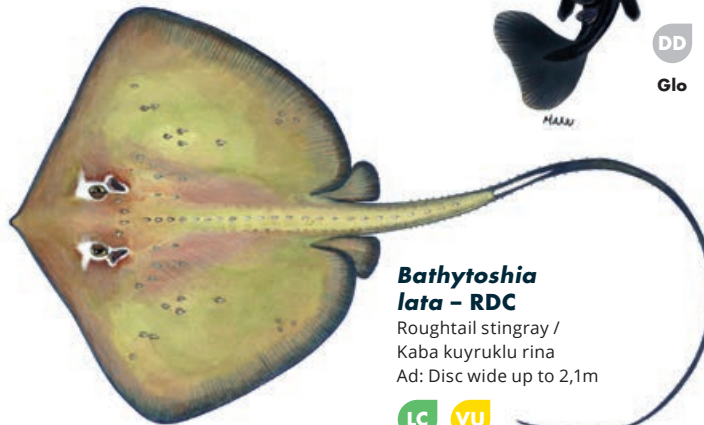


### *Bathytoshia lata* - RDC

Roughtail stingray /  
Kaba kuyruklu rina  
Ad: Disc wide up to 2,1m



Glo Med



### *Taeniurus grabatus* - RTB

Round stingray /  
Yuvarlak Rina  
Ad: Disc wide up to 0,8m



Glo Med



# SPONGES



## Massive keratose sponges – KERA



*Sarcotragus* sp.



*Sarcotragus* sp.



*Hippospongia communis*



*Ircinia variabilis*

## Globular sponges – GLOS



*Suberites domuncula*



*Tethya aurantium*



*Therea* spp.

## Massive Mediterranean stony sponge – PETR



*Petrosia ficiformis* (burgundy morph)



*Petrosia ficiformis* (white morph)

## Lamellate to cup-shaped sponges – LAMS



*Spongia lamella*



*Calyx nicaeensis*

## Arborescent sponges – ARBS



*Axinella* sp.

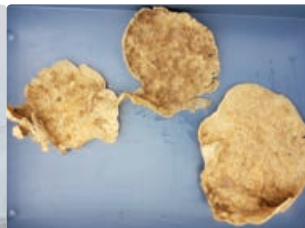


*Axinella cannabina*

## Fan-shaped sponges – FANS



*Phakellia ventilabrum*



*Phakellia robusta*

## Massive, (sub-) spherical hard sponges (*Geodia* spp.) – GEOD



*Geodia cydonium*

## Massive-tubular gold sponges (*Aplysina* spp.) – APLY



*Aplysina* spp.

## Lamellate rock sponges (*Leiodermatium* sp.) – ROCK



*Leiodermatium pfeifferae*

## Other massive sponges (to be recorded as "Other massive") – OTHR



*Agelas oroides*

## Birds' nest glass sponge – BIRD



*Pheronema carpenteri*

## Felt vase glass sponge – FELT



*Asconema setubalense*



**CORALS**

**Soft corals – SOFT**



*Alcyonium palmatum*

**Thick and tall red, yellow fan-shaped gorgonians – FANG**



*Acanthogorgia hirsuta*

*Paramuricea clavata*

VU

**Seapens – PENS**



*Pteroeides spinosum* and *Pennatula* spp.

**Bamboo corals – BAMB**



*Isidella elongata*

CR

**Bright yellow or salmon-pink hard corals (Dendrophyllia spp.) – DEND**



Dead *dendrophyllids*

*Dendrophyllia cornigera*

EN

*Dendrophyllia ramea*

VU

**Thin, delicate white, reddish, yellow fan-shaped gorgonians – THIG**



*Paramuricea macrospina*

**Precious red coral – REDC**



*Corallium rubrum*

EN

**Flexible white and salmon-pink fan-shaped gorgonians (Eunicella spp.) – EUNI**



*Eunicella cavolini*

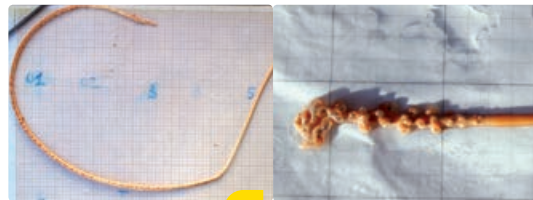
*Eunicella verrucosa*

**Salmon-pink, brittle fan-shaped gorgonians – CALL**



*Callogorgia verticillata*

**White, stem-like sea pens – STEM**

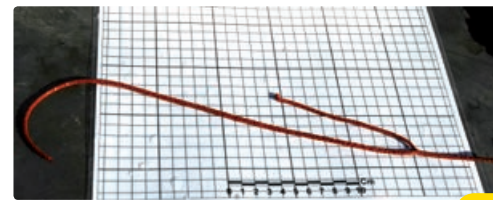


*Funiculina quadrangularis*

*Kophobelemnion stelliferum*

VU

**Candelabrum-shaped, red gorgonians – ELLP**



*Ellisella paraplexauroides*

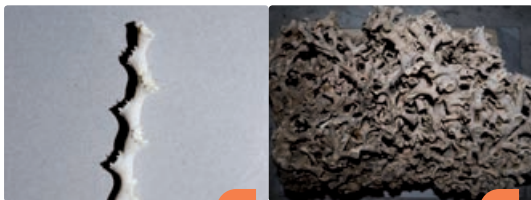
VU

**Tall, white or yellow whip gorgonians (Viminella flagellum) – VIMF**



*Viminella flagellum*

**White corals – WHIT**



*Madrepora oculata*

EN

*Lophelia pertusa*

EN

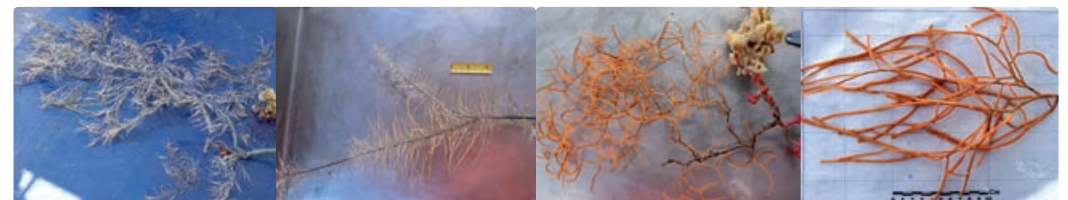
**Colonial hard corals – CLAD**



*Cladocora caespitosa*

EN

**Arborescent black corals – BLAC**



*Antipathella subpinnata*

*Parantipathes larix*

*Leiopathes glaberrima*

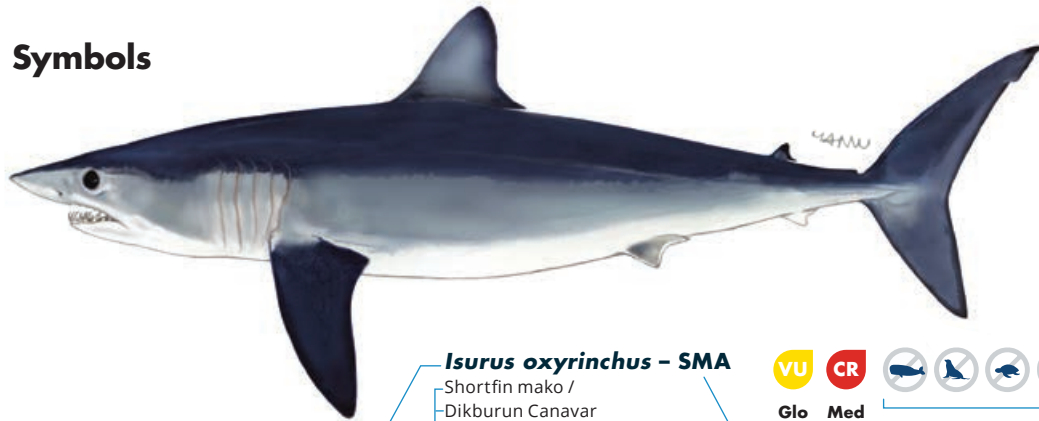
EN

*Antipathes dichotoma*

## Abbreviations

Ad: Adult  
 ♂: Male  
 ♀: Female  
 NB: New Born  
 W: Wingspan

## Symbols



***Isurus oxyrinchus* – SMA**  
 Shortfin mako /  
 Dikburun Canavar  
 Ad: up to 4,5m

Scientific name

Common name in English and Turkish

Species size given as total length or wingspan for Adults (Ad) or Females (♀), Males (♂) and New Born (NB)

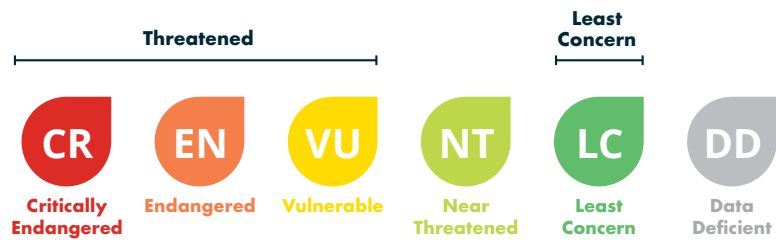
Shorthand ASFIS code  
**VU CR**  
 Glo Med

IUCN Red Data List status at Global and Mediterranean

The species have to be released alive, it cannot be retained on board, transhipped, landed, transferred, stored, sold or displayed or offered for sale\*

## Key to IUCN Red List category symbols

For each species sheets, the IUCN categories relating to the conservation status both globally (Glo) and Mediterranean (Med) level are reported, according to the following scheme:



Geographical subarea (GSA) 22 refers to the Aegean Sea and GSA 24 to the Northern Levant Sea. If the incidentally caught species is not included in this guide, please refer to the **Identification guide of vulnerable species incidentally caught in Mediterranean fisheries**, which also provides detailed information on the conservation status, regulations and protection of each species (under ACCOBAMS, SPA/BD Protocol, CITES, CMS, GFCM, IUCN).  
 Illustration source of sharks and rays: FAO Original scientific illustrations archive. Reproduced with permission.

\* GFCM recommendations related to the management and conservation of vulnerable species in the GFCM area of application: seabirds (Rec. GFCM/35/2011/3); sea turtles (Rec. GFCM/35/2011/4); cetaceans (Rec. GFCM/36/2012/2; Res. GFCM/43/2019/2); sharks and rays (Rec. GFCM/36/2012/3; Rec. GFCM/42/2018/2) and corals (Res. GFCM/43/2019/6).  
 Central Hunting Commission of Turkey 2019-2020 Resolutions



QR Code